

FREE

2025 Champlain Valley






JESSICA'S
— AT —
SWIFT HOUSE INN

"One of the best dining experiences in Vermont"
- Shawn on OpenTable

25 STEWART LANE, MIDDLEBURY VT 05753
802-388-9925 @SWIFTHOUSEINN







Proudly celebrating 51 years!

www.middleburyfarmersmarket.org
every Saturday...year round • 9am - 12:30pm
ORGANIC MEATS AND PRODUCE / HOT PREPARED FOOD / ARTISAN GOODS!



VERMONT MADE
DESIGNED & ASSEMBLED

Soak up the sun
with Vermont's most efficient solar solution.

GET STARTED



Contact us to find out what solar solution is right for you.

Scan the QR code using your phone's camera or call (802) 872-9600 to schedule a free consultation with one of our knowledgeable energy advisors.

FOR MORE DETAILS, VISIT WWW.ALLEARTHRENEWABLES.COM







FOUR BLOOMS FARM
fresh cut flowers
LOCALLY GROWN IN BRISTOL, VT

Four Blooms Farm
Bristol, Vermont

www.fourblossomsfarm.com
sarah@fourblossomsfarm.com
Instagram - @fourblossomsfarmvt



Welcome!

In this wildly dynamic time, it feels appropriate to revisit history and drop in a few clichéd quotes. I hope you'll forgive me.

"You never change things by fighting the existing reality. To change something, build a new model that makes the existing model obsolete." — Buckminster Fuller

I've lost count of how many times I've used this quote in a grant application for the ACORN Food Hub, and yet, it feels timeless and worth repeating each time. The systems theorist, writer, inventor, philosopher, and futurist understood, over 40 years ago, that rather than resisting, our energy might be better spent in creating. That's where I prefer to be, too.

With increasing frequency, from the COVID shutdown to the consecutive summer floods to our current... situation (Is it a constitutional crisis? A glitch in the matrix?), both friends and strangers have vocalized how much they appreciate the work ACORN is doing. By that, they mean the relocating of our food system, the supporting of our farmers, the knitting together of community. Many of us have exited the cult of individualism as we've realized how good, and how powerful, it feels to build something together. And, to quote author Robin Wall Kimmerer, we are beginning to "question the values that underpin our current exploitative relation to the living world. Why do we tolerate an economy that actively destroys what we love?"

Gandhi is often attributed with saying, "be the change you wish to see in the world," although it turns out he may not have said that in those exact words. Instead, this quote sums up his emphasis on the importance of personal transformation as a catalyst for broader societal change. That to effect positive change in the world, individuals must first change themselves.

So, as things continue to change around us, and we know that change is our only constant, how do we steward this change? Individually within ourselves, and collectively, for the common good? How do we dig in to find the inner resilience, courage and joy to keep our internal fires lit, as well as those of our families, friends and neighbors?

The articles in the following pages show us a few ways: through getting your hands in the soil while volunteering at working bees,



LINDSEY BERK

through consistently researching more ecologically beneficial ways of growing food, and supporting farms that are engaging in those practices. Through finding home wherever you are in the world, through assessing the language we use to describe the world, and revisiting perspectives that we may have grown out of. Through supporting organizations such as Addison Allies and Migrant Justice who are supporting marginalized farmworkers who are also our neighbors. Through being in community.

We invite you to use this Guide — **our 15th edition!** — as a resource to build the world you want to see. Connect with some of the 250 innovative, dedicated and resilient producers and farmers in the Champlain Valley who are recreating our food system one row, high tunnel, hive, tree and field at a time.

Yours in Community,
Lindsey Berk, Executive Director, ACORN

Project Contributors:

Project Editor: Lindsey Berk

Contributing Writers: Alicia Hughart, Emily Landenberger, Jess Purks, Susan Smiley, Aisha Thapaliya, Addison Independent staff

Directory: Lilah Krugman, Alyssa Greaney, Carina Huang, Emily Murphy

Ad Sales: Jonathan Corcoran

The Cover:

Art & Design: Julia Berberan

Table of Contents

All About Acorn	4-5
Cover Crops & Tillage.....	7-9
Work Brigades.....	10-11
Grains of Home.....	13-15
Directory of Local Food and Farms.....	17-35, 38-57
Farm Map and Key.....	36-37
Food Hub & Acorn 2025 Update.....	59-61
Perennials	62-64
Addison County Farmacy.....	65
Farmers' Markets, Community Meals & Food Shelves	66-68
Index of Food Products	70



LEARN MORE ABOUT ALL OF OUR PROGRAMS: WWW.ACORNVT.ORG



ACORN

HOW TO USE THIS GUIDE:

Sample Directory Pages



Map



Index



- The Directory is organized alphabetically by town, with **farms listed alphabetically** within each town.
- A **map** in the centerfold illustrated where the farms are located. The numbers next to the farm indicate their listing number within the Directory, *not* their page number.
- If you're looking for a specific product, check our Index on Page 70.
- A searchable, digital version of the map and directory can be found at www.acornvt.org/map

TOUR DE FARMS

ACORN'S LARGEST FUNDRAISER

SATURDAY,
SEPTEMBER 20, 2025

IN MIDDLEBURY

FOR THE FIRST TIME EVER!



REGISTER
EARLY
& SAVE

JOIN OUR ONLINE MARKET

BULK + WHOLESALE LOCAL FOOD



PLUS SERVICES FOR FARMERS
AND FOOD PRODUCERS:



STORAGE
DRY, COLD, & FROZEN

CROSS-DOCKING

FREIGHT DROP

LOCAL DELIVERY

TRANSPORT

616 EXCHANGE STREET, MIDDLEBURY

LEARN MORE ABOUT ALL OF OUR PROGRAMS: WWW.ACORNVT.ORG



P.O. Box 404, Bristol, VT 05443 | (802) 382-0401 | www.acornvt.org | info@acornvt.org

We are a community non-profit governed by a volunteer board whose mission is to promote the growth and health of local food and agriculture in Vermont's Champlain Valley.

Food and Farms



The **Champlain Valley Guide to Local Food and Farms** provides comprehensive information about our region's farms and serves as a year-round resource for buying local.



The **Tour de Farms**, the Champlain Valley's annual cycling and sampling tour of local farms, raises awareness of our county's bounty and promotes safe, sustainable transportation.



The Farmer Climate Network

This network of farmers and community members collaborate to mitigate the risks and adapt to the opportunities that a changing climate presents.

Food Economy



A **Food Hub** that drives local food for the whole community. This space in Middlebury hosts the aggregation, storage and distribution of local food. We're increasing access to markets for producers and increasing access to local food for everyone.



ACORN's **online market** streamlines wholesale and bulk purchasing on an e-commerce platform. The market aggregates products from multiple local farms onto one invoice, making it easier to purchase local food. "A local foods Costco."



ACORN is a member of multiple **statewide groups and communities of practice** to ensure we remain connected with our colleagues in the regional foodshed and continue to identify new opportunities for growers and food producers in the Champlain Valley.

Community + Culture



We publish a monthly e-newsletter, **Cultivating Connections**, to inform our community about farm and food-related news. Sign up for the newsletter at www.ACORNVT.org. To submit content, email info@acornvt.org.



The **Farmacy Food is Medicine** program connects families facing food insecurity and/or diet-related illness with free local farm shares (CSA) of organic fruits and veggies, supplemented with nutrition & cooking information.



ACORN is a nimble network, a catalyst for developing local, sustainable and collaborative solutions that adapt to current times. **Please get in touch** if you'd like to work with us in the future.

Our Board + Staff

Neily Jennings

Board Chair
neily.jennings@gmail.com

Jessica Freed-Haitz

Vice Chair
jessfh4@gmail.com

Kristin Blodgett

Treasurer
krlodgett@gmail.com

Emily Landenberger

Secretary
emily@nofavt.org

Jonathan Corcoran

jcorcoran@acornvt.org

Harley Fjeld

fjeld.harley@gmail.com

Sarah Kaeck

sarahpkaeck@gmail.com

Susan Smiley

susan.smiley46@gmail.com

Aisha Thapaliya

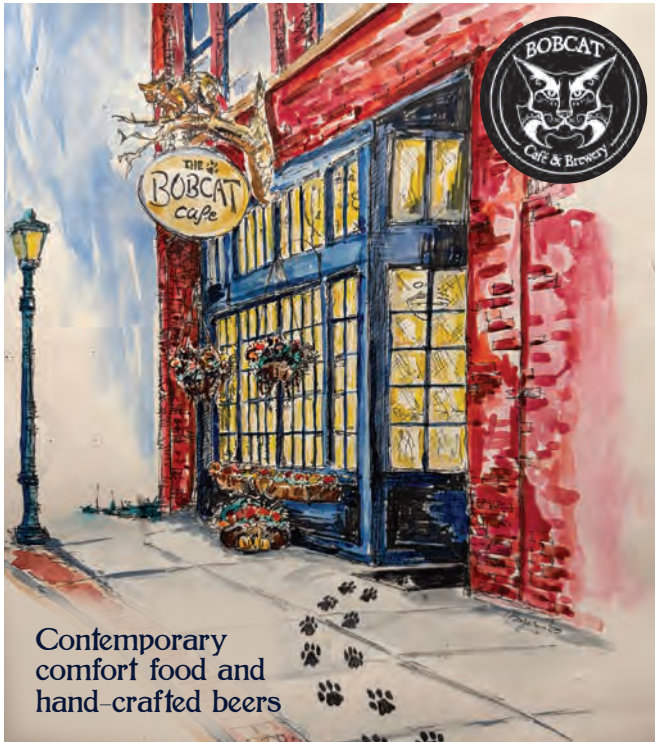
athapaliya@middlebury.edu

Lindsey Berk - Executive Director
lindsey@acornvt.org

Alyssa Greaney - Programs + Outreach
alyssa@acornvt.org

Abby Kelso - Food Hub
market@acornvt.org

Jessica Purks - Food Hub
jessica@acornvt.org



Contemporary
comfort food and
hand-crafted beers

Wednesday – Sunday, 4pm – 8pm
5 Main Street | Bristol, Vermont 05443
802-453-3311 | TheBobcatCafe.com



Vermont Farmers
Food Center

ONLINE FARMERS MARKET



Increased markets for local food

Distribution possibilities in
Rutland County, opportunities for
cross docking, transport, and more!

For more information OR to learn more, contact us
at localfood@vermontfarmersfoodcenter.org
vermontfarmersfoodcenter.org



“No national agricultural
policy for survival under
high standards of living
can come forth unless
we finally realize that
our national strength lies
in the fertility of our soil
and our future survival
in the wise management
and utmost
conservation of it.”

-William Albrecht



www.rockdustlocal.com
802-758-2220



Local farms turn to cover crops to boost soil health

BY SUSAN SMILEY, ACORN BOARD MEMBER

Spring comes to the Champlain Valley and beautiful green fields abound. Rye grass seeded as a cover crop in the fall forms a lush carpet on fields that grew corn and other crops the summer before. As spring progresses, the green grass will yellow, lose all color, and turn a pale brown. The grass is prematurely dead, having been terminated by an herbicide spray. Farm implements called no till planters will soon come to these fields to seed a new crop of corn directly into the debris left on the ground.

The scene described above, however, is not universal; there are Champlain Valley farms growing cover crops, but using other methods and strategies to follow the cover crop with summer-planted corn, soybeans and hay mixes.

The Vander Weys saw a drop in productivity in their crops when they first undertook these practices, but yield then began to climb as the bacterial life of the soil increased.

Nea-Tocht Farm in Ferrisburgh has been a dairy farm since 1976. Howie and Sid Vander Wey are the second generation running the farm. With 335 milking cows and 300 young stock, they are stewarding 950

acres. Their field practices focus on soil health and cattle health. Spring field work can start with an established hay crop and manure being tilled into the soil. Corn planting will follow. Alternatively, a fall cover crop mix that survives winter will be tilled in the spring and a crop of corn or sorghum will follow. This cover crop mixture is planted again mid-summer, allowing what grows to be cut and baled for feeding the cows in the fall.



Howie Vander Wey holds a tillage radish, part of their cover crop mixture at Nea-Tocht Farm in Ferrisburgh.

The mixed seeding over cover crop seeds which include rye, vetch, clovers and tillage radishes will live on, holding the soil through fall and winter. While corn is an essential part of a dairy cow ration, providing energy for milk production, Howie and Sid are planting sorghum to contribute to the cows' diets. Sorghum is planted much more densely than corn, leaving much less open ground where weeds can take hold. Sorghum also has a wider seeding range, from spring to mid-summer.

The Vander Weys saw a drop in productivity in their crops when they first undertook these practices, but yield then

(See Cover Crop, page 8)



Aqua ViTea.

**BETTER FOR YOU BEVERAGES
CRAFTED IN THE HEART OF VERMONT**

Aqua ViTea is committed to health, community, and sustainability. Our aim is to promote well-being, support our local community, and preserve the planet for a brighter future.

153 POND LANE, MIDDLEBURY, VT 05753 | WWW.AQUAVITEA.COM



To learn more
visit us



Cover Crop continued from page 7

began to climb as the bacterial life of the soil increased. The cost of cover cropping is insignificant when compared with the improvements in soil quality, food quality and milk production. Weeds do grow in their fields of corn, but not enough to affect the crop. While the brothers have been using cover crops for 10-15 years, they have been integrating cover crops into their feeding system for six years.

Wheat is the key to cover crop followed by row crop effectiveness at **Elysian Fields Dairy** in Shoreham. Joe and Kathleen Hescocock are wheat growers, selling their hard red winter wheat to Red Hen Bakery and Naga Bakehouse. Wheat is also used as a cover crop on this organic dairy farm. Planting wheat in the fall and tilling it into the soil in the spring creates a field size seed bed that will produce few weeds to compete with the corn growing throughout the summer. The roots of the wheat plants create a chemical interaction between plants where one plant releases chemicals (allelochemicals) that can inhibit the growth of weeds in the wheat and the following crop.

At **Rolling Bale Farm**, in Shoreham, Ben and Hilary Haigh grow between 10 and 20 acres of cover crops a year. The farm supports beef, poultry and lamb. The sheep are the key to cover crop followed by row crop/field crop effectiveness. Oats and field peas are planted in the spring and sheep are set to graze down the planting end of summer. This approach to preparing



Rows of mature corn that were undersown with cover crop. Planting was done shortly after the corn had started growing. The cover crop seeds were broadcast on top of the soil at Nea Tocht Farm.

the field for a succeeding planting is particularly effective because the sheep crop closely and their manure is evenly distributed through grazing the whole field.

Harrison's Homegrown Dairy, operated by Patrick and Melanie Harrison in Addison, doesn't grow row crops, corn, sorghum or soybeans for their milkers. They break up sod fields for reseeding and graze or harvest the hay in the field for stored feed

(See Cover Crop, page 9)





Basin Harbor
RESORT & BOAT CLUB

Basin Harbor is Lake Champlain's ultimate lakeside dining destination. From fine dining to comfort food, fresh local ingredients, and chef-inspired creations.

basinharbor.com/dining



VBS

Vermont Book Shop Middlebury, VT

www.vermontbookshop.com

We live **HERE**. We hire **HERE**.
We pay taxes **HERE**.
We give **HERE**.

WE ARE LOCAL

SEVENTY FIVE YEARS OF COMMUNITY BOOKSELLING, AND COUNTING



The remnants of the Sudan grass at the field's edge.

Cover Crop continued from page 8

before using minimal tillage to prepare the field for a new seeding.

Adirondack Hay and Grains lies in Essex, NY, part of the breadbasket of the Champlain Valley. Mark Wisley and his sons, Derrick and Clayton, grow certified organic corn, sunflowers, wheat, rye, soybeans and barley. They are new to cover cropping and are experimenting mightily: starting with a fallow field,

starting with sod, following rye with frost seeded red clover, mixing vetch with rye to get a nitrogen boost and weed smothering prior to corn planting, seeding rye with a grain drill or broadcasting. Which is better for weed suppression? Planting rye at the rate of 300#/acres!

A mix of ingenuity, diverse farming systems that support soil health at every turn, and new developments in farm equipment offers inspiration for a future without herbicides dimming the lush spring greening of the Champlain Valley.

Proudly Serving Addison County FARMERS FOR OVER 5 DECADES!

"Family owned and operated"

Weekly Mon. - Thurs. Livestock Auctions

Trucking rates available

Certified Organic Auction Market

Specializing in dairy replacement & herd dispersals

ADDISON COUNTY COMMISSION SALES

Sales Manager/Owner: T. G. Wisnowski

802-388-2661

Rt. 125, East Middlebury, VT • www.accscattle.com

The hills are calling!



High Rows Vineyards is offering tastings of our wines and bottle sales at the winery.

Check our website or Instagram account for our tasting hours

388 Lincoln Road Ripton, Vermont | highrowsvineyards@gmail.com



A crew of helpers transplant flowers at Stone's Throw Farmstead in 2024.

Cultivating Community:

The Roots of Agroecological Work Brigades

BY EMILY LANDENBERGER, ACORN BOARD MEMBER

As the old farming parable goes, “A farm flourishes not by the strength of one, but by the hands of many—each seed sown lighter, each harvest gathered faster.” This spirit captures the essence of agroecological work brigades, known by many names across cultures: *Brigada* in Puerto Rico, *Minca* among Indigenous communities in the Andes, *Meitheal* in Ireland, *labor exchange* or *LAX* within the Federation of Egalitarian Communities, or simply *working bees* in other circles. While they go by many names and their rich history transcends many cultures, at their heart, work brigades are a traditional educational tool used for strengthening communities outside of a capitalist framework by building trust and solidarity through collective labor, connection, mutual aid,

and knowledge-sharing.

Growing up in Southeast Alabama, my family often pitched in on a black-owned farm led by a legendary farmer in my community named Douglas ‘Bubba’ Walker. Our tasks ranged from the routine—harvesting mountains of okra and field peas at their peak, preserving sticky-sweet peaches in a seamless canning assembly line of skilled hands, or helping with the annual hog butchering—to the unexpected, like rounding up pigs when they managed to wiggle free from their pastures.

Though we never called it a ‘work brigade,’ I’m confident these gatherings still ticked all the same solidarity-signaling, community-building boxes. As we labored together, we participated in a cultural exchange where complex social networks formed, and vital agrarian knowledge was shared—though to my young ears, it often sounded more like town gossip or commiseration over the latest pest threatening the collard greens. I didn’t grasp the broader significance at the time, but looking back, I see that we were participating in a deeply rooted tradition with a particularly rich history among Black-owned farms in the Southeast.

This realization came into sharp focus in July of 2022 when several of us from Team ACORN were invited to attend the *Each*

(See Brigades, page 11)



Brigades continued from page 10

One Teach One Agroecology Encounter at the Center for Grassroots Organizing in Marshfield, Vermont. Hosted by Rural Vermont and La Via Campesina, this transformative gathering provided a rich space for multicultural, multi-generational exchange. Farmers, farmworkers, seed keepers, and herbalists from Nicaragua, Chile, Mexico, Canada, and across the U.S. came together to explore food, land, and health sovereignty—sharing knowledge, experiences, and solidarity.

As part of that weekend's programming, we attended a presentation by Tammy Harris of the Southeastern African American Farmers' Organic Network (SAAFON). She shared SAAFON's mission to amplify the collective power, prosperity, and visibility of Black farmers in the American South who are committed to ecologically sustainable practices.

Harris emphasized that for Black farmers, sustainable agriculture is about far more than technical practices—it is rooted in a legacy worldview that defines success beyond productivity and profit. Due to their long history of disenfranchisement, Black farmers have cultivated what political economist Dr. Jessica Gordon Nembhard, in her book *Collective Courage*, describes as “a long and strong history of African American economic cooperation.” Their commitment to farming extends beyond the land itself, serving as a means of connecting personal, familial, cultural, and ancestral agrarian legacies. One powerful expression of this ethos is the tradition of collective work brigades.

At the Encounter, we also learned from Nils McCune, former North America regional secretariat staff member of La Via Campesina and current research associate at the University of Vermont Institute for Agroecology, about the agroecological work brigade methodology developed by Organización Boricuá from Puerto Rico. McCune explores the power of agroecological work brigades through the Boricuá framework in his booklet for the People's Agroecology School of Vermont.

In this publication, McCune highlights the dual nature of farm labor—historically used as a tool of control yet also holding the potential to be a liberating force within a Just Transition. He describes work brigades as a way to mobilize people outside the



A Working Bee crew poses together at Singing Cedars Farmstead in March 2024.

constraints of a capitalist framework, uniting neighbors, friends, comrades, family, and allies in transformative, context-specific action. These brigades blend cultural expression, camaraderie, and social interaction while also serving as a vehicle for movement-building. Through shared labor, participants not only work together but also learn together, strengthening the fabric of their relationships—a currency arguably more valuable than money.

Deeply inspired by what we had learned at the Each One Teach One encounter, ACORN's Executive Director, Lindsey Berk, proposed an idea to host a series of working bees on farms in Vermont's Champlain Valley. Our first series began in 2024 and included the following:

- Threshing, filtering, and bagging dried soybeans at Boundbrook Farm in February
- Tomato transplanting and trellising at Singing Cedars Farmstead in March
- Onion transplanting at New Leaf Organics in April

(See Brigades, page 12)

Come Visit Our Greenhouses!

Addison County's Premier Organic Farm

- Organic Vegetable & Herb Plants
- Annuals, Perennials & Hanging Baskets
- Organic Fertilizer, Compost & Potting Mix
- Garden Seeds, Onion Sets, Seed Potatoes
- Decorative Pottery & Supplies



For current hours visit
[GoldenRussetFarm.com](https://www.GoldenRussetFarm.com)



**Certified Organic
Vegetables and
Cut Flowers.**

1329 Lapham Bay Road
Shoreham, VT
802-897-7031





Brigades continued from page 11

- Prepping soil in a brand-new high tunnel at Frog Hollow Farmstead in May
- Planting flowers, veggies, and skirting wool at Stone's Throw Farmstead in June
- Reclaiming goat pasture and wrapping trees to protect them from goats as part of a silvopasture system at Tup's Crossing Farm in November

ACORN's first series of working bees was well attended by farmers and other community members who understand that a strong local food and farming system is essential to our collective well-being. Yes, we worked hard, but work brigades are never just about labor. We also shared laughter, broke bread together, built relationships, learned new skills, and deepened our understanding of the farms we visited.

For those of us new to these tasks, the experience offered a firsthand appreciation of the immense effort farmers invest in feeding their communities. Suddenly, that tub of Vermont Creamery chèvre made possible by Tup's Crossing or that onion from New Leaf Organics picked up at the Middlebury Co-op wasn't just a product—it had a face, a story, and now offered a deeper form of nourishment. Events like these create a vital bridge between producers and consumers, deepening appreciation for the labor, care, and dedication that farmers bring to our communities. More than just a financial transaction, they offer a meaningful way to invest in and support our local farm communities through shared experience and solidarity.

Building on the success of these initial gatherings, ACORN plans to offer more opportunities to join a Working Bee. Visit www.acornvt.org/event, sign up for our monthly newsletter, or follow us on Instagram @acornfoodnetwork for opportunities to join!



ACORN Team at Agroecology Encounter in July 2022.



Trellising tomatoes at Singing Cedars Farmstead in March 2024.

Farm Fresh Angus Beef

From our family to yours

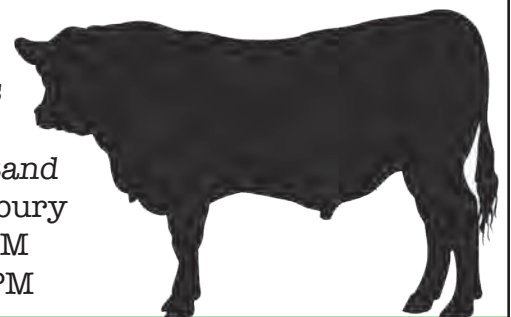
Farm raised in Salisbury, Vermont - Taste the difference!

Choose from a wide variety of cuts.

Proudly supplying local restaurants and caterers



Visit our farm stand
99 Route 7, Salisbury
Wed-Fri: 2 - 5 PM
Sat: 10 AM - 3 PM



(802) 363-4388 • nopsbeef.com



Grains of Home

BY AISHA THAPALIYA, ACORN BOARD MEMBER AND MIDDLEBURY COLLEGE '25.5 ENVIRONMENTAL JUSTICE MAJOR AND ARABIC MINOR

As we drove up to the Andrus' blue house in Ferrisburgh, I instinctively searched for familiar signs: terraced fields, colorful skirts swirling in muddied water, woven baskets brimming with harvest, and the slow tread of water buffalo through the paddies. These were the images of my family's home in Dhulikhel, Nepal, where rice is more than food; it is history, identity, and sustenance. *Daal Bhat* (lentils and rice), the staple meal of Nepali cuisine, is a taste of home I always return to.

This deep connection to rice brought me to Boundbrook Farm, where Erik and Zach welcomed us with a meal of fowl, fresh greens, and bread. Conversation flowed from Arabic studies (Erik's in Egypt, mine in Jordan) and wanderlust to our mutual love of food and the intricate ties between agriculture and culture.

Boundbrook Farm is a polyculture rice farm in Ferrisburgh, Vermont, doing something unique. At the heart of their approach is the *aigamo* method, a centuries-old Japanese technique that integrates ducks into rice cultivation. Since 2010, they have been working to adapt this method to the heavy soils and shifting climate of the Northeastern U.S. Using organic practices, they have established what is now the largest rice farm in the region.

"There is complexity and richness in the duck-rice model," Erik said, echoing Boundbrook's website, where a golden sheaf of New England rice accompanies the quote: "One duck, a thousand treasures."—Takao Furuno

As rice seedlings are transplanted, ducklings wade into the paddies. They eat pests, trample weeds, and aerate the soil, enriching it with nutrients. The rice remains untouched, as its high silica content makes it unpalatable to the web-



Locally harvested rice grown in the *aigamo* method at Boundbrook Farm in Ferrisburgh.

Photo courtesy of Aisha Thapaliya

footed swimmers. This is agroecology in motion, a tapestry of interactions that fosters biodiversity while sustaining food production.

Boundbrook Farm answers an urgent question: How do we cultivate food while also cultivating ecosystems? Unlike the monocultures of corn and soy, rice paddies can function as artificial wetlands. Herons, egrets, dragonflies, frogs, and toads all find refuge here. The paddies slow and filter water, strengthening the watershed and benefiting communities downstream. In Japan, these services are formally recognized as ecosystem benefits. Could they be in Vermont as well?

(See Grains, page 15)



- Certified Organic vegetables, fruit, and flowers
- Hanging Baskets, potted plants, annuals and perennials
- Organic vegetable starts
- Free choice CSA
- Meat, Dairy, Baked Goods and Local products from all over Vermont

<https://woodsmarketgarden.com/csa/> • 802.247.6630



PICK-YOUR-OWN & FARMSTAND
Ecologically-Grown Apples
Fresh Cider & Hard Cider

OPEN
MID-AUGUST
THRU EARLY
NOVEMBER

1333 NORTH
BINGHAM
STREET
CORNWALL

Lunch & Live Music on Weekends!
 PIES, TURNOVERS, CIDER DONUTS & MAPLE SYRUP
 ARTWORK, GIFTS, SCULPTURE WALK, PATIO & PICNIC TABLES

sunriseorchards.com

the tillerman
 EAT • STAY • CELEBRATE

enjoy a farm-to-table dinner from our wood fired
 oven wednesday-saturday

stay at our inspired farmhouse inn restored from
 its 1790's bones

experience live music every wednesday
 throughout the summer

1868 N 116 RD, BRISTOL • 802 643 2237 • [THETILLERMANVT.COM](http://thetillermanvt.com) • [@THE_TILLERMAN_VT](https://www.instagram.com/thetillerman_vt)

SENTINEL FARMS SUMMER CAMPS

Farm play builds compassion and self esteem!

Summer 2025: Farm-Based, Horse-Centered



Confidence Building activities

For youth 6-17

July 7-10:

Horse & Theater Camp
 Mon-Thu 9AM - 3PM

Aug 11-14

Horse & Farm Arts Camp
 Mon-Thu 9AM - 3PM

(Early drop-off and
 late pickup available)

"It has been amazing to see my daughter's confidence soar! Transformative life skills she's learned have made a huge impact in her day to day school life. She has really come out of her shell."

- Dani Waters



Visit: unboundgrace.org/summer-youth-camps
 Call/text Kerry Kurt at (802) 377-1066

EAT WITH YOUR HEART CONTENT!



Your Ultimate Nutrition
 grows UP from the
 Natural cycling of Our Rich,
 Carbon-sequestering soils.

RETRO REGENERATIONAL FARMING

When you choose Sentinel Farms' Real, Clean, Well-Loved, grass & browse-fed & finished Beef, you support a healthy, fearless & joyful life for every member of the Sentinel Farms herd, from birth through a graceful, on-farm harvest.

"Dear Kerry, Your tenderloin steak was superb!! Tender and delicious, and easy. You must be very proud!!"

- John Freiden

"We've been repeat customers because Kerry Kurt's beef is delicious, lean, grass-fed and local. Her farm supports the local community in many ways."

-Pat & Ray Mainer



Learn more at: unboundgrace.org/beef
 Call/text Kerry Kurt at (802) 377-1066



Rice continued from page 13

Erik is more than a farmer. His expertise spans importing specialized equipment, lobbying for wetland preservation, designing drones for agricultural use, and consulting with other farmers who are looking to grow rice. He is committed to an ecological vision of farming, one that resists the pressure to conform to industrial agricultural models. “Seeing is believing,” he says, advocating for rice as a viable crop in New England. The key is proximity to water, though not directly within a wetland itself. As Boundbrook continues to expand its reach, Erik imagines an organized network of rice farmers in the region that could share resources and build the necessary infrastructure to support one another.

At Boundbrook, rice is more than a crop, it is an immense gesture toward ecological renewal and community resilience. As we left the farm, the winter sun casting long shadows over the fields, I couldn’t help but feel that this landscape, though thousands of miles from my family’s home, held a familiar kind of promise, the promise of nourishment, continuity, and a way of farming that nurtures both the land and the people who depend on it.



Erik and his dog Georgie walking the fields at Boundbrook Farm.

Photo courtesy of Aisha Thapaliya

Addison County Farm Bureau

Providing a unifying voice for ALL farmers, we work to preserve the family farm. Whether you’re a farmer or not, we invite you to join our membership and advocate for all agricultural producers.

Learn more and join today at vtfb.org

**PYO FRUIT • FARM MARKET
& CIDER GARDEN**

Shoreham, VT

CHAMPLAIN VALLEY ORCHARDS & **DOUGLAS ORCHARDS**

3597 VT-74 W. 1050 VT-74

SHOREHAM, VT

Two historic orchards just 2 miles apart. Discover 150+ varieties of apples, pears, plums, peaches, strawberries, cherries & berries! Sip our Good Food Award winning-hard ciders, and shop our farm markets for fresh cider donuts, pies, maple syrup, and local provisions.

Visit websites for hours, PYO availability & other details.

ChamplainOrchards.com | DouglasOrchardsVT.com

CHAMPLAIN VALLEY CREAMERY

Single-source organic Vermont milk 100% grass-fed organic cheese

Hand Made

cvcream.com Middlebury, VT



**A new class
of vinegar, vinaigrette,
marinades and reductions.**

*For your table or
as a boxed gift.*

www.vtvinegars.com
facebook.com/vtvinegars

802-989-9645



**We offer a full line
of maple syrups and
value-added maple
products.**

*We offer Domestic and
International Shipping,
Wedding Favors, Private
Label, and Corporate Gifts.*

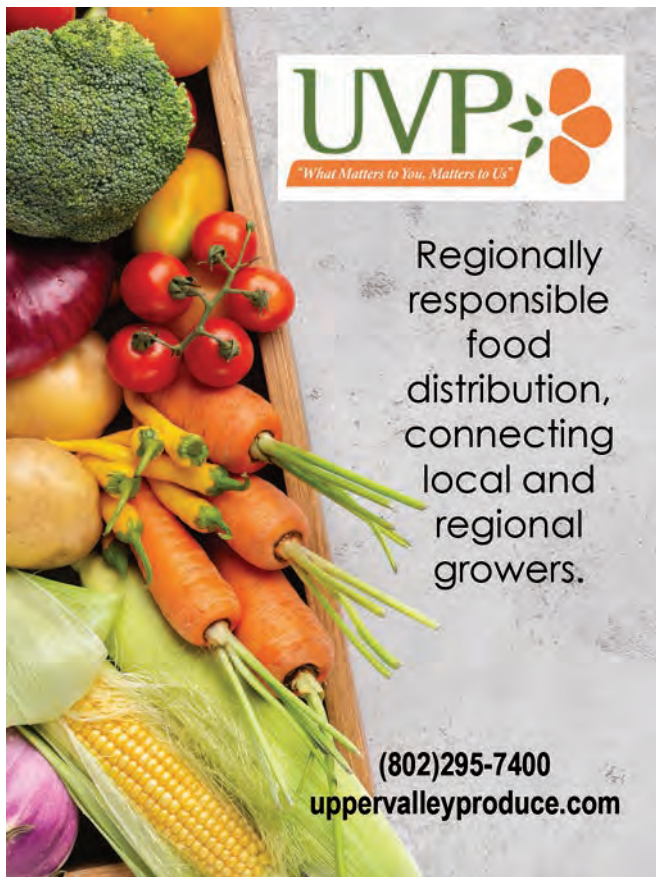
Visit our Honor Store at 486 Cider Mill Rd, Cornwall, VT 05753
Or online @ breadloafviewfarm.com to place an order for pickup.



Golden Rule...

Hire a bookkeeper!

Gold Standard Bookkeeping & Consulting
802.309.0149 shawna@goldstandardvt.com



**Regionally
responsible
food
distribution,
connecting
local and
regional
growers.**

(802)295-7400
uppervalleyproduce.com



**Beautiful Apple orchard
nestled in the hills of Monkton**

- PYO • Cider Doughnuts • Baked Goodies
- Fresh Pressed Cider • Music, Food & Cocktails

**Contact bevo food & bar catering
to book your next special event**

1823 Monkton Road, Monkton, Vt, 05469
(802) 453-2676 | stineorchard.com



Farm Directory

Addison

1. Harrison's Homegrown



Melanie and Patrick Harrison | 8042 Vermont Route 22A
Addison | 802-759-2605 | ptpatrick@gmavt.net

PRODUCTS: Beef (available by the quarter, half, or whole at the farm by appointment), milk, hay

AVAILABLE: Farm direct by appointment

SERVICES: Kids camps, riding lessons, horse boarding, educational programs

2. Harwood Farm



Alden Harwood | 1582 Route 17E | Addison | 802-989-0479
aharwood802@gmail.com

Vegetables, honey, pasta sauce, jelly, hay, mulch, maple. Farm stand is farmer owned and operated.

PRODUCTS: Herbs, sweet corn, flowers, assorted vegetables, baked goods, pickles and ferments, jams and jellies, plants and starts, hay, honey, maple

AVAILABLE: Middlebury Farmers Market, Vergennes Farmers Market, farm stand

SERVICES: Accepts EBT

3. Mike's Farm



Mike Eastman | 435 Town House Road | Addison
802-759-2764

Certified organic A2A2 Protein Raw Milk. Certified grass fed.

Available at the farm.

PRODUCTS: Raw milk

AVAILABLE: Farm direct

4. West Addison Acres

Tim and Amy Godard | 300 Atherton Road | Addison
802-349-7179 | westaddisonacres@gmail.com
westaddisonacres.com

Small family owned Black Angus beef farm.

PRODUCTS: Black Angus beef - retail cuts

AVAILABLE: Addison Four Corners Store, UVMCM Farmer's Market

Benson

5. Cobble Knoll Orchard

Amy Bartholomew | 1672 East Road | Benson
802-309-0144 | cobbleknollorchard@gmail.com
cobbleknollorchard.com

Pick your own apple orchard with a beautiful view in Benson, VT. New

Vermont Land Trust



UNITING LAND AND LIVES



For our farms,
our forests,
our future.

Explore the land with us
Places to go and things to do at
vlt.org



Pick your Own Apples and Orchard Stand
28 Different Varieties, Plums and Pears
Vermont Specialty Farm Food Products
and Artisan Work

Cider donuts and baked goods

Home of the Dreamee®!



Like/Follow us on Facebook
and Instagram
for up to date offerings
and happenings
yatesfamilyorchard.com



RambleBramble Farm

Certified Organic chicken, eggs, lamb & goat
farmer@ramblebramblefarm.com



huntington, vermont

family-owned orchard with over 80 varieties of apples. Fresh-pressed cider, homemade cider donuts, Vermont hard cider, our own wood-fired maple syrup and Vermont artisan cheese.

PRODUCTS: Apples, peaches, squash, pumpkins, baked goods, sweet cider, maple

AVAILABLE: Farm stand, pick your own

6. Falkenbury Farm

Bob Ambrozaitis | 1520 Park Hill Road | Benson
802-236-5302 | jojoerobert@yahoo.com | falkenburyfarm.com

Falkenbury Farm has BUNNIES! We are a homestead farm raising beef, a few dairy cows & goats. There is a single wide trailer on our property that we rent by the night where you will have cows in your backyard, wildlife, and incredible stargazing.

PRODUCTS: Beef, rabbit, hay

AVAILABLE: Farm direct

SERVICES: Farm stays/B&Bs

7. Little Sister Farm

Ben Jutzi | 2158 Stage Road | Benson | 812-202-1003
littlesisterfarms@gmail.com | littlesisterfarm.com

Started in the spring of 2023, Little Sister Farm is a market garden in the lower Champlain Valley focused on growing mixed vegetables using low impact sustainable practices.

PRODUCTS: Assorted vegetables and herbs, plants and starts

AVAILABLE: Rutland Farmers Market, local restaurants, farm stand

SERVICES: Farm stays

8. Maple Ridge Meats



Greg Hathaway | 464 Stage Road | Benson | 802-855-3351
mapleridgemeats@gmail.com | mapleridgemeatsvt.com

We are a full service USDA slaughter/processing facility and certified organic processor.

AVAILABLE: Facility direct

SERVICES: Certified organic meat processing

9. The Bur-Ger Farm

Sarah Hathaway | 1077 Stage Road | Benson | 802-537-3830
burgerfarmvt.com

The Bur-Ger Farm is a small, well-loved and operated family farm. We raise and sell 100% grass fed beef, pasture raised pork, lamb, and farm fresh chicken. Our eggs are free range and cage free.

PRODUCTS: Beef, pork, lamb, chicken, eggs

AVAILABLE: Delivery to Rutland and Middlebury areas. Call or email to order. Rutland, Bristol, Shelburne, and Fair Haven Farmers Markets

10. Vermont Natural Beef

Bob Stannard | 1943 Stage Road | Benson | 802-537-3711
vermontnaturalbeef.com


PRODUCTS: Beef, custom cut and delivered

AVAILABLE: Online

Brandon

11. Country Blossoms Honey

Fred Putnam, Jr. | Brandon | 802-247-3323



Serving
Breakfast
& Lunch
Hearty
& Delicious

OPEN
TUES-SAT 7AM-4PM
SUN 8AM-2PM

14 College St, Middlebury, VT
(802) 388-3371
OtterCreekBakery.com



OPEN
MON-SAT 7AM-2PM
CLOSED SUNDAY

51 Ossie Rd, E. Middlebury, VT
(802) 989-7220
OtterEast.com

Full Belly Farm

-ECOLOGICALLY GROWN PRODUCE-
FARM STAND & U-PICK

VISIT THE FARM!

MAY: PLANTS & FLOWERS

JUNE: U-PICK STRAWBERRIES

JULY: U-PICK RASPBERRIES

AUGUST: U-PICK BLUEBERRIES & FLOWERS

SEPT & OCT: MUMS & PUMPKINS GALORE!



LOCATED AT
686 DAVIS RD,
MONKTON, VT

HOURS: TUE-FRI 9-6 SAT & SUN 9-5
802-453-3793 FULLBELLYFARMVT.COM



countryblossomshoney@gmail.com

facebook.com/countryblossomshoney

Country Blossoms honey is noted by our customers for its richness, smoothness, and pleasing flavor qualities and aromas. We offer a variety of seasonal flavor variations that all retain those basic quality characteristics. Each seasonal variety has a unique flavor profile from mild and floral to more bold flavors with fruity notes common in ripe cherries. Country Blossoms honey comes from Vermont country wildflowers. Our honey is never heated or filtered (the definition of raw honey) nor is it ever adulterated by adding anything to it; it comes straight from our own hives just as our bees made it. Our honey won Best of Class and Best of Show at a VT Farm Show.

PRODUCTS: Sweet corn, liquid and crystallized honey, creamed honey, honey bee nucleus colonies, beeswax, honey favors for weddings, parties, and other events

AVAILABLE: Morningside Bakery and Pizza, Brandon Vermont Senior Citizens Center, Crossman's General Store, Kamuda's Country Market, LeClair Acres Farmstand, farm direct

SERVICES: Swarm removal, educational workshops for new and prospective beekeepers

12. Funk's Farmin'

Matthew Funk | Brandon | 802-324-3846

facebook.com/groups/372361616285678

PRODUCTS: Eggs, pork, turkeys, chickens, ducks, herbs, baked and canned goods, assorted vegetables, prepared meals, plants and starts, lumber, tinctures, mushrooms

AVAILABLE: Farm direct by appointment, Middlebury Natural Foods Co-op, Rutland Co-op, Greg's Meat Market, Wooden Barrel Country Store

SERVICES: Tractor/trailer/truck maintenance, landscaping and hauling

13. Hamilton Cattle Company

Jamie Hamilton | 4960 West Creek Road | Brandon

802-353-0737 | hamiltoncattlecovt@gmail.com

hamiltoncattleco.com

Hamilton Cattle Company is a grass-fed, cow-calf to finish beef operation. Owned and operated by Jamie Hamilton, the farm sells beef direct to consumer, to local stores and restaurants, as well as regionally.

PRODUCTS: Beef



AVAILABLE: Farm direct, Baird Farm, Kamuda's Country Market, Wooden Barrel Country Store

SERVICES: Custom farming

14. High Pond Goat Farm

Wendy Cijka | 1958 High Pond Road | Brandon

802-273-2655 | highpondgoatfarm@gmail.com

We are a small family run farm that started with 3 goats in 2004 and was licensed by the state in 2014. We produce a mild fresh chevre, goat milk yogurt and lotion. We are a seasonal dairy so product is available April through December only.

PRODUCTS: Rhubarb, eggs, cheese, yogurt, raw milk, goat dairy, soap and body products

AVAILABLE: ACORN Food Hub, Middlebury Natural Foods Co-op, Brandon Farmers Market, farm stand, Woods Market Garden, Morningside Bakery, Rutland Farmers Market

15. Foley Brothers Brewing

Robert Foley | 79 Stone Mill Dam Road | Brandon

802-465-8413 | foleyraff@yahoo.com | foleybrothersbrewing.com

Small boutique winery nestled on 5 acres overlooking golf course. Family operated and owned since 2007. All local grapes and fruit. Producing red and white wines. Black currant wines as well as wine spitzers.

PRODUCTS: Wine, currants, grapes

AVAILABLE: Healthy Living, City Market, Middlebury Natural Foods Co-op, Greg's Meat Market

SERVICES: Farm stays, B&Bs

Buy Local

Addison County Maple Sugarmakers Association



**Educating & Supporting
County Producers
Since 1979**

Our members produce a variety of maple products including:

**syrup, cream, granulated sugar,
candy, jelly and other treats
for any occasion or no occasion at all!**

**For award-winning MAPLE recipes, a list of
local sugarmakers, or to join the association**

Visit www.AddisonCountyMaple.org



16. Renaissance Farm

Diane Barrette | 1403 Arnold District Road | Brandon
802-236-6504 | renaissancefarmvermont@gmail.com
renaissancefarmvermont.square.site

We are a small, family run flower farm located in central Vermont that uses sustainable growing practices to keep our land as healthy as possible. We grow seasonally April - October.

PRODUCTS: Cut flowers

AVAILABLE: Rutland Farmers Market, farm direct by appointment

SERVICES: CSA, floral services

17. Spotted Dog Family Farm

Charles & Susan Whiting | 1516 Hollow Road | Brandon
802-247-6076 | cswhitng@aol.com
facebook.com/vermontirishdexters

Green World animal welfare approved.

PRODUCTS: Grass-fed, grass-finished beef, retail cuts, Dexter breeding stock, haylage in season

AVAILABLE: Farm direct, Cafe Provence



18. Wood's Market Garden

Dan and Elyse Wulfkuhle | 93 Wood Lane | Brandon
802-247-6630 | info@woodsmarketgarden.com
woodsmarketgarden.com

Woods Market Garden has been growing for the local community for close to 100 years. We grow a wide assortment of certified organic veggies, fruits, flowers, and more. Our farmstand is open from May-

October, with good food from all across our region.

PRODUCTS: Herbs, sweet corn, flowers, assorted vegetables, blueberries, pears, raspberries, peaches, melons, strawberries, wreaths and baskets, plants and starts, hay

AVAILABLE: ACORN Food Hub, Middlebury Natural Foods Co-op, City Markets, Healthy Living, farm stand, Farm Direct, Minifactory, website

SERVICES: CSA, community events, floral services, pick your own, farm events, EBT

Bridport

19. Bridport Creamery

Nicole Foster | 3284 Lake Street | Bridport | 802-758-6800
bridportcreamery@gmail.com | bridportcreamery.com

Founded 2013 by Nicole Foster. Artisanal pasteurized and raw milk cheeses.

PRODUCTS: Artisanal cheese, pasteurized and raw milk cheeses, cheese curds, swisslerella, colby, aged tomme cheese

AVAILABLE: ACORN Food Hub, Middlebury Natural Foods Co-op, Greg's Market, wholesale, farm stand, The Skinny Pancake, Wheel Inn, Halfway House, 7 South Deli, website

20. Champlain Valley Alpacas at The Vermont Wedding Barn

Les and Jenny Foshay | 152 Merino Lane | Bridport
802-758-3276 | alpaca@wcvr.com | champlainvalleyalpacas.org

The longest operating alpaca farm in the region with National Show honors, offering highest quality crafting fleeces, natural beef and alpaca, grapes and leaves in season and our 300 person event barn, overnights and camping.

PRODUCTS: Beef, alpacas, catnip, grapes, eggs, grape juice and jelly, fiber, pelts, fleece, fine finished woven alpaca products, alpaca jerky

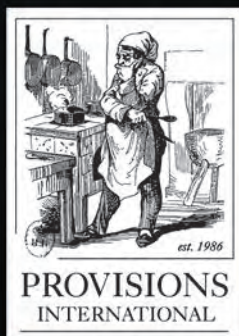
AVAILABLE: Farm direct

SERVICES: Breeding, community events, educational programs, farm events, farm stays/B&Bs, pick your own, weddings and large parties, hands on alpaca shearing experiences by appointment

21. Hemenway Hillbillies/Myrick Maple Works

Cindy/Steve/Steve Jr. Myrick | | Bridport | 802-236-8800 | myrick@middlebury.edu |

We are a multi-generational family operation located in Bridport making Vermont maple syrup the slow old-fashioned way, no R.O.,



*Wholesale purveyors
of fine specialty
foods for over
thirty-five years.*

(802)291-6100
provisionsintl.com



3284 LAKE STREET BRIDPORT, VT 05733 802-758-6800 AVAILABLE AT LOCAL RETAILERS



still using an open-pan wood-fired evaporator.

PRODUCTS: Maple syrup, value-added products like maple sugar, maple coconut crunch and maple glazed nuts made to order year 'round.

AVAILABLE: Farm direct (phone/text orders, at the sugarhouse during the season), Broughton's Farm Supply and Pratt's Store

SERVICES: Shipping and delivery

22. Little Ditty Farm

Jessica Addis | 642 Route 22A | Bridport | 802-349-3441

jessica@littledittyfarm.org | littledittyfarm.org

Goat milk soap, bath bombs, lotion bars, scrubs.

PRODUCTS: Goat milk soap, caramels, fudge and bath products, free range eggs

AVAILABLE: Pratt's Store, website

23. Long Cloud Farm

Stephen Clark | 2069 VT Route 125 | Bridport

646-509-5560 | longcloudfarmvt@gmail.com

longcloudfarm.com

PRODUCTS: Lamb

AVAILABLE: ACORN Food Hub, Middlebury Natural Foods Co-op

SERVICES: Breeding, contract grazing

24. Morgan Hill Farm

Cheryl Connor | 2710 Route 22A | Bridport | 802-349-8635

mhfarms@gmavt.net

Morgan Hill Farm is owned by Jerry and Cheryl Connor. We relocated the farmstand and now have 600 chickens at our home farm. We sell eggs at our farmstand and at the Middlebury Natural Foods Co-op. Stop by and try some of our restaurant quality eggs. Oh, and you will love the view!

PRODUCTS: Eggs

AVAILABLE: Middlebury Natural Foods Co-op, Haymaker Bun Company, Tourterelle, farm stand

25. Shallow Rock Farm

Lynn Clohessy | 603 Market Road | Bridport | 802-989-2752

lynnffmfd@yahoo.com

Growing flowers, vegetable and perennial starts since 2012. Offering a large selection of favorites as well as new and other unique fun finds.

PRODUCTS: Plants and starts

AVAILABLE: Farm stand

26. Understory Farm

Gregory Witscher | 2076 East Street | Bridport

802-282-6738 | understoryfarmvt@gmail.com

understoryfarmvermont.com

PRODUCTS: Flowers

AVAILABLE: Vermont grocery stores, website

SERVICES: Floral services

Bristol

27. BCC Botanicals

Megan Walsh | 140 North Street | Bristol |

bccbotanicals@gmail.com

BCC Botanicals offers a wide range of plants for sale; Annuals, perennials, veggies, herbs & a growing farmstand! Many new plants this year, great plans for a new commercial kitchen & bakery, educational opportunities, community events & live music!

PRODUCTS: Assorted vegetables, herbs, flowers, perennials

AVAILABLE: Farm stand

SERVICES: Community events, educational programs

28. Bristol Community Gardens

Catherine Cover | 416 Hewitt Road | Bristol | 802-453-4855

ccover@gmavt.net | bristolcommunitygarden.weebly.com

Bristol Community Gardens offers garden space for residents of the 5-Town area. We are located on farmland on Hewitt Road, 1 mile from Bristol Village. Gardeners pay per square footage of their garden plot. We are committed to organic methods.

PRODUCTS: Assorted vegetables

SERVICES: Community events, community garden plots

29. Emerald Rose Grows

Greg Newman | 11 Main Street | Bristol | 802-453-4797

emeraldrosefarms@yahoo.com | emeraldrosegrows.com

We're a cannabis farm in downtown Bristol.

PRODUCTS: Soil amendments, soil mix, lights, fans, nutrients, grow tents, novelty seeds

AVAILABLE: Retail direct, website

Maple Meadow Farm

... Where eggs come first.



CAGE FREE • FARM FRESH EGGS
MAPLE SYRUP

518 Maple St., Salisbury, VT
802-352-4241



The DEVOID FAMILY

SINCE 1946



Monday, Tuesday & Friday, 8 a.m.-noon • Thursday, 8 a.m.-4:30 p.m.



30. Farmhouse Chocolates

Eliza La Rocca & Erlé LaBounty | 25B Mountain View Street
Bristol | 802-349-6228 | info@farmhousechocolates.com
farmhousechocolates.com

This isn't just chocolate. It is an invitation to slow down. Expand, light up, be still. Just for a moment. Savor.

PRODUCTS: Handmade truffles, caramels & chocolate bars crafted with organic, fair trade, soy-free chocolate. Some vegan options. Mostly dark chocolate with a few milk chocolate options, too!

AVAILABLE: Factory store, on our website and Etsy for year-round, nationwide delivery. Middlebury Natural Foods Co-op, Healthy Livings, City Markets, Hunger Mountain Food Co-op, and outside of VT

31. Firefly Fields



Nathan Hammer | 125 Colin Drive | Bristol | 802-522-4261
hammer.nathan@gmail.com | fireflyfields.org

Firefly Fields is a certified organic diversified market garden. It wholesales its products to the Middlebury Co-op, local restaurants, catering companies, and works with some nonprofits to supply a CSA style produce to marginalized communities.

PRODUCTS: Assorted vegetables, herbs, melons, raspberries, strawberries

AVAILABLE: ACORN Food Hub, Middlebury Natural Foods Co-op

SERVICES: Educational programs

32. Four Blooms Farm

Sarah and Thomas Demars | 330 Choiniere Road | Bristol |

802-349-4198 | sarah@fourbloomfarm.com
fourbloomfarm.com

Four Blooms Farm is a family run flower farm where beauty blooms all year long in Bristol VT. Four Blooms is operated by Sarah and Thomas Demars alongside their four young children; we are committed to growing with care for both the environment and the community.

PRODUCTS: Fresh cut locally grown flowers

AVAILABLE: Farm stand

SERVICES: We offer several bouquet CSA's throughout the year, market bouquets, do-it-yourself blooms, U-pick flowers, a farmstand and more!

33. Gateway Farm

Abby Roleau | 506 North 116 Road | Bristol | 802-453-5263
thegatewayfarm@gmavt.net | thegatewayfarm.com

PRODUCTS: Maple syrup, beef, pork, poultry, lamb, corn, squash, tomatoes, cucumbers, apples, peaches

AVAILABLE: Farm stand and 25B Mountain View Street, Bristol (check website for hours), website

SERVICES: Pick your own pumpkins

34. Hogback Mountain Brewing

Samantha Sawyer | 372 Rockydale Road | Bristol
802-643-2304 | sam@hogbackbrew.com | hogbackbrew.com

Founded in 2015, Hogback Mountain Brewing is a nano-brewery embracing the concept of local supporting local. Owned and operated by Jamie and Samantha Sawyer, Hogback Mountain crafts hyper-local traditional styles infused with a Vermont flair. Head



brewer, Sam, utilizes key ingredients from local producers in Vermont and as close to home as possible.

PRODUCTS: Hyper-local beer

AVAILABLE: Distributed across the state

SERVICES: Private events in the taproom, including farm to table fare from Lucky Star Catering

35. Little Hogback Farm

Matthew Davis | 2365 Lower Notch Road | Bristol

802-598-8204 | littlehogbackfarm@gmail.com

littlehogbackfarm.com

PRODUCTS: Maple products: maple syrup, maple cream, maple sugar

AVAILABLE: Middlebury Natural Foods Co-op, Waitsfield Farmers Market, website

36. Lower Notch Farm

Matt Bryan | 1908 Lower Notch Road | Bristol | 615-830-0369

lowernotchfarm@gmail.com | lowernotchfarm.com

PYO blueberry farm.

PRODUCTS: Blueberries, Flowers

AVAILABLE: Farm direct Pick your own, wholesale

37. Mayer Maple Producers

Alan and Cindy Mayer | 4395 South 116 Road | Bristol

802-453-5129 | clsmayer@gmail.com

PRODUCTS: Maple syrup

AVAILABLE: Precision Print & Copy in Vergennes, direct sales, free local delivery

38. Norm Booska

Norm Booska | 149 Lower Notch Road | Bristol | 802-453-5653

PRODUCTS: Raspberries, black raspberries, blackberries

AVAILABLE: Middlebury Natural Foods Co-op

39. savouré soda

Jess Messer | 26 Main Street | Bristol | 802-734-4236

jess@savouremtl.com | savouremtl.com

Check out our website for a full list of stockists of canned veggie seltzers and bottled sodas, and online ordering. Follow us on Instagram @savouremtlvt for latest news and updates on Tandem events and rotating flavours.

PRODUCTS: On tap and bottled seasonal sodas and canned seltzer

AVAILABLE: Available at Tandem, our production kitchen in Bristol

40. V Smiley Preserves

V Smiley | 16 Main Street | Bristol | 802-453-3280

honeyjam@vsmileypreserves.com | vsmileypreserves.com

V Smiley Preserves was founded in 2013 in Seattle, WA knowing its forever home was in Vermont where V grew up. Now produced at Minifactory, a cafe + market operated by V Smiley in Bristol, VT, V Smiley Preserves continues to make honey sweetened jam.

PRODUCTS: Jams and jellies

AVAILABLE: Middlebury Natural Foods Co-op, Burlington Farmers Market, Minifactory, Website

SERVICES: private dining

41. Wild Roots Farm

Jon Turner | 195 Harvey Road | Bristol | 802-377-1214

wildrootsfarmvt@gmail.com | wildrootsfarmvermont.com

Wild Roots Community Farm is a veteran-owned 10 acre operation dedicated to resilience through food systems education and wilderness living skills. Wild Roots offers workshops, and activities in agroforestry, animal husbandry, ecological design, survival, wilderness medicine and functional fitness.

SERVICES: Education and workshops

42. Yore Fare Farm

Anthony Myrick | Bristol | anthony.myrick@hotmail.com

I've raised pastured poultry, eggs, pork and beef since 2009.

PRODUCTS: Beef, poultry, pork, eggs

AVAILABLE: Farm direct

Charlotte



43. Adam's Berry Farm

Adam Hausman | 985 Bingham Brook Road | Charlotte

802-578-9093 | info@adamsberryfarm.com

adamsberryfarm.com

Adam's Berry Farm is a community-oriented farm that grows delicious certified organic strawberries, blueberries and raspberries. Over the last 20 years the farm has created community through food and berries. Enjoy fresh berries, popsicles and sorbet at the farm stand and at pick your own (check the website for what's available).

PRODUCTS: Strawberries, blueberries, raspberries, pears, melons, pumpkins, flowers, eggs, jams and jellies, popsicles, sorbet and frozen berries

AVAILABLE: ACORN Food Hub, farm stand, City Market, Healthy Living, Burlington Farmers Market, wholesale

SERVICES: Pick your own berries and flowers, educational programs and event space, farm stand

44. Allen Family Maple

David Allen | 82 Split Rock Road | Charlotte | 802-734-1105

mansfield@gmavt.net | mansfieldforest.com

David and Jane Allen have been marketing their maple syrup for over 30 years. We ship syrup throughout the U.S. and to Europe.

PRODUCTS: Maple syrup

AVAILABLE: Gilfeather's, Charlotte General Store, the Old Brick Store, website

45. Charlotte Village Winery

William Pelkey | 3968 Greenbush Road | Charlotte

802-425-4599 | info@charlottevillagewinery.com

charlottevillagewinery.com

PRODUCTS: La Crescent, Merlot, Cabernet, Chardonnay Wine, three styles of Blueberry wine and other sweet wines

AVAILABLE: Vineyard direct

SERVICES: Tasting room open May through December, free wine tasting, phone to order



46. Fat Cow Farm

Peter Trono | 800 Bingham Brook Road | Charlotte
802-864-7828 | fatcowfarmstore@gmail.com

PRODUCTS: American-style Wagyu beef, pork, lamb, seasonal poultry, maple syrup, honey

AVAILABLE: Farm store, Spear's Corner Store, East Charlotte, Shelburne Tap House, Backyard Bistro

47. Golden Apple Family Farm

1052 Whalley Road | Charlotte
goldenapplefamilyfarm@gmail.com
goldenapplefamilyfarm.com

Golden Apple Family Farm is a diversified orchard and farm in Charlotte, Vermont. We offer seasonal vegetables, flowers, and fruit. Our year-round farmstand features pastured, heritage chicken, lamb, pork, eggs and raw honey.

PRODUCTS: Poultry, pork, lamb, assorted vegetables, sweet corn, herbs, flowers, apples, blackberries, melons, peaches, pears, plums, raspberries, strawberries, eggs, sweet cider, jams and jellies, honey

AVAILABLE: Farm stand, website

SERVICES: Farm events

48. Grass Cattle Company



Steve Shubart | 1677 Hinesburg Road & 2408 Shelburne Falls Rd
Charlotte | 802-363-4575 | steve@grasscattlecompany.com
grasscattlecompany.com

Visit our two Farm Stores for 100% grass-fed & finished, antibiotic &

hormone-free beef, Certified Organic, Pasture Raised Chicken, and NON GMO eggs, all raised regeneratively on our farm. We're open every day from 8am-8pm. Self-checkout on Ipad. Credit card only. @GrassCattleCompany

PRODUCTS: Beef cuts, organic pasture raised chicken beef bundles, pasture-raised eggs, tallow soap

AVAILABLE: Ranchstand, 8am-8pm, Open 7 days a week!

49. Greylaine Farm

Michael Kirk | Charlotte | 802-349-4994
mike@greylainefarm.com | greylainefarm.com

Dorset x il de France Sheep raised on pasture in Charlotte.

PRODUCTS: Lamb, mutton, wool, pelts

AVAILABLE: ACORN Food Hub, farm direct, wholesale

50. Hands and Heart Farm

Katherine Knox | Charlotte | 802-233-2640
katherineknox11@gmail.com | handsandheartfarm.com

Family owned and run sheep farm which is the home to a herd of traditional, registered Border Leicester and Romney sheep raised with love and respect for the breeds, the environment and the individuals.

PRODUCTS: Lamb, mutton, fiber, wool, pelts, fleece, roving

AVAILABLE: Norwich Knits, Must Love Yarn, farm direct

51. Head Over Fields



Katie Rose Seward | 6035 Ethan Allen Highway | Charlotte
802-425-5866 | headoverfieldsvt@gmail.com

**Center for an
Agricultural
Economy**

**Providing critical infrastructure
and business resources for rural farms
and food producers across Vermont**

**COMMUNITY
CONNECTIONS**

**FARM & FOOD BUSINESS
RESOURCES**

FARM CONNEX

JUST CUT

CAEVT.ORG

ATKINS FIELD

**VERMONT FOOD
VENTURE CENTER**

FOOD HUB

**VERMONT
FARM FUND**

**SOWING OPPORTUNITY
GROWING COMMUNITY**



headoverfieldsvt.com

Head Over Fields is cultivating 5 acres of certified organic vegetables year-round in the Champlain Valley. Our farm stand is conveniently located on Route 7 near Mount Philo State Park and is open 5 days/week May-November. In the winter months, we have a self-serve winter farm stand with winter greens and storage crops in the red shed on the northside of our shop. We have Spring, Summer and Fall CSA Shares and can be found at the Shelburne Farmers Market on Saturdays May-October.

PRODUCTS: Assorted vegetables, herbs, flowers, plants and starts, wreaths and baskets, honey

AVAILABLE: ACORN Food Hub, farm stand, Shelburne Farmers Market

SERVICES: CSA, wholesale, floral services

52. High Hedge Farm

Bruno Murphy | 69 Ashe Road | Charlotte | 802-373-8378
bandt98@gmail.com

PRODUCTS: Wholesale hay, feeder cattle

AVAILABLE: Farm direct, call to order

53. Horsford Gardens and Nursery

Charlie Proutt | 2111 Greenbush Rd | Charlotte
802-425-2811 | info@horsfordnursery.com
horsfordnursery.com

Welcome to Horsford Gardens and Nursery, where local gardeners have trusted us with growing for their landscapes since 1893. Explore our botanical gardens, 40 acres of growing fields, antique

greenhouses, and large native plant selection.

PRODUCTS: Plants and starts, trees, wreaths and baskets

AVAILABLE: Farm direct, website

SERVICES: Educational programs, Art in the Garden series, landscaping, planting, maintenance

54. Nitty Gritty Grain Co. of Vermont



Thomas Kenyon | 4458 Lake Road | Charlotte
802-425-4544 | ckenyon@nittygrittygrain.com
nittygrittygrain.com

Nitty Gritty Grain was started in 2008 by Tom Kenyon of Aurora Farm. We sell a Certified Organic baking mix, cornmeals, flours, wheat berries, and corn berries. We are an 8th Generation Farm Family who believes in providing the best possible grains.

PRODUCTS: Grains, baking mix

AVAILABLE: ACORN Food Hub, Middlebury Natural Foods Co-op, Healthy Living, City Market, Farm Direct, website

55. Pelkey's Blueberries

3968 Greenbush Road | Charlotte | 802-425-3281

PRODUCTS: Blueberries, jam, pies, creemees

AVAILABLE: Farm direct

SERVICES: Pick your own

56. Plum Hill Farm

201 Line Drive | Charlotte | 802-310-2803
plumhillfarm@gmavt.net | plumhillfarm.com



VLS&P

VERMONT LIVESTOCK SLAUGHTER & PROCESSING

76 Depot Road, Ferrisburgh, VT



Vermont Livestock S & P Co is proud to announce that our remodeling is complete, and we are now able to serve our customers better for their product marketing.

We would like to thank our customers for their continued support and business during this transition

Call to discuss how we can help your business grow
(802) 877-3421



Plum Hill Farm is a small family orchard in Charlotte specializing in stone fruit, plums, peaches, and cherries.

PRODUCTS: Plums, peaches, cherries

AVAILABLE: Burlington Farmers Market

57. Rise 'n Shine

Peter | 343 Root Road | Charlotte | 802-264-1913

peter@risenshine.farm | risenshine.farm

We deliver milk six days a week, year round. We deliver to 10 towns on a weekly basis. We currently offer products from 30+ farmers on our home delivery routes. 200 products delivered to your door.

PRODUCTS: Bottled milk

AVAILABLE: Farm stand, home delivery

58. Sobremesa

Caitlin and Jason Elbersen | Charlotte | 802-279-3444

sobremesavt@yahoo.com | sobremesavt.com

PRODUCTS: Kimchi, sauerkraut, kombucha, fire cider, elderberry syrup

AVAILABLE: ACORN Food Hub, Middlebury Co-op, City Market, Burlington Farmers Market, website

59. Stony Loam Farm

Dave Quickel | 2755 Hinesburg Road | Charlotte

802-238-0255 | stonyloamfarm@hotmail.com

stonyloamfarm.com

PRODUCTS: Assorted vegetables, flowers

AVAILABLE: City Market, Healthy Living, Shelburne Supermarket, American Flatbread Burlington, Archie's, Stone Soup

SERVICES: Summer vegetable and flower CSA

60. Sweet Roots Farm



Jane MacLean | 4702 Ethan Allen Highway | Charlotte

802-425-3652 | jane@sweetrootsvt.com

sweetrootsvt.com

PRODUCTS: Assorted vegetables, herbs, plums, blackberries, blueberries, strawberries, pears, peaches, melons

AVAILABLE: ACORN Food Hub, farm stand, farm direct

SERVICES: Pick your own blueberries, CSA

Cornwall

61. Birdsong Herb Farm



Emily Givens | 1683 Sperry Rd | Cornwall | 541-948-2370

birdsongherbfarm@gmail.com

Proudly growing medicinal herbs, cut flowers and veggies for seed production. New in 2025: U Pick Flowers!

PRODUCTS: Herbs, flowers, assorted vegetables, soap and body products

AVAILABLE: Farm stand, farm direct

SERVICES: Pick your own

62. Bread Loaf View Farm

Kenn Hastings | 486 Cider Mill Road | Cornwall

802-349-1755 | maplekenn@gmail.com

breadloafviewfarm.com

Bread Loaf View Farm, established in 1985, produces all grades of pure maple syrup and value added products. We offer farm store pickup, online sales and ship our products worldwide. Private label and wedding favors are a specialty.

PRODUCTS: Specialty products including Bourbon infused syrup, maple cream, fudge, granulated sugar, candies, granola, hot sauces, honey and gift packs

AVAILABLE: Addison West, Costello's Market, Frog Hollow, Champlain Valley Apiaries, Zeno House, website

SERVICES: Farm tours during spring and fall, open house events, private tours by appointment

63. Cutting Hill Beef



Ramsey/Caroline Mellish | 2438 South Bingham Street

Cornwall | 802-287-1813 | info@cuttinghillbeef.com

cuttinghillbeef.com

PRODUCTS: Organic beef

AVAILABLE: Farm direct, website

64. The Knoll

Middlebury College students | 152 VT-Route 125 | Cornwall

802-443-5788 | knoll@middlebury.edu

go.middlebury.edu/knollhours

The Knoll (formerly Middlebury College Organic Farm) is a space for



Addison County River Watch Collaborative

Supporting water quality and riparian lands in Addison County through volunteers and citizen science.

Join us!

Learn how you can improve water quality on your own property through our "Soak It Up" program!

Visit acrwc.org or email acrwcvt@gmail.com

Thank you farmers for being such good land stewards and caring for our waters!





students and the community to explore the transformative potential of food as a medium to cultivate justice of all kinds. The Knoll sits on the edge of the TAM and is run by students under the mentorship of Megan Brakeley '06. Join us for gardening and events of all kinds!

PRODUCTS: Diversified vegetables, herbs, flowers, and fruit for community and campus partners

SERVICES: Community and local school partnerships, Serenity Garden and labyrinth, and events

65. Lemon Fair Honey Works

Andrew Munkres | 2703 West Street | Cornwall
ajmunkres@yahoo.com | lemongfairhoneyworks.com

Treatment-free

PRODUCTS: Honey and comb honey from untreated bees, queen bees, nucleus colonies

AVAILABLE: Middlebury Natural Foods Co-op, City Market/Onion River Co-op, Healthy Living Market, Sunrise Orchards, Rutland Area Food Co-op, Hunger Mountain Co-op, Jake's ONE Market, wholesale

SERVICES: Please email to sign up for nucleus colonies



66. Rowe Crest Farm

Daniel Rowe | 123 Lambert Lane | Cornwall | 802-349-4530

PRODUCTS: Grass-fed beef, organic hay, grass-fed steers for finishing

AVAILABLE: Farm direct

67. Sunrise Orchards

Chris and Barney Hodges | 1287 N. Bingham Street
Cornwall | 802-989-0694 | chodges@sunriseorchards.com
sunriseorchards.com

Sunrise Orchards is a family owned and operated 150 acre orchard on a beautiful ridge in West Cornwall. We have a diverse range of offerings including a secluded pick your own area, farmstand, on-site packing house and acres of wholesale cider orchards.

PRODUCTS: Cider, donuts, 12 varieties of eco-certified apples, pies, turnovers, applesauce and many other Vermont made and grown products in our farmstand

AVAILABLE: Middlebury Natural Foods Co-op, Greg's Market, Pratt's General Store, farm direct, farm stand

SERVICES: Pick your own in season at 1333 N Bingham St, Cornwall

68. Twig Farm

Michael Lee | 2575 South Bingham Street | West Cornwall
802-462-3363 | twigcheese@gmail.com | twigfarm.com

PRODUCTS: Goat's milk cheeses

AVAILABLE: Middlebury Natural Foods Co-op, City Market, Healthy Living, website

SERVICES: Farm stays/B&Bs

69. Williams Farm Maple

Kevin Williams | 5283 Route 30 | Cornwall | 802-771-7307
blueribbonvtmaple.com

PRODUCTS: Maple syrup, maple products

AVAILABLE: Farm direct, website

70. Windfall Orchard

Bradley Koehler | 1491 Route 30 | Cornwall | 802-462-3158
bradk@shoreham.net

Family run orchard with over 100 apple varieties. We sell local farmstead cheeses and other local products.

PRODUCTS: Apples, plums, pears, blueberries, farmhouse hard cider, ice cider, fresh pressed cider, homemade soup and stew, and woodfired par-baked pizza

AVAILABLE: Middlebury Natural Foods Co-op, farm stand

SERVICES: Catering, farm tours, wedding/event site, pick your own

Ferrisburgh

71. Dakin Farm

Sam Cutting | 5797 Route 7 | Ferrisburgh | 1-800-99DAKIN
customerservices@dakinfarm.com | dakinfarm.com

No trip to Vermont would be complete without a stop at Vermont's tastiest attraction. Dakin Farm is your one-stop shop for Vermont's finest cob-smoked meats, pure maple syrup, artisan Vermont cheese, specialty gifts, and much more. Stop by our Ferrisburgh or South Burlington location and shop online for nationwide delivery.

PRODUCTS: Pure Vermont maple syrup, smoked meats, artisan cheese, Vermont clover honey, preserves, specialty gifts and so much more!

AVAILABLE: Retail stores in Ferrisburgh and Burlington, website

-Bristol Botanicals-

Follow

@ THE B.C.C. (BRISTOL COLLABORATIVE CAMPUS)
140 North Street Bristol VT

Growth

- 5 GREENHOUSES
- ANNUALS
- PERENNIALS
- VEGETABLES
- HERBS

Goods

- FARM PRODUCE
- LOCAL MEATS
- A GREAT VARIETY OF LOCAL ARTISAN CRAFTS
- & SOOOO MUCH MORE

Gathering

- LIVE MUSIC
- EDUCATIONAL OPPORTUNITIES
- CHILL ZONE - COME HANG!
- COFFEE & COLD DRINKS
- COME SEE US SOON



72. Dream in Color

Muff Parsons-Reinhardt | 286 Old Hollow Road | Ferrisburgh
802-881-4880 | muff.parsons@uvm.edu

A little home industry. We are eclectic and offer many unusual items. Wooden trinkets & art signs, beaded jewelry, jams, pickles. Also carry 2 other generations of assorted art. Grandfather PB Parsons art work & Phil Parsons Jr. cut stones.

PRODUCTS: Pickles and ferments, jams and jellies

AVAILABLE: Craft shows, farm stand

73. Earth House Farm

Finn Yarbrough | 4215 Sand Road | Ferrisburgh
802-877-6288 | finn.yarbrough@gmail.com

PRODUCTS: Live lambs for purchase

AVAILABLE: Farm direct, call ahead for pick-up

74. Fern Bridge Farm

Kelly Otty | Ferrisburgh | 802-793-2218
fernbridgefarm@gmail.com | fernbridgefarm.com

We raise Shetland sheep for their incredibly warm, soft, versatile wool. We have the wool processed in Vermont mills and dye it ourselves. We offer educational farm experiences, knitting & spinning lessons, yarn, roving, fleeces, and sheep for sale.

PRODUCTS: Wool, fleece, roving, fiber, yarn, knitting & felting kits, eggs, honey

AVAILABLE: Farm direct

SERVICES: Breeding, educational programs, farm events

75. Flowerpower VT

Anne Matthews | 991 Middlebrook Road | Ferrisburgh
802-877-3476 | flowerpowervt@gmail.com
flowerpowervt.com

For the past 20 years, we have been farming specialty cut flowers. These are available by pick up in our farm store, as well as local delivery. We design gorgeous bridal work, installing wedding blossoms in many of the beautiful venues in the state. You can also find yarn from our flock of Finn sheep and Suri llamas for sale on Etsy.

PRODUCTS: Flowers, eggs, fiber, wool, yarn, CBD

AVAILABLE: City Market, farm stand, Must Love Yarn store

SERVICES: Floral services

76. Fuller Mountain Farm

Sheri & Alexander Arroyo | 1411 Fuller Mountain Road
Ferrisburgh | 802-391-0121 | info@fullermountainfarm.com
fullermountainfarm.com

Fuller Mountain Farm is a dynamic and sustainable farm. We are focused on tree crops, heirloom vegetables, medicinal and culinary herbs, flowers, and heritage breed chickens. We utilize concepts of agroecology and permaculture on our farm.

PRODUCTS: Assorted seasonal vegetables, herbs, flower bouquets, asparagus, rhubarb, strawberries, raspberries, eggs, baked goods, jams and jellies, pickles and ferments, soap and body products, beans, wool yarn, roving, farm-sourced seeds

AVAILABLE: Middlebury Natural Foods Co-op, farm stand, website

SERVICES: Community events, floral services

77. LaLumiere Farm and Greenhouse

Justin and Karolyn Lalumiere | 3747 Sand Road | Ferrisburgh
802-349-7782

Lalumiere Farm is a small, sustainable, family operated farm since 1986. Over the years we've added greenhouses to the farm for extended produce production in spring and fall. We are best known for our early delicious tomatoes, sweet melons, spring mix, and late season strawberries. Also low sugar jams and pickles from old family recipes.

PRODUCTS: Assorted vegetables, herbs, greens, strawberries, melons, bedding plants, hanging baskets, planters, vegetable starts, jam, pickles, and farm merchandise

AVAILABLE: Shelburne Farmers Market, Winooski Farmers Market, Vergennes Farmers Market, Great Harvest Bread, Cucina Antiqua Bistro, CSA

78. Scott's Greenbush Gardens

Bill & Donna Scott | 79 Quaker Street | Ferrisburgh
802-425-2370 | wjscottjr@comcast.net

U-pick fall raspberries, wholesale sweetcorn, pumpkins, squash, melons

PRODUCTS: Sweet corn, pumpkins, winter squash, raspberries

AVAILABLE: Farm stand

SERVICES: Pick your own

AGWAY

YOUR PLACE FOR ALL YOUR FARM AND GARDEN NEEDS!

Brands you Trust, People You Know!



Poulin Grain
A Family Feed Company
BAGGED FEED



carhartt
CLOTHING
FOOTWEAR



carhartt
CLOTHING
FOOTWEAR



MUCK
BOOT COMPANY



DARN TOUGH
VERMONT

FENCING, GATES
LIVESTOCK ANIMAL HEALTH

EQUINE SUPPLIES, LONG HANDLED TOOLS
SEEDS, SOILS & BULK/BAGGED MULCH

STARTER VEGETABLE AND FLOWER PLANTS
Annuals, Perennials,
Shrubs, Fruit/Shade Trees

MIDDLEBURY AGWAY FARM & GARDEN
338 Exchange Street, Middlebury VT • 388-4937
Mon - Fri 8-6, Sat 8-5, Sun 9-4.





low Carrying
arn Tough!

Open
7 Days

YOUR YARD, GARDEN and PET PLACE™





79. Van De Weert Farmstand

Bill Van De Weert | 3670 Route 7 | Ferrisburgh
 bvandeweert@gmail.com

Specializing in new potato, sweet corn and fall decorations including diverse gourd selection, corn stalk bundles and ornamental corn.

PRODUCTS: Sweet corn, cucumbers, squash, yellow, red and blue potatoes, pumpkins, apples, melons, tomatoes, hay, mums

AVAILABLE: Farm stand

SERVICES: Hay

80. Vermont Livestock Slaughter and Processing Co.

Carl Cushing | 76 Depot Road | Ferrisburgh | 802-877-3421
 vermontmeat@gmail.com

PRODUCTS: Beef, lamb, pork, sides, retail cuts, and roaster pigs are available through our customers

SERVICES: USDA inspected meat processing

Goshen

81. Ice House Farm

Morgan and Chad Beckwith | 421 Hathaway Road | Goshen
 802-247-1443 | goats@icehousefarmvt.com
 icehousefarmvt.com

Our most meaningful work is with our animals and on the land. Our goal is to build a healthier environment with a more robust surrounding ecosystem. We do this by adaptively grazing a herd of dairy goats, moving them to new pastures each day.

PRODUCTS: Cheese, goat dairy, raw milk, yogurt, kefir

AVAILABLE: Middlebury Natural Foods Co-op, Healthy Living, farm stand, website

SERVICES: Farm tours by appointment, farm events

82. Republic of Vermont



Ethan West | 234 Cape Look Off Road | Goshen
 802-989-2901 | ethan@republicofvermont.com
 republicofvermont.com

Vermont is an exceedingly special place and we've made it our life's work to share this unique little state with the rest of the world in the best way we know how: by producing organic maple syrup & raw honey - the two most quintessentially Vermont products.

PRODUCTS: Maple syrup, raw honey, rum-aged maple syrup

AVAILABLE: Website

Granville

83. Clearfield Farm



John Hirsch | 250 Genes Road | Granville | 802-565-0774
 clearfieldfarmvermont@gmail.com | clearfieldfarmvt.com

Clearfield Farm is a wholesale mixed vegetable farm producing fingerling and regular potatoes, carrots, delicata squash, tomatoes, broccolini, shishito peppers and more.

PRODUCTS: Assorted vegetables

AVAILABLE: ACORN Food Hub, Middlebury Natural Foods Co-op, grocery stores, restaurants, institutions, food shelves, CSAs and wholesalers in central Vermont

84. Old Road Farm



Henry Webb | 4911 Route 100 | Granville | 802-318-0423
 henry@oldroadfarmvt.com | oldroadfarmvt.com

PRODUCTS: Assorted vegetables

AVAILABLE: ACORN Food Hub, Shelburne Farmers Market, Middlebury Natural Foods Co-op

Hinesburgh

85. Full Moon Farm



David/Rachel Zuckerman/Nevitt | 2083 Gilman Road
 Hinesburg | 802-598-1986 | info@fullmoonfarminc.com
 fullmoonfarminc.com

PRODUCTS: Pork, poultry, assorted vegetables, melons, watermelons, eggs, flower bouquets, herbs, CBD products

AVAILABLE: Farm stand

SERVICES: 100% flexible CSA

86. Needham Family Farm

Kristin Needham | 186 Boutin Road | Hinesburg
 802-777-4439 | needhamfamilyfarm@gmavt.net

PRODUCTS: Jams and jellies, pastured chicken, eggs, lamb, asparagus and strawberries

AVAILABLE: Farm stand, Shelburne Farmers Market



WWW.DAKINFARM.COM



TWO CONVENIENT RETAIL STORES:

100 Dorset Street
 South Burlington, VT 05403

5797 Route 7
 Ferrisburgh, VT 05456

FOLLOW US @DAKINFARM_VT





87. Red Wagon Plants



Julie Rubaud | 2408 Shelburne Falls Road | Hinesburg
802-482-4060 | julie@redwagonplants.com
redwagonplants.com

PRODUCTS: Organic plants for vegetable gardens, flower beds, containers and herb gardens, herb salts and herb vinegars

AVAILABLE: Retail greenhouse open mid-April through August, website

SERVICES: Delivery of plants to area garden centers, grocery stores and hardware/feed stores

88. Rock Meadow Farm

Betsy Orvis | 2053 Texas Hill Road | Hinesburg
802-482-2247 | rockmeadowvt@gmail.com
rockmeadowvt.com

Since 2012, we have grown a wide variety of cut flowers using sustainable farming methods, available via our CSA and at retail

locations. We provide flowers for weddings/events, including DIY bulk options. Flowers seasonally available May-October.

PRODUCTS: Ecologically grown cut flowers

AVAILABLE: Lantman's Market, Trillium Hill Farmstand, Jubilee Farmstand, farm stand, farm direct

SERVICES: CSA, floral services

89. Trillium Hill Farm



James Donegan | 10643 Route 116 | Hinesburg
802-488-0283 | trilliumhills@gmail.com | trilliumhillfarm.com

We are a long time family farm with a market garden and maple sugaring operation. Maple sugaring is done in the traditional way with buckets and horses.

PRODUCTS: Organic assorted vegetables

AVAILABLE: Farm stand (open 7 days a week, April-November, daylight hours), Lantman's Grocery Store, City Market, Muddy Boots CSA

SERVICES: Spring, summer, fall, and meat CSA and farm stand shares



ORGANIC FORESTRY

Optimal Conservation for the Whole Community

www.familyforests.org

Practicing organic forestry is good for the land and it's good for the whole community—both in the forest and downstream.

In forestry, it's also often best economically to let Mother Nature take the lead—to work *with* her, not against. Visit our website to explore what organic forestry can look like in your family forest.




YOUR LOCAL, FAMILY-OWNED EQUIPMENT DEALERSHIP!

MIDDLEBURY | ST. ALBANS | DERBY | BERLIN | COLCHESTER
champlainvalleyequipment.com | 802-388-4951








90. Yates Family Orchard

Jessika Yates | 1074 Davis Road | Hinesburg | 802-373-7437
jessika@yatesfamilyorchard.com | yatesfamilyorchard.com

Enjoy 28+ varieties of apples plus peaches, plums. Visit our orchard stand for some of the very best, very local Vermont Specialty Foods and artisan works. Pick up orchard made raw cider, our jams and savory preserves, maple products and raw honey. Don't miss our hand rolled, made-to-order, hot cider donuts, Vermont made, orchard blended all natural creamees and our signature Dreamee® a hot cider donut topped with maple creamee. Check our website/social media for up to date live music and events happenings. Come, relax and enjoy time spent here!

PRODUCTS: 28+ varieties of apples, peaches and plums for PYO, Local Vermont Specialty Food products, Vermont maple products, local raw honey, orchard made raw cider, jams and savory preserves, local artisan works, hand made, hot-to-order cider donuts, Vermont made soft serve creamees, and our signature Dreamee™ a hot cider donut topped with maple creamee

AVAILABLE: Orchard direct

SERVICES: Pick your own apples

Founded in 2020, a small family farm committed to the traditional and wholesome practices of growing, raising, and otherwise producing the tastiest foods and provisions. We are proud to offer our gourmet and flavorful take on the foods you love.

PRODUCTS: Beef, poultry, pork, lamb, assorted vegetables, herbs, flowers, apples, rhubarb, eggs, baked goods, jams and jellies, oils and vinegars, pickles and ferments, wool, plants and starts

AVAILABLE: ACORN Food Hub, Middlebury Farmers Market, Rutland Farmers Market, The Farmstand Cafe & Market in Hydeville, website

SERVICES: Farm events, accepts EBT

Huntington

92. Burnt Rock Farm



Justin Rich | 7052 Main Road | Huntington | 802-434-7170
justin@burntrockfarm.com | burntrockfarm.com

PRODUCTS: Sweet potatoes, potatoes, winter squash, onions and greenhouse tomatoes

AVAILABLE: Middlebury Natural Foods Co-op, City Market in Burlington, Healthy Living in South Burlington, Farmers to You

93. Couching Lion Maple Sugar Farm

Chaska Richardson | 100 Aestivalis Hill | Huntington
802-338-1679 | couchinglionsugar@gmavt.net
couchinglionsugar.com

Small batch, wood fired maple syrup, sourced from a single forest at

Hubbardton

91. Frog Hollow Farmstead

Janis Reinke | 924 Frog Hollow Road | Hubbardton
802-468-7975 | info@froghollowvt.com | froghollowvt.com



**CO-OPERATIVE
INSURANCE
COMPANIES**

At Co-op, we're member owned and member committed. Since 1915, we've been providing protection for individuals, farms, and businesses with a large network of local agents, fast and fair claims service, loss control expertise, and affordable rates.

At the Co-op, you're a member, not just a NUMBER.

HOME • BUSINESS • AUTO • FARM

Middlebury, Vermont • (802) 388-7917

Find a local agent near you at co-opinsurance.com

Member OWNED. Member COMMITTED.



the base of Camel's Hump. Our sugarbush is sustainably managed with animal habitat in mind and is enrolled in Audubon's Bird Friendly Maple Project. Find our maple products on our website or shop at our self serve kiosk.

PRODUCTS: Maple syrup, Certified Bird Friendly per Audubon's Bird Friendly Maple Project

AVAILABLE: Farm stand, farm direct, website

94. Mountainside Maple

Jim & Gayle Rowe | 7926 Main Road | Huntington
802-434-7415 | mtnsidemaple@gmavt.net

Maple syrup producers since 1977.

PRODUCTS: Maple syrup, maple cream, maple granulated sugar

AVAILABLE: Farm direct, Pratt's Store, Prunier's Market, Kamuda's Country Market, Shelburne Market

SERVICES: Maple Open House in March each year, open daily for sugarhouse product pickup, free delivery

95. Petrichor Farm



Matthew Steinke | 502 Lincoln Hill | Huntington
802-558-1657 | petrighorfarmvt@gmail.com

petrichorfarmvt.com

PRODUCTS: Trimmed CBD flower, full spectrum extracts, full spectrum CBD balms, eggs, heirloom tomatoes

AVAILABLE: Farm stand, website

SERVICES: Farm tours

96. Pleasant Mount Farm



Heidi Racht | 4501 Main Road | Huntington | 802-434-2690
pleasantmountfarm@gmavt.net | pleasantmountfarm.com

Since 1992, a small family retail greenhouse selling annuals, potted garden plants and certified organic vegetable starts and herbs. 33rd season. Open May into July. Lovely plants for northern gardens. Over 140 varieties of tomatoes and more.

PRODUCTS: Plants and starts

AVAILABLE: Farm direct

97. Purinton Maple

Austin & Cody Purinton | Huntington | 802-434-4385
purintonmaple@gmail.com | purintonmaple.com

PRODUCTS: Maple syrup, maple equipment, Christmas trees

AVAILABLE: Healthy Living South Burlington, City Market, Kinney Drugs, Lake Champlain Chocolates Waterbury, Lawson's Finest Liquids, Commodity Market-Stowe, Vermont's Own Products, Champs Trading Post

98. RambleBramble Farm



Jamie Sky Bianco | 1340 Carse Road | Huntington
802-434-2626 | farmer@ramblebramblefarm.com
ramblebramblefarm.com

RambleBramble Farm is a 2SLGBTQIA+ and woman-owned and operated egg, chicken, sheep, goat, and vegetable farm. We raise our animals and grow crops organically and also sustainably, using compost, cover cropping and rotation.

PRODUCTS: Poultry, lamb, goat, assorted vegetables, eggs, fiber, wool, fleece, yarn

AVAILABLE: Last Resort Farm, Jubilee Farm Market

SERVICES: Breeding, farm stays

99. Tafts Milk and Maple

Mary Taft | 1470 Taft Road | Huntington | 802-434-2727
orders@vtmaplesyrup.com | vtmaplesyrup.com

PRODUCTS: Maple syrup, maple cream, granulated maple sugar

AVAILABLE: Beaudry's Store, farm direct, website

Leicester

100. Blue Ledge Farm

Hannah/Greg Sessions/Bernhardt | 2001 Old Jerusalem Road
Leicester | 802-247-0095 | info@blueledgefarm.com
blueledgefarm.com

First generation family farm established in 2000; a goat dairy and cheesemaking operation producing a full line of fresh and aged award-winning farmstead and artisan goat and cow's milk cheeses. Animal Welfare Approved farm since 2015.

PRODUCTS: Cheese

AVAILABLE: ACORN Food Hub, Farm Direct, Middlebury Natural Foods Co-op, City Market, Healthy Living, farm stand, Greg's Meat Market, website

SERVICES: Farm events, farm stays/B&Bs, educational programs

FREE ESTIMATES



**SARGENT'S
TREE
SERVICE**

- Tree Removal
- Tree Pruning
- Storm Damage Clean up
- Stump Grinding

Serving all of Addison County
Fully Licensed and Insured

Over 30 Years of Experience
802-349-7459
sargentstreeservice.com

Building a great place to Live, Work and Play



**Experience
MIDDLEBURY
VERMONT**

**BRINGING TOGETHER
FRIENDS AND NEIGHBORS**

ExperienceMiddlebury.com

Experience Middlebury is brought to you by the Better Middlebury Partnership

**101. Depot Farm Supply**

Rick Oberkirch | 2681 Leicester Whiting Road | Leicester
802-247-6700 | depotfarmsupply.com

PRODUCTS: Organic, conventional and non-GMO animal feed

AVAILABLE: Direct sales and delivery

102. Foxglove Farm

Catherine Raishart | Leicester | 802-345-3708
catherine.raishart@gmail.com | foxglovesfarmvt.com

High quality unique cut flowers and maple syrup. Certified Bird Friendly Habitat.

PRODUCTS: Flowers, maple syrup, wreaths

AVAILABLE: ACORN Food Hub, farm stand, Middlebury Farmers Market, website

SERVICES: Farm stays/B&Bs, farm tours, summer and fall CSA

103. Mt. Pleasant Sugarworks

Andy, Donna & Cody Hutchison | 2668 U.S. Route 7
Leicester | 802-247-3117 | mountpleasantmaple@gmail.com
mountpleasantmaple.com

Maple syrup producers since 1988. Retail shop selling maple products. Maple equipment sales since 1996.

PRODUCTS: Maple syrup

AVAILABLE: Farm stand, Brandon Farmers Market

104. Oliver Hill Farm

Suki Fredericks | 1033 Bullock Road | Leicester
802-247-3479 | spfspf@gmail.com
airbnb.com/rooms/720709

PRODUCTS: Free-range eggs, hay

AVAILABLE: Farm direct, please call

SERVICES: Farm stays/B&B, guest house on the farm

105. Summer's Gale Farm

James/Lesley Ellefson/Wright | 588 Fern Lake Road | Leicester
802-247-5920 | cehp@gmavt.net

PRODUCTS: Vegetables, garlic, pumpkins, and eggs

AVAILABLE: Farm direct

106. Taconic End Farm

Annie Claghorn | 1395 Leicester Whiting Road | Leicester
802-247-3979

Dairy farm with registered Jerseys. Founded 1987 by Catlin Fox and Annie Claghorn. Seasonal, long time rotational grazing practiced.

PRODUCTS: Beef

AVAILABLE: Farm direct

Lincoln

107. Hidden Mountain Maple

Christopher/Carol Johnson/Boyd | 480 Green Road North
Lincoln | 802-453-8324 | vermontjobs@gmail.com
hiddenmtmaple.com

PRODUCTS: Maple syrup

AVAILABLE: Online, farm stand

108. Isham Brook Farm

William Roleau | 1426 W. River Road | Lincoln
802-453-3713

PRODUCTS: Beef, pork, retail cuts, maple syrup, honey

AVAILABLE: Farm direct, Lincoln Store, Bristol Beverage

109. Meetinghouse Farm

Ruth Shepherd | 192 Isham Hollow | Lincoln | 802-453-4786
mhfarm@gmavt.net

A multigenerational family farm started in 1982, we raise rotationally raised red angus beef and lamb. Virtually all of our livestock are born and raised on our farm to ensure that you receive the highest quality, humanely raised meat products.

PRODUCTS: Beef, lamb, wool, hay

AVAILABLE: Farm direct and Middlebury Natural Foods Co-op

SERVICES: Sale of breeding stock to other growers

110. Metta Earth Institute, Inc. & Metta Earth Farm, LLC

Gillian & Russell Comstock | 334 Geary Road S | Lincoln
802-453-8111 | info@mettaearth.org | mettaearth.org

Metta Earth is a cultural renewal project integrating holistic education,

ELMER FARM

QUALITY. COMMUNITY. CONNECTION.



PROUDLY SERVING ADDISON COUNTY

FARMHOUSE**CHOCOLATES**

25B Mountain View St. farmhousechocolates.com

hand crafted
chocolates

made in

Bristol, VT

with

organic, fair trade
& local ingredients

visit us to slow
down & light up



contemplative practice, deep ecology, and organic, regenerative food systems to create resilient community.

PRODUCTS: Herbal tea blends, herbal salts, varieties of produce

AVAILABLE: Farm direct

SERVICES: Individual and group retreats, leadership trainings, yoga/meditation programs and re-skilling workshops

111. Solar Sweet Maple Farm

Tom & Rhonda Gadhue | 3841 S. Lincoln Road | Lincoln
info@solarsweetmaplefarm.com

PRODUCTS: Maple syrup, maple cream, maple glazed walnuts, maple balsamic dressing, maple candy

AVAILABLE: Farm direct, website

SERVICES: Annual pancake breakfast in March

112. Sweetgrass Herbals

Emily French | 2908 Ripton Road | Lincoln
emily@sweetgrassherbals.com | sweetgrassherbals.com

PRODUCTS: Consultations

SERVICES: Wellness consultations, classes & workshops

113. Twin Maple Sugarworks



Don Gale | 88 W. River Road | Lincoln
802-453-2785, 802-989-3293 | twinmaplesugarworksvt.com

PRODUCTS: Maple syrup in various grades, maple cream, maple sugar, maple glazed nuts, Maple Halvah, and Tree Heat

AVAILABLE: Sugarhouse Direct, Middlebury Farmers Market, website

Middlebury

114. Appalachian Gap Distillery

88 Mainelli Road | Middlebury | 802-989-7362
info@appgap.com | appalachiangap.com

From our solar-powered distillery, we are handcrafting a line of delicious, unique spirits that will delight the senses. Rye whiskey grains are 100% local. As many of our ingredients are grown as locally as practicable.

PRODUCTS: Spirits: whiskey, gin, liqueur, specialty spirits

AVAILABLE: Distillery Tasting Room, Vermont Liquor Outlets, website

115. Champlain Valley Apiaries

Curtis Mraz | 504 Washington Street Ext. | Middlebury

802-388-7724 | curtis@champlainvalleyhoney.com
champlainvalleyhoney.com

Champlain Valley Apiaries is a 4th generation Vermont family owned business. Founded in 1931 by historic beekeeper Charles Mraz, we have been producing delicious Vermont honey for over 90 years.

PRODUCTS: Honey

AVAILABLE: Healthy Living, Vermont's Own Gifts & Goods, City Market, Farm Direct, Middlebury Natural Foods Co-op, Greg's Meat Market, website

116. Champlain Valley Creamery



Carleton Yoder | 88 Mainelli Road, Ste. 3 | Middlebury
802-989-7361 | cheeseguy@cvccream.com | cvcream.com

PRODUCTS: Old Fashioned Organic Cream Cheese, Champlain Triple, Pyramid Scheme, Champlain Truffle Triple, Organic Queso Fresco, Pepper Queso, Organic Smoked Queso, Bleu de Champlain

AVAILABLE: Middlebury Natural Foods Co-op, City Market, Healthy Living, Shelburne Market, American Flatbread

117. Dancing Bee Gardens

Ross Conrad | 609 Burnham Drive | Middlebury
802-349-4279 | dancingbhoney@gmail.com
dancingbeegardens.com

Dancing Bee Gardens is a small-scale artisanal operation specializing in raw unheated and unfiltered honey, and other hive products.

Located entirely in Addison County, all bee colonies are managed without using antibiotics or synthetic chemicals.

PRODUCTS: Raw honey, beeswax candles, herbal salve, propolis tincture

AVAILABLE: Farm Direct, ACORN Food Hub

SERVICES: Educational programs

118. Elmer Farm



Spencer & Jennifer Blackwell | 855 Case Street | Middlebury
802-377-8195 | elmer.farm@yahoo.com

Elmer Farm is a certified organic vegetable farm serving Addison County since 2008. A wide variety of vegetables are sold on the farm CSA, local restaurants and stores within Addison County.

PRODUCTS: Assorted vegetables, sweet corn, herbs, flowers

AVAILABLE: ACORN Food Hub, Middlebury Natural Foods Co-op

SERVICES: CSA, pick your own cut flowers and vegetables (CSA members only)



Serving people since 1955.

A representative of Cooperative Insurance Companies of Middlebury, Vermont.

labergeinsurance.com

1 Washington Street, Middlebury, VT • 802-388-2772





119. Deep Roots Farm and The Garden Patch at Hannaford Career Center

Kelley Mills | Deep Roots Farm: 372 Mainelli Road, The Garden Patch: 51 Charles Avenue | Middlebury
802-382-1012 | kmills@pahcc.org | hannafordcareercenter.org

Deep Roots Farm and The Garden Patch are student managed agribusinesses at the Patricia A. Hannaford Career Center. The Garden patch sells veggie starts, hanging baskets, and bedding plants.

PRODUCTS: Goat meat, chicken eggs, herbs, veggie starts, hanging baskets, and bedding plants

AVAILABLE: Shelburne Farmers Market in association with Smith Family Farm

SERVICES: Educational programs

120. Golden Rule Brewing

Alexandre Apfel | 8 Elm Street | Middlebury | 719-216-2911
aapfel@goldenrulebrew.com | goldenrulebrew.com

We produce a wide variety of dry, gently carbonated meads using real, locally sourced ingredients and wild mixed cultures. You can find them in bottles around the state and at our Middlebury tasting room, where we offer an affordable tasting series.

PRODUCTS: Mead (honey-based wine)

AVAILABLE: Healthy Living, City Market, Middlebury Natural Foods Co-op, specialty beer and wine shops, Middlebury Discount Beverage, Rutland Farmer's Market

121. Happy Valley Orchard

217 Quarry Road | Middlebury | 802-388-2411
happyvalleyorchard.com

PRODUCTS: Vegetables, apples, cider, berries, peaches, cider donuts, baked goods

AVAILABLE: Farm stand

SERVICES: Pick your own

122. LedgeEnd Farm

Hank Dimuzio | 1288 Munger Street | Middlebury
802-388-8979 | ledgendeer@comcast.net | ledgendfarm.com

Established in 1991, LedgeEnd farm is a 420 acre Vermont Land Trust conserved farm selling quality Fallow Deer venison year-round, farm direct and in local stores and restaurants. We also sell antlers for your pet's chewing pleasure.

PRODUCTS: Venison, antler pet chews

AVAILABLE: Middlebury Natural Foods Co-op, Healthy Living, Greg's Meat Market, Lantman's Market, farm direct, City Market

123. Limeridge Sugar Works

Wesley Butler | | Middlebury | 802-458-1666
limeridgesw@gmail.com

Limeridge Sugarworks was born as an evolving journey to find a personal balance between agriculture and ecosystem stewardship. Our current focus is small scale maple syrup as well as raw honey production using organic beekeeping methods.

PRODUCTS: Maple, raw honey

AVAILABLE: ACORN Food Hub, farm direct, farmstand at The Hart Homestead, 1579 Halpin Road, New Haven

124. Marble Rose Farm

Thomas Kruk | 1733 Case Street | Middlebury
802-388-9411 | marblerosefarm@comcast.net

U-pick strawberries and mixed veggies

PRODUCTS: Assorted vegetables, herbs, melons, peaches, pears, raspberries, strawberries, Christmas trees, wreaths and baskets, asparagus

AVAILABLE: Farm stand

SERVICES: Pick your own strawberries

125. Middlebury Community Gardens

Porter Medical Center | Middlebury
info@middleburygardens.org | middleburygardens.org

PRODUCTS: Community garden plots

126. Omar's Uncommon Fruits

Omar Fugaro | 488 E. Munger Street | Middlebury
802-282-6739 | omarfooge@yahoo.com

Unusual fruits and berries grown with passion. Constant experimentation with trying new things keeps my work exciting, interesting and satisfying.

PRODUCTS: Cantaloupe, melons, pears, plums, blackberries, raspberries, strawberries, gooseberries, mulberries and currants

AVAILABLE: Middlebury Farmers Market, Middlebury Natural Foods Co-op, farm direct by appointment

SERVICES: Pick your own raspberries and currants, can call and make an appointment to pick other products available

FROG HOLLOW FARMSTEAD

THE FARM STAND
CAFE • MARKET

from our FARM, to your FORK

HUBBARDTON • HYDEVILLE
802-468-7975 802-468-7150
www.froghollowvt.com



Map Key

Addison

- 1 Harrison's Homegrown
- 2 Harwood Farm
- 3 Mike's Farm
- 4 West Addison Acres

Benson

- 5 Cobble Knoll Orchard
- 6 Falkenbury Farm
- 7 Little Sister Farm
- 8 Maple Ridge Meats
- 9 The Bur-Ger Farm
- 10 Vermont Natural Beef

Brandon

- 11 Country Blossoms Honey
- 12 Funk's Farmin'
- 13 Hamilton Cattle Company
- 14 Little Pond Goat Farm
- 15 Foley Brothers Brewing
- 16 Renaissance Farm
- 17 Spotted Dog Family Farm
- 18 Wood's Market Garden

Bridport

- 19 Bridport Creamery
- 20 Champlain Valley Alpacas at The Vermont Wedding Barn
- 21 Hemenway Hillbillies/Myrick Maple Works
- 22 Little Ditty Farm
- 23 Long Cloud Farm
- 24 Morgan Hill Farm
- 25 Shallow Rock Farm
- 26 Understory Farm

Bristol

- 27 BCC Botanicals
- 28 Bristol Community Gardens
- 29 Emerald Rose Grows
- 30 Farmhouse Chocolates
- 31 Firefly Fields
- 32 Four Blooms Farm
- 33 Gateway Farm
- 34 Hogback Mountain Brewing
- 35 Little Hogback Farm
- 36 Lower Notch Farm
- 37 Mayer Maple Producers
- 38 Norm Booska
- 39 savouré soda
- 40 V Smiley Preserves
- 41 Wild Roots Farm
- 42 Yore Fare Farm

Charlotte

- 43 Adam's Berry Farm
- 44 Allen Family Maple
- 45 Charlotte Village Winery
- 46 Fat Cow Farm
- 47 Golden Apple Family Farm
- 48 Grass Cattle Company
- 49 Greylaine Farm
- 50 Hands and Heart Farm
- 51 Head Over Fields
- 52 High Hedge Farm

- 53 Horsford Gardens and Nursery
- 54 Nitty Gritty Grain Co. of Vermont
- 55 Pelkey's Blueberries
- 56 Plum Hill Farm
- 57 Rise 'n Shine
- 58 Sobremesa
- 59 Stony Loam Farm
- 60 Sweet Roots Farm

Cornwall

- 61 Birdsong Herb Farm
- 62 Bread Loaf View Farm
- 63 Cutting Hill Beef
- 64 The Knoll
- 65 Lemon Fair Honey Works
- 66 Rowe Crest Farm
- 67 Sunrise Orchards
- 68 Twig Farm
- 69 Williams Farm Maple
- 70 Windfall Orchard

Ferrisburgh

- 71 Dakin Farm
- 72 Dream in Color
- 73 Earth House Farm
- 74 Fern Bridge Farm
- 75 Flowerpower VT
- 76 Fuller Mountain Farm
- 77 LaLumiere Farm and Greenhouse
- 78 Scott's Greenbush Gardens
- 79 Van De Weert Farmstead
- 80 Vermont Livestock Slaughter and Processing Co.

Goshen

- 81 Ice House Farm
- 82 Republic of Vermont

Granville

- 83 Clearfield Farm
- 84 Old Road Farm

Hinesburg

- 85 Full Moon Farm
- 86 Needham Family Farm
- 87 Red Wagon Plants
- 88 Rock Meadow Farm
- 89 Trillium Hill Farm
- 90 Yates Family Orchard

Hubbardton

- 91 Frog Hollow Farmstead

Huntington

- 92 Burnt Rock Farm
- 93 Couching Lion Maple Sugar Farm
- 94 Mountainside Maple
- 95 Petrarch Farm
- 96 Pleasant Mount Farm
- 97 Purinton Maple
- 98 RambleBramble Farm
- 99 Tafts Milk and Maple

Leicester

- 100 Blue Ledge Farm

- 101 Depot Farm Supply
- 102 Foxglove Farm
- 103 Mt. Pleasant Sugarworks
- 104 Oliver Hill Farm
- 105 Summer's Gale Farm
- 106 Taconic End Farm

Lincoln

- 107 Hidden Mountain Maple
- 108 Isham Brook Farm
- 109 Meetinghouse Farm
- 110 Metta Earth Institute, Inc. & Metta Earth Farm, LLC
- 111 Solar Sweet Maple Farm
- 112 Sweetgrass Herbals
- 113 Twin Maple Sugarworks

Middlebury

- 114 Appalachian Gap Distillery
- 115 Champlain Valley Apiaries
- 116 Champlain Valley Creamery
- 117 Dancing Bee Gardens
- 118 Elmer Farm
- 119 Deep Roots Farm and The Garden Patch at Hannaford Career Center
- 120 Golden Rule Brewing
- 121 Happy Valley Orchard
- 122 Ledge Farm
- 123 Limeridge Sugar Works
- 124 Marble Rose Farm
- 125 Middlebury Community Gardens
- 126 Omar's Uncommon Fruits
- 127 Tail Feather Farm
- 128 Vermont Natural Ag Products
- 129 Werner Tree Farm

Middletown Springs

- 130 Naga Bakehouse

Monkton

- 131 Boro Hill Nursery
- 132 Stine Orchard
- 133 Full Belly Farm
- 134 Last Resort Farm
- 135 Layn Farms
- 136 Monkton Ridge Orchard
- 137 New Leaf Organics
- 138 Vermont Vinegars
- 139 Willowell Community Garden

New Haven

- 140 Buck Mountain Maple Farm
- 141 Champlain Valley Bees and Queens
- 142 Dog Team Farm
- 143 Field of Dreams
- 144 Greenhaven Gardens
- 145 Green Mountain Longhorns
- 146 The Hart Homestead
- 147 Kayhart's Homegrown Beef
- 148 Lincoln Peak Vineyard
- 149 Misty Knoll Farms

- 150 Smith Family Farm
- 151 Sweet Hill Farm
- 152 Vermont Cheeseless
- 153 Valley Clayplain Forest Farm
- 154 Wild Winds Farm

N. Chittenden

- 155 Baird Farm Maple Syrup

Orwell

- 156 Berry Meadow Farm
- 157 Champlain Valley Mushrooms
- 158 Danz Ahn Dairy
- 159 Lazy Dog Farm
- 160 Ledge Haven Farm
- 161 Lucas Family Farms
- 162 Red Sky Farm
- 163 Singing Cedars Farmstead
- 164 Stonewood Farm Inc
- 165 Sylvan Shades Farm
- 166 Tup's Crossing Farm LLC
- 167 Yankee Rock Farm

Panton

- 168 Agricola Farm
- 169 Farmhouse Table
- 170 Jackson Hill Gardens
- 171 Wiggly Goat Farm

Pawlet

- 172 Laughing Child Farm

Pittsford

- 173 Gagnon Lumber
- 174 VT Terps Cannabis

Richmond

- 175 Farr Farm
- 176 Maple Wind Farm

Ripton

- 177 High Rows Vineyards
- 178 Mountaintop Farm
- 179 Nola's Secret Garden

Rochester

- 180 Kismet Farm
- 181 North Hollow Farm
- 182 Sunshine Valley Berry Farm
- 183 Uphill Farm

Salisbury

- 184 Maple Meadow Farm

Shelburne

- 185 Bread & Butter Farm
- 186 Farm Craft VT
- 187 Killeen Crossroads Farm
- 188 New Village Farm
- 189 O Bread Bakery
- 190 Shelburne Farms
- 191 Shelburne Sugarworks
- 192 Shelburne Vineyard
- 193 Sisters of Anarchy Ice Cream
- 194 Vermont Tortilla Company

Shoreham

- 195 Champlain Orchards
- 196 Cousineau Cattle Co.
- 197 Daona Farm American

- Waygu Beef
- 198 Elysian Fields
- 199 Golden Russet Farm
- 200 Lakeview Leicesters
- 201 Rolling Bale Farm and Animal Farm Creamery
- 202 Vermont Trade Winds Farm
- 203 WhistlePig Farm
- 204 Work and Days Farm

Shrewsbury

- 205 Stone's Throw Farmstead

South Burlington

- 206 The Simmering Bone
- 207 FUNJ Shrooming Company

Starksboro

- 208 Bee Happy Vermont
- 209 Bending Birch Homestead
- 210 Champlain Valley Hops
- 211 Dunham Family Maple
- 212 Flatlander Farm
- 213 Footprint Farm
- 214 Hillsboro Sugarworks
- 215 Lewis Creek Farm
- 216 Maggie Brook Sugarworks
- 217 Norris Sugarworks
- 218 Red Rock Valley Maple Farm
- 219 Russell Farm
- 220 Sentinel Farms
- 221 Shaker Maple Farm
- 222 Shaker Mountain Farm
- 223 Shangrila Farm
- 224 Upstream Sugarworks
- 225 Vierra Farms

Sudbury

- 226 Green & Gold CSA
- 227 Miller Hill Farm Nursery and Gardens
- 228 Rup's Custom Cutting and Smoking
- 229 The Stevens Farmstead

Vergennes

- 230 Boundbrook Farm
- 231 Diddle & Zen
- 232 Lost Lantern Whiskey
- 233 Lu.Lu Artisan Ice Cream
- 234 Shacksbury Cider
- 235 Treleven
- 236 Vermont Pure CBD
- 237 Woodman Hill Orchard

Weybridge

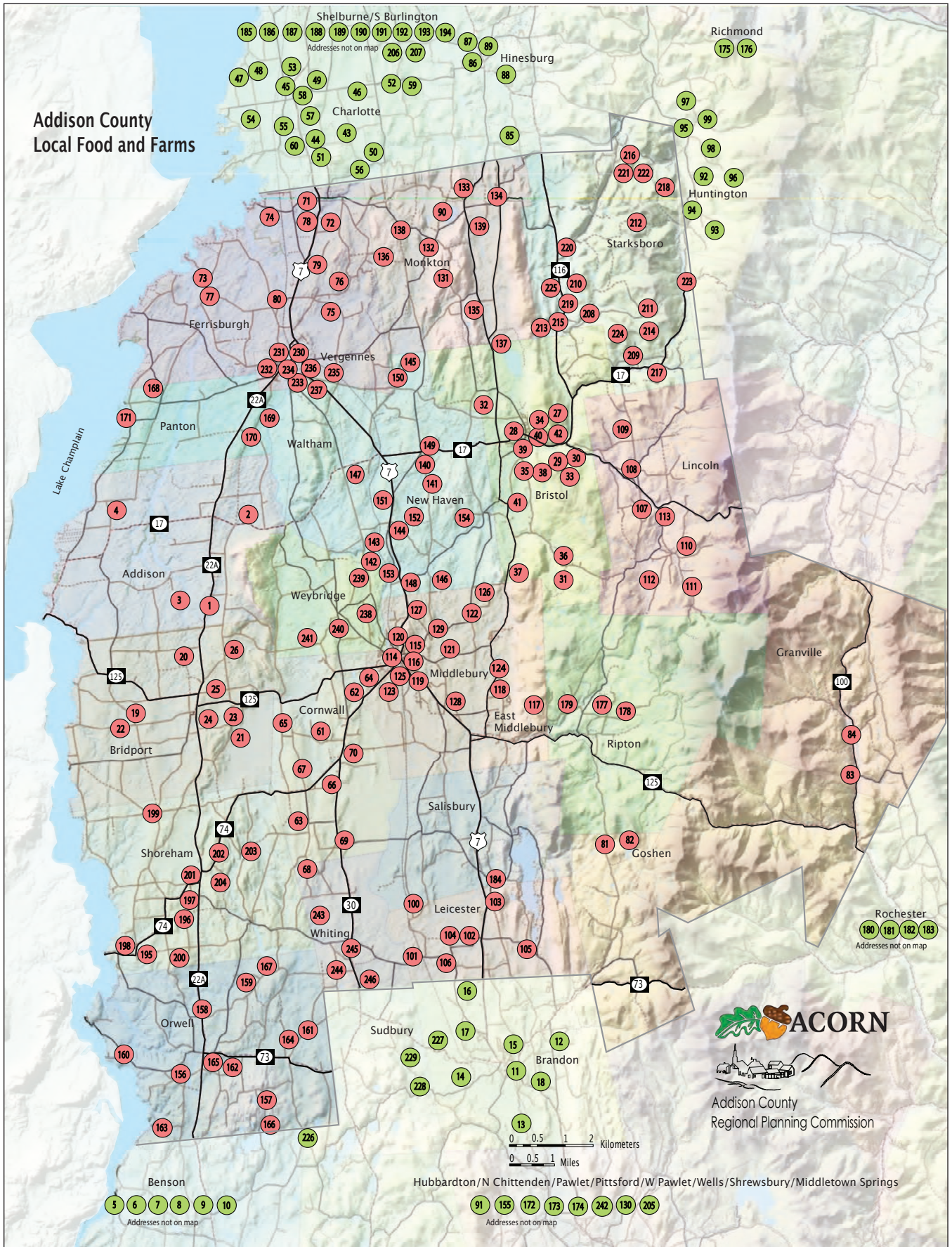
- 238 Dudos and Thompson Farm
- 239 Ledge Hill Farm
- 240 Monument Farms
- 241 Weybridge Farm

Wells

- 242 Larson Farm and Creamery

Whiting

- 243 Corner OAKK Farm
- 244 Fast Hitch Farm
- 245 Fowlers
- 246 MoSe Farm





127. Tail Feather Farm

Jennifer Kennett | 1740 Route 7 N. | Middlebury
802-683-6436 | tailfeatherfarm6@gmail.com
tailfeatherfarm.com

PRODUCTS: Grass-grazed, humane-raised, grain-finished beef

AVAILABLE: Farm stand

SERVICES: Farm education, farm camps, horse boarding, riding lessons, therapeutic riding, gymkhana, and training

128. Vermont Natural Ag Products

Tricia Foster | 297 Lower Foote Street | Middlebury
802-388-1137 | tfmoodoo@sover.net | moodoo.com

We sell bulk composted cow manure, topsoil, and bark mulch at our facility in Middlebury. Our bagged goods (Moo and Foster Brothers) can be purchased at independent garden centers throughout New England and New York. We've been selling compost since 1992.

PRODUCTS: Bagged and bulk compost

AVAILABLE: Local garden centers, bulk sold directly from facility

129. Werner Tree Farm

Cheryl Werner | 429 Painter Road | Middlebury
802-388-7781 | wernertreefarm@yahoo.com
wernertreefarm.com

We're a small, family-owned tree farm, selling trees for 40 years. We produce yarn & lamb from Shropshire sheep that graze the trees for weed control. We believe that farming should improve the local environment through smart farming choices.

PRODUCTS: Lamb, wool, fleece, roving, Christmas trees, wreaths and baskets, honey, maple syrup, chocolate maple syrup, and maple cream

AVAILABLE: Middlebury Natural Foods Co-op, farm direct

Middletown Springs

130. Naga Bakehouse

Julie/Doug Sperling/Freilich | Middletown Springs
802-235-1282 | nagabakehouse@gmail.com
nagabakehouse.com

Naga Bakehouse is a wood-fired bakery, gristmill and micro-farm in the hills of southwestern Vermont. Naga stands for (NA)tural (G)rain (A)lchemy; and is the magic of changing something simple into something special. We create „ÄGood Food,Ä to regenerate the land and to reinvigorate our rural economy.

PRODUCTS: Freshly baked wood-fired breads at farmers' markets and festivals, seasonally; small-batch, freshly milled, flours and grains

AVAILABLE: ACORN Food Hub

Monkton

131. Boro Hill Nursery

Chris Urban | 995 Monkton-Vergennes Road | Monkton
borohillnursery@gmail.com | borohillnursery.com

Superior cultivars of hardy Vermont-grown fruit, shade and ornamental trees.



Farm Credit East is deeply rooted in our customers' success – and Northeast agriculture. In fact, no one knows ag quite as well as Farm Credit East. So if you're looking for financing or business services for your agricultural operation – of any size or type – look to Farm Credit East. **Our mission is to grow your success.**

FARMCREDITEAST.COM
800.562.2235

Loans and Leases
Tax Services
Payroll Services
Business Consulting
Record-keeping
Country Home Loans
FarmStart for New Businesses
Real Estate and Equipment Appraisals





PRODUCTS: Fruit, shade, and ornamental trees

AVAILABLE: Nursery direct

SERVICES: Consultation and design; delivery and installation and seasonal pruning

132. Stine Orchard

Aaron and Kathleen Stine | 1823 Monkton Road | Monkton | 802-453-2676 | stineorchard@gmail.com | stineorchard.com

PRODUCTS: Apples, pears, plums, cider, pies, donuts, wine & hard cider

AVAILABLE: Orchard direct

SERVICES: Pick your own

133. Full Belly Farm

Stephen Park | 686 Davis Road | Monkton | 802-453-3793
fullbellyfarmvt@gmail.com | fullbellyfarmvt.com

PRODUCTS: Strawberries, blueberries, raspberries, tomatoes, sweet corn, seasonal vegetables, bedding plants & flowers

AVAILABLE: Farm stand, City Market, Shelburne Supermarket

SERVICES: Pick your own strawberries, raspberries, blueberries, cut-your-own flowers



134. Last Resort Farm

Silas Doyle-Burr | 2246 Tyler Bridge Road | Monkton | 802-453-2847 | silas@lastresortfarm.com | lastresortfarm.com

Last Resort Farm is a multigenerational family owned farm growing a diverse mix of certified organic berries, vegetables, maple syrup, hay and straw.

PRODUCTS: Assorted vegetables, sweet corn, herbs, flowers, blackberries, blueberries, currants, raspberries, strawberries, soda, jams and jellies, pickles and ferments, hay, honey, maple syrup

AVAILABLE: City Market, Healthy Living, Richmond Farmers Market, Winooski Farmers Market, pop-up across from Burlington Farmers Market, farm stand

SERVICES: Farm share program, pick your own, accepts EBT

135. Layn Farms

Heather Layn | 3984 Bristol Road | Monkton | 802-355-0178
heatherlayn802@outlook.com

Layn Farms is a fifth generation farm. Also, a certified Homegrown-By-Heroes farm. We have been diversifying since we stopped milking and have a wide range of products.

PRODUCTS: Beef, pork, turkey, chicken, eggs, LedgEnd farm venison, honey, maple products, yarn, felt items, shell corn, cracked corn, soybeans, wheat, oats, rye, chicken scratch, hay, straw, sweet corn, pumpkins, Christmas tree's, + more to come!

AVAILABLE: Farm stand, Isham Family Farmers Market, Bristol Discount Beverage, Village Green Market

SERVICES: Monthly meat box, farm visits

136. Monkton Ridge Orchard

Christine & Charles LaFreniere | 79 Rotax Road
Monkton | 802-318-3785 | christinelee.laf@gmail.com
monktonridgeorchard.com

Monkton Ridge Orchard, a small, family run business with PYO and pre-picked apples. apple stand includes an assortment of products:

Free In-Town Shuttle & Wi-Fi!

nokian TYRES **BRIDGESTONE Firestone**

You're Under Car Care Specialists

Qualified Hybrid & Electric Service

Brakes • Exhaust • Oil Changes
Engine Diagnostics & Repair
Preventive Maintenance • Tires
Alignments • and More

802-388-7620 MON-Fri 8-5
countytirecenter.com
**33 SEYMOUR ST.,
MIDDLEBURY**

FROM THE LAND

FOR THE LAND

GRASSFED & FINISHED BEEF

VISIT OUR RANCHSTAND STEAKSHOP

1677 HINESBURG ROAD, CHARLOTTE, VERMONT
FREE DELIVERY TO ADDISON COUNTY
WWW.GRASSCATTLECOMPANY.COM

ADDISON COUNTY
Economic Development Corporation
Great starts here.

Starting or growing a business?
**ACEDC is here to provide assistance,
advice, and access to capital.**

Launch
Grow
Thrive

AddisonCountyEDC.org • 802-388-7953



hand made cider donuts, fresh pressed cider, hand pies, cookies, cheese and honey. Hand painted Barm quilts for sale.

PRODUCTS: Flowers, peaches, apples, baked goods, sweet cider, jams and jellies, honey

AVAILABLE: Farm stand

SERVICES: Pick your own apples

137. New Leaf Organics



Jill Kopel | 4818 Bristol Road | Monkton | 802-349-7369
newleaf@gmavt.net | newleaforganics.org

Farming here since 2002, we grow five acres of certified organic vegetables and flowers. We sell all of our produce within a 50 mile range. Our flowers are used all season long at weddings and events around Vermont.

PRODUCTS: Assorted vegetables, herbs, flowers, blueberries, peaches, pears, plums, raspberries, strawberries

AVAILABLE: ACORN Food Hub, Middlebury Natural Foods Co-op, farm direct, online market

SERVICES: Farm events, farm stays/B&Bs, floral services, pick your own flowers

138. Vermont Vinegars

Debra Boyer | 42 Meader Road | Monkton | 802-989-9645
debb@vtvinegars.com | vtvinegars.com

Artisan made vinegar, vinaigrette, infusions, marinades, reductions locally focused on what Vermont growers do so well.

PRODUCTS: Oil, vinegar



Last Resort Farm

2246 TYLER BRIDGE RD
MONKTON, VERMONT

Family-owned organic farm,
proudly serving Vermont communities.

ORGANIC BERRIES, VEGGIES, & HAY

802-453-2847
LastResortFarm.com



AVAILABLE: Farm stand, Middlebury Natural Foods Co-op, Healthy Living, City Market, Vermont's Own Gifts & Goods, website

139. Willowell Community Garden

Tasha Ball | Bristol Road | Monkton | 802-453-6195
info@willowell.org | willowell.org

The Willowell Foundation is dedicated to supporting local and global initiatives for sustainable ecological land use, and to serve as a resource for area students, teachers and community members. We run programs that integrate the sciences, arts and humanities into place-based and outdoors education for ages 3-18.

PRODUCTS: Assorted vegetables

AVAILABLE: Farm to school, donations to food shelves

SERVICES: Farm tours, educational programs, fun for kids

New Haven

140. Buck Mountain Maple Farm

Tim & Kristine Bouvier | 3796 Green Street | New Haven
802-349-8161 | Buckmtnmaple@gmail.com
buckmtnmaplefarm.com

PRODUCTS: Maple syrup and products: maple cream, granulated maple sugar, maple pecans and maple walnuts

AVAILABLE: Direct sales

141. Champlain Valley Bees and Queens

Kirk Webster | 1437 South Street | New Haven | 802-989-5895
30# pails raw honey available in the fall. Reserve before September.

PRODUCTS: Honey, nucleus colonies

AVAILABLE: Farm Direct

142. Dog Team Farm

Rachel Smith | 933 Dog Team Road | New Haven
802-448-0787 | pinuppickles@gmail.com | pinuppickles.com

We offer flower bouquets, handmade pottery, vegetable plant starts, houseplants, as well as used books! All available at our self-service farm stand. (Seasonally May-October)

PRODUCTS: Assorted vegetables, herbs, flowers, plants and starts

AVAILABLE: Self-serve farm stand

143. Field of Dreams

Chuck King | 370 Dallinger Road | New Haven
802-388-4174 | rhythmreed@madriver.com |

PRODUCTS: Nigerian dwarf goats, dog breeding

AVAILABLE: Farm direct

144. Greenhaven Gardens

Danielle Norris | 2638 Ethan Allen Hwy. | New Haven
802-453-5382 | plants@greenhavenvt.com
greenhavengardensandnursery.com

Addison County's Largest Full Service Garden Center!

PRODUCTS: Veggie, annual, and perennial plants, trees & nursery stock, veg & flower seeds

AVAILABLE: Retail shop

SERVICES: Landscaping



145. Green Mountain Longhorns

Ben Osicky | 3406 Lime Kiln Road | New Haven
802-349-9960

We formed our LLC in 2024 for the love of Texas Longhorns. What started as a hobby raising Texas Longhorns has now become a small business providing lean, grass-fed Longhorn beef to the community and select nearby restaurants.

PRODUCTS: Beef, poultry, rabbit, eggs, pelts

AVAILABLE: City Market, farm direct

146. The Hart Homestead

Shannon Hart | 1579 Halpin Road | New Haven
802-989-0943 | theharthomestead.vt@gmail.com
theharthomestead.com

We're a small but mighty homestead. We have some fabulous pigs, plentiful laying hens, and our jersey milk cows. Our garden and orchard grow every year, as well as our knowledge of them. We have a year round farm stand open daily 8am - 8pm.

PRODUCTS: Pork, beef, assorted vegetables, herbs, flowers, rhubarb, eggs, jams and jellies, dehydrated sourdough starter

AVAILABLE: Farm stand

SERVICES: Breeding stock

147. Kayhart's Homegrown Beef

Brian and Cindy Kayhart | 4188 Otter Creek Hwy. | New Haven
802-545- 2484 | kayhartshomegrown@gmail.com
kayhartmeats.weebly.com

We have beef and pork including linked sausages, bacon, and ham. Eggs and maple syrup that we make "the old fashioned way." We are open 7-7 every day!

PRODUCTS: Beef, pork, lamb, sweet corn, eggs, maple syrup

AVAILABLE: Farm stand

148. Lincoln Peak Vineyard

Nichole & Kevin Bambacigno & Bednar | 142 River Road
New Haven | 802-388-7368
hello@lincolnpeakvineyard.com | lincolnpeakvineyard.com

Located just north of Middlebury, Lincoln Peak Vineyard regeneratively farms 7 acres of cold-hardy vines and makes award-winning, estate-grown wines. Founded in the early 2000s Lincoln Peak has a rich history as one of Vermont's cornerstone wineries.

New owners Kevin and Nichole bring more than a decade of global winemaking experience back to their home state to craft wines with intensity, complexity, beauty, and sense of place.

PRODUCTS: Wine and Cider made from our estate or sourced from neighboring farms

AVAILABLE: The Local, The Beverage Warehouse, Village Wine Shop, Hare and the Dog, Mad River Taste Place

SERVICES: Tasting room

149. Misty Knoll Farms

1685 Main Street | New Haven | 802-453-4748
mistyknollfarm@gmavt.net | mistyknollfarms.com

PRODUCTS: Turkeys, chickens, retail cuts

AVAILABLE: Middlebury Natural Foods Co-op, most natural food stores, farm direct Tuesday (Preorder Monday by Noon)

150. Smith Family Farm

Harvey, Donna and AnnaJo Smith | 2516 Lime Kiln Road
New Haven | 802-349-0284 | smithfamilymeats.com

We are a multi-generational family farm raising our animals through sustainable practices like rotational grazing.

PRODUCTS: Grass-fed beef, natural pork & lamb, poultry, retail cuts and wholesale

AVAILABLE: ACORN Food Hub, farm direct, deliveries, website, Vergennes Farmers Market, Shelburne Farmers Market and Winooski Farmers Market

151. Sweet Hill Farm

Chris, Dianne & Chelsea Bingham | 3835 Ethan Allen Highway
New Haven | 802-453-7751 | sweetcorn@gmavt.net

Sweet corn is our specialty at Sweet Hill Farm. Open Tuesday through Sunday from mid-July to end of October.

PRODUCTS: Sweet corn, tomatoes, cucumbers, summer squash, sunflowers, zinnias, garlic, potatoes, winter squash, pumpkins, gourds and ornamental corn

AVAILABLE: Farm stand

152. Vermont Cheeseless

Erin Shea | New Haven | 802-272-3829
info@vermontcheeseless.com | vermontcheeseless.com

Vermont Cheeseless is a gluten and dairy free, nut-based frozen dessert company. We only use ingredients you can pronounce

THE FIRST NATIONAL BANK OF ORWELL

100% of deposits are put to work in local loans.
Invested in our neighbors since 1863.

Main Street, Orwell
(802) 948-2811

Route 22A, Shoreham
(802) 897-2265

Personal Service. Truly Local Banking.

Equal Housing Lender

www.fnborwell.com

Member FDIC





including local fruit, tofu, maple products and absolutely no refined sugars. Woman and family owned.

PRODUCTS: Vegan and gluten free frozen cheesecake

AVAILABLE: ACORN Food Hub, Farm stand, Healthy Living, City Market, Farm Direct, Middlebury Natural Food Co-op, Middlebury Farmers Market, Shelburne farmers market, Lincoln Store, Lantmans market

SERVICES: Offers EBT / 3 Squares Vermont

153. Valley Clayplain Forest Farm

Mark Krawczyk | 37 Kelton Drive | New Haven

802-999-2768 | valleyclayplain@gmail.com

valleyclayplain.com

We are an agroforestry-based farm on route 7 in New Haven focused

on the intersection of farming and forestry. Since 2012, we've planted nearly 100 species of trees & shrubs for conservation, production, and to nourish and inspire our community.

PRODUCTS: Log grown shiitake, oyster mushrooms, lion's mane mushrooms, assorted vegetables, plum, pears, currants, herbal tonics, elderberry syrup, black currant oxymel, jams and jellies, firewood, trees

AVAILABLE: Burlington Farmer's Market, Middlebury Natural Foods Co-op, Vergennes Laundry, website

SERVICES: Educational programs

154. Wild Winds Farm

Brittany Leno | 716 Hunt Road | New Haven | 802-349-8680

wildwindsfarmvt@gmail.com

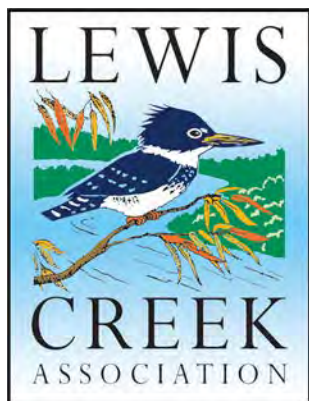
At Wild Winds Farm, we raise animals with regenerative farming practices for the most nutrient dense products and for the health and productivity of our land. We also support neighboring land through custom grazing with our goats and sheep.

PRODUCTS: Beef, pork, lamb, goat, pelts

AVAILABLE: Website, farm direct

Like Clean Water?

WE DO.



Check out our mission
and how to get involved.

lewiscreek.org



North Chittenden

155. Baird Farm Maple Syrup



Jenna Baird | 65 West Road | North Chittenden

802-558-8443 | jenna.p.baird@gmail.com | bairdfarm.com

Baird Farm is a small family farm that produces organic Vermont maple syrup and other maple products. Come visit our farmstore: open Wed - Monday from 9-5. Closed Tuesdays. Maple tours available to book through website.

PRODUCTS: Maple syrup, infused maple syrup, maple sugar, maple ketchup, beef, flowers

AVAILABLE: Farm stand, City Market, Middlebury Natural Foods Co-op, Minifactory, website

SERVICES: Community Events, farm events, educational programs

Orwell

156. Berry Meadow Farm

Kevin Schumann | 56 Mt. Independence Road | Orwell

908-507-2461 | info@berrymeadow.com | berrymeadow.com

GREENHAVEN
Gardens & Nursery
Veggies, Herbs and
Edible Landscape Plants

802-453-5382

2638 Ethan Allen Hwy. | New Haven, VT 05472
greenhavengardensandnursery.com



Tourterelle

EAT . STAY . EVENTS

JOIN US! Serving dinner Wed.-Sun. 5:30-9pm
Take-Out Menu available | **Reservations required**

3629 Ethan Allen Hwy, New Haven
www.tourterellevermont.com • 802.453.6309



In the studio on our 110 acre Orwell Vermont fiber farm, we create unique designs for our berry meadow knitting and crochet kits, all nestled in fun reusable packaging, that allow knitters and crocheters of all abilities to create beautiful garments and accessories.

PRODUCTS: Knitting and crochet kits, alpaca and rambouillet yarn

AVAILABLE: Website

157. Champlain Valley Mushrooms

Heather Ewing | 193 Young Road | Orwell

802-948-2563 | champlainvalleymushrooms@gmail.com
champlainvalleymushrooms.com

PRODUCTS: Fresh mushrooms: Oyster, Lion's Mane, Chestnut. Dried mushrooms, medicinal mushrooms, tinctures & teas

AVAILABLE: Rutland Farmers Market, Dorset Farmers Market, Rutland and Middlebury Natural Foods Co-op, website

158. Danz Ahn Dairy

Juliana Danyew | 44 Hemenway Hill Road | Orwell

802-948-2852 | danzahn.dairy@gmail.com | danzahndairy.com
Danz Ahn Dairy, licensed in 2021, is located at Danz Ahn Farm in Orwell. We make small batch, artisanal farmstead goat cheese with milk from our herd of seasonal Saanen/LaMancha-cross dairy goats, and aged cow milk cheese from milk locally sourced.

PRODUCTS: Cheese, eggs, goat milk soap

AVAILABLE: ACORN Food Hub, Middlebury Natural Foods Co-op, Vergennes Farmers Market, Shelburne Farmers Market, City Market Downtown, farm direct

SERVICES: Farm events

159. Lazy Dog Farm



Jesse Wilbur | 152 Royce Hill Road | Orwell | 802-948-2565

facebook.com/LazyDogFarm

PRODUCTS: Whole sale milk

AVAILABLE: Airbnb website

SERVICES: Farm stays/B&Bs

Langrock

SPERRY & WOOL

HERE TO HELP
YOU GROW!

The lawyers of Langrock Sperry & Wool have been supporting
Addison County Farmers for over 60 years.

Middlebury: 802.388.6356

Burlington: 802.864.0217

www.langrock.com



Stonewood Farm

FRESH VERMONT TURKEYS
Orwell, VT

Ground Turkey
Mild Sausage
Sweet Italian
Sausage

Cajun Sausage
Ground Turkey Breast
Boneless Breast
Hot Italian Sausage



Stonewoodfarm.com

Available at:

Middlebury Co-op

City Market

Healthy Living

Rutland Co-op

Hanover Co-ops



160. Ledge Haven Farm

Tom Audet | 145 Mt. Independence Road | Orwell
802-948-2545 | ledgehavenfarm@gmail.com | vtmaple.net
PRODUCTS: Maple syrup & maple products
AVAILABLE: Farm direct, website

161. Lucas Family Farms

Josh & Janelle Lucas | 37 Old Sawmill Road | Orwell
802-779-7261 | lucasfamilyfarmsllc@gmail.com
facebook.com/lucasfamilyfarms
Growing healthy soils and healthy animals, supporting clean water.
PRODUCTS: Grass-fed, grass-finished beef & lamb, freezer boxes, wholes and halves, non-GMO pastured eggs
AVAILABLE: Farm direct (call ahead), Ground Beef at Woods Market, Middlebury and Rutland Natural Foods Co-ops, Fire and Ice

162. Red Sky Farm

Ed and Paula Barnes | 613 Route 73 | Orwell | 802-948-2566
barnespj4@gmail.com | redskyfarmvt.com
A traditional farm market providing quality meats, produce and desserts year round.
PRODUCTS: Beef, poultry, turkey, pork, retail cuts, vegetables, apples, berries, bedding plants, veggie starts, hanging baskets, herb plants, perennials, cut flowers, free-range eggs, milk, cheese, honey, maple syrup, Three Bears Breads, quilts, clothing, and handmade items
AVAILABLE: Farm stand
SERVICES: Root crop box (year-round with choice of meat, vegetable,

dairy, dessert, eggs, potatoes, carrots, onions)

163. Singing Cedars Farmstead



Scott and Becky Greene and Maden | 30 Black Snake Lane
Orwell | 802-948-2062 | singingseeders@gmail.com
singing-cedars-farmstead.com

Located along the shore of Lake Champlain, Singing Cedars Farmstead strives to provide high quality diverse organic foods direct to our local community. All efforts are purposeful, ecological and humanely based; organized to make a thriving farm.

PRODUCTS: Assorted vegetables, winter greens, tomatoes, specialty vegetables, beef

AVAILABLE: ACORN Food Hub, Middlebury and Rutland Natural Foods Co-op, Buxton's Store, Three Squares Cafe, City Market, American Flatbread

SERVICES: Special orders, wholesale

164. Stonewood Farm Inc

Peter Stone | 105 Griswold Lane | Orwell | 802-948-2277
stone@stonewoodfarm.com | stonewoodfarm.com
PRODUCTS: Turkey: whole birds, ground meat and breast meat (poultry)
AVAILABLE: Middlebury Natural Foods Co-op, Healthy Living, City Market, Farm Direct

165. Sylvan Shades Farm



Missy Clifford | 133 Raymond Hill Road | Orwell
802-948-2798

AMERICAN FLATBREAD
Middlebury Hearth

marble works, middlebury
802-388-3300
americanflatbread.com

LUNCH WED-SAT 11-2PM
DINNER TUE-SAT 5-9PM

ALL NATURAL WOOD-FIRED PIZZA
FEATURING LOCAL INGREDIENTS

CLASSIC COCKTAILS
CRAFT BEERS + CIDERS
INDOOR + OUTDOOR DINING
TAKE OUT AVAILABLE

CHAMPLAIN VALLEY APIARIES
CRYSTALLIZED BEE HONEY

GUARANTEED PURE AND OF BEST QUALITY
US GRADE A

NATURALLY CRYSTALLIZED, UNHEATED & UNFILTERED.
PRODUCT OF USA AND CANADA

Established by **CHARLES MRÁZ** 1931
"The flower's fragrance is its flavor."

Champlain Valley Apiaries is a third generation Vermont family owned business. Founded in 1931 by innovative beekeeper Charles Mraz, we have been producing and packing delicious honey for over 85 years. Our honey is offered in 100% raw naturally crystallized or liquid form.

Champlain Valley Apiaries
Honey shop hours: M-F 8-4 • 504 Washington St. Ext.
P.O. Box 127 • Middlebury, VT 05753
802-388-7724 • 800-741-7334 • www.champlainvalleyhoney.com • cva@together.net



PRODUCTS: Grass-fed Highland beef (sides), broilers, organic hay
AVAILABLE: Farm direct

166. Tup's Crossing Farm LLC

Holly Menguc | 66 Young Road | Orwell | 802-948-9827
 tupscrossing@gmail.com | facebook.com/tupscrossingfarm
 Family owned and operated goat's milk dairy. We produce pasture raised goat's milk for Vermont Creamery. We do NOT sell raw milk on the farm. Seasonally offering Alpine, Saanen and LaMancha dairy goat bucklings and doelings.

PRODUCTS: Dairy goat bucklings and doelings

SERVICES: Breeding stock, farm tours

167. Yankee Rock Farm

Siri Swanson | 1450 Middle Road | Orwell | 781-264-0430
 yankeerockfarm@gmail.com | yankeerockfarm.com
 Yankee Rock Farm is a pasture-based livestock operation home to around 200 sheep producing feeder lambs, breeding stock, and wool products. Shepherds Siri and Colin also serve the community as professional sheep shearers, wool buyers, and educators.

PRODUCTS: Lamb, fiber, wool, pelts, fleece, roving, yarn, knit apparel

AVAILABLE: Website

SERVICES: Sheep shearing

Panton

168. Agricola Farm

Ale/Steo Rellini/Pinna | 2674 Jersey Street | Panton
 802-475-3409 | alerellini@gmail.com | agricolavermont.net
PRODUCTS: Salami & charcuteries, pastured meats, seasonal duck and chicken eggs, italian products at the farmstand
AVAILABLE: ACORN Food Hub, farm stand, website
SERVICES: Monthly farm dinners

169. Farmhouse Table

Teresa / Adam Boucher / Neff | 21 Fisher Lane | Panton
 802-345-5360 | madhunter@gmavt.net
 facebook.com/farmhouse.table.75
 Small subsistence farm with products to share located under 2 miles outside of Vergennes.

PRODUCTS: Poultry, pork, vegetables, baked goods and different types

of pickles

AVAILABLE: Farm Direct

170. Jackson Hill Gardens

Joy Jackson | 409 East Road | Panton | 802-324-3653

PRODUCTS: Free-range eggs, veggies and baked goods

AVAILABLE: Farm stand, pickup and delivery in Vergennes area

171. Wiggly Goat Farm

Krista Diego | 1650 Lake Road | Panton | 603-991-9818

farmer@wigglygoatfarm.com | wigglygoatfarm.com

Wiggly Goat Farm is where our happy herd of goats, sheep, llamas, alpacas, rabbits, and chickens call home. We take pride in crafting goat milk lotions, soaps, yarn and felted items. Visit our Farm Shop, or schedule your private Barn Visit today!

PRODUCTS: Fiber, wool, goat milk lotions, yarn, felted items, fleece

AVAILABLE: Farm stand, private farm visit, website

Pawlet



172. Laughing Child Farm

Brooke & Timothy Hughes-Muse | 3209 VT Route 30 | Pawlet
 802-884-5893 | farmer@laughingchildfarm.com
 laughingchildfarm.com

Vermont's organic sweet potato farm is located in Pawlet VT, in the scenic Mettawee Valley. We've been organically farming sweets for over 14 years. Life is sweeter here.

PRODUCTS: Sweet potatoes, sweet potato pie

AVAILABLE: ACORN Food Hub, Middlebury Natural Foods Co-op, City Market, Healthy Living, farm stand, Shelburne Market, Head Over Fields, Lantman's Market

Pittsford

173. Gagnon Lumber

Ken Gagnon | 89 Stevens Road | Pittsford | 802-483-6550

gagnonlumber@aol.com | gagnonlumber.com

Small family owned sawmill and lumber yard producing local lumber, bark mulch, wood chips and sawdust.

PRODUCTS: Lumber, bark mulch, sawdust, wood chips



JUICES, SMOOTHIES, BOWLS
 SALADS, BAKED GOODS,
 SNACKS, AND SO MUCH MORE!

FEATURING GLOBALLY INSPIRED /
 LOCALLY SOURCED FOOD
 MADE FRESH IN HOUSE

GRAB AND GO, OR SIT AND ENJOY
 LOVELY VIEWS OF TRIANGLE PARK

16 Merchants Row
 Middlebury, VT 05753
 802-458-8243





IPJ
Real Estate

*Plant, tend, keep,
reap, raise, nurture
and grow,
in Addison County.*

*Whether you're looking for a backyard or a
barnyard, we'll help you find it!*

IPJREALESTATE.COM

34 MAIN STREET, MIDDLEBURY
802-388-4242 | INFO@IPJREALESTATE.COM

SHIRE TOWN
MARKETPLACE

54 COLLEGE STREET MIDDLEBURY, VT

WOOD FIRED COOKING & SMOKED MEATS
BREAKFAST • LUNCH • BAR-B-QUE
LOCAL MEATS & CHEESE
CRAFT BEER, WINE & CIDER
CREEMEE STAND
SHIRETOWNMARKETPLACE.COM

Hope

Helping Overcome Poverty's Effects

**Thanks to our
farmers for
helping us
provide food
to those who
need it most.**

Would YOU like to help?

Contact us at HOPE-VT.ORG

LEMON FAIR HONEYWORKS

RAW HONEY FROM UNTREATED BEES

Cornwall, Vermont
lemonfairhoneyworks.com



174. VT Terps Cannabis



Susan Markowski | 4270 Route 7 | Pittsford | 802-483-6503
mail@vtterps.com | vtterps.com

Seed to package organic CBD Products.

PRODUCTS: CBD oil, CBD lotions, gummies and teas

AVAILABLE: Retail Store in Pittsford, Website, THC Dispensary

Richmond

175. Farr Farm

Erin Farr | 400 Huntington Road | Richmond | 802-233-7925
farr.farm@gmail.com | farrfarm.com

We are a family farm in Richmond, after being a dairy since the 40's we have transitioned to crops, beef, pork, eggs and agrotourism! We have a farm stand where folks can buy our products and other local items. In the fall, we have a Sunflower Walk.

PRODUCTS: Beef, pork, flowers, eggs, pickles and ferments, soap and body products, wreaths and baskets, maple syrup

AVAILABLE: Farm stand

SERVICES: CSA, community events, educational programs, farm events, floral services, pick your own

176. Maple Wind Farm

Beth Whiting | 1149 E Main Street | Richmond
802-322-3739 | hello@maplewindfarm.com
maplewindfarm.com

In our 27th season of producing the highest quality pasture raised products while regenerating soil and water resources

PRODUCTS: 100% grass fed and finished beef, pasture raised non GMO chicken, pork, eggs and turkeys

AVAILABLE: Website, Burlington Farmers Market, home delivery, shipping through New England, farm market (open daily 8am-8pm)

SERVICES: USDA Poultry processing

Ripton

177. High Rows Vineyards

William Ford | 388 Lincoln Road | Ripton
highrowsvineyards@gmail.com | highrowsvineyards.com
Bill and Brian Ford have been producing wine from cold-hardy grapes grown in our Goshen, Middlebury, and Ripton vineyards since 2018. Our Ripton winery is open by appointment or during scheduled tasting hours.

PRODUCTS: Wine from grapes grown in vineyard

AVAILABLE: Middlebury Natural Foods Co-op, farm direct, Middlebury Discount Beverage, ShireTown Marketplace, Hare and the Dog, website

178. Mountainyard Farm



Mia and Freeman Allen | 1676 Natural Turnpike Road | Ripton
802-388-7394 | mtydfm@gmail.com

V.O.F certified - 1991 and R.O.P. certified - 2020

PRODUCTS: Cucumbers, flowers, garlic, onions, tomatoes

AVAILABLE: Ripton Country Store, farm stand



Located in the heart of Hinesburg,
Lantman's Market has provided local
grocery products and friendly service for
over 90 years.



10681 Rt. 116 Hinesburg, VT 05461
info@lantmansmarket.com
(802) 482-2361

Little Pressroom

You grow it and make it.

We help label it.

Together, let's make your products look great.



Peterson Leadership
Personal Growth
Career Success

Our Story...
In 2016, students from the Natural Resource Management class built a state of the art maple production facility on the James Family Farm in Weybridge, VT.
Designed, built, and operated with pride by agriculture students in Vermont.



Little Pressroom is happy to help ACORN with their printing of **flyers, posters, and brochures.**
We would love to print for you too!

littlepressroom.com

(802) 388.2337

**179. Nola's Secret Garden**

Nola Kevra | 2936 Natural Turnpike Road | Ripton
802-388-6107 | markrusciolelli@gmail.com

PRODUCTS: Organic greens, herbs, mixed vegetables, vegetable plants, cut flowers, Middle Eastern summer squash (Koosa)

AVAILABLE: Farm direct, Middlebury Natural Foods Co-op

Rochester

180. Kismet Farm

Megan Payne | 405 Sawmill Hill Road | Rochester
802-767-3282 | kismetfarmvermont.com

PRODUCTS: Seed to vase flowers, cut flowers, craft CBD flowers and tincture

AVAILABLE: Local florists, farmers markets, restaurants, website

181. North Hollow Farm

Mike Bowen | 2124 N. Hollow Road | Rochester
802-767-4255 | orders@vermontgrassfedbeef.com
vermontgrassfedbeef.com

PRODUCTS: Grass-fed beef, pork (retail cuts), chickens, maple syrup

AVAILABLE: Farm direct, North Hollow Farm Store, Middlebury Natural Foods Co-op, website

182. Sunshine Valley Berry Farm

Rob Meadows | 129 Ranger Road | Rochester | 802-767-3989
rob@vermontberries.com | vermontberries.com

PRODUCTS: Blueberries, raspberries, jam, raw honey, maple syrup

AVAILABLE: Farm direct

SERVICES: Pick your own, barter help for farm credit

183. Uphill Farm

Paula and Kevin Dougherty | Bethel Mt Rd. | Rochester
farmers@uphillfarmvt.com | uphillfarmvt.com

At Uphill Farm we emphasize quality over quantity. As a small scale grower we can make sure only the best produce finds its way to your table. We love what we do and take great pride in being affordable and of top quality with all of our offerings!

PRODUCTS: Herbs, flowers, assorted vegetables, blueberries, raspberries, currants, eggs, various pestos, jams and jellies

AVAILABLE: Rochester Farmers Market, Waitsfield Farmer's Market, website

SERVICES: CSA

Salisbury

184. Maple Meadow Farm

George & Jackie Devoid | 518 Maple Street | Salisbury
802-352-4241 | maplemeadowfarmvt@gmail.com
maplemeadowfarmeggs.com

Providing fresh local eggs and Vermont Maple Syrup for three generations. Maple Meadow Farm is owned and operated by the Devoid Family.

PRODUCTS: Eggs (conventional and cage-free) and maple syrup

AVAILABLE: Middlebury Natural Foods Co-op, City Market, Healthy Living, Greg's Meat Market, farm store, website

SERVICES: Wholesale egg delivery

Shelburne

185. Bread & Butter Farm

Corie Pierce | 200 Leduc Farm Road | Shelburne
802-985-9200 | breadandbutterfarm@gmail.com
breadandbutterfarm.com

PRODUCTS: Beef and pork, retail cuts, mixed vegetables, as well as various products from neighboring farms Blank Page Cafe: gluten-free bakery, coffee drinks, breakfast taco Fridays!

AVAILABLE: Farm store, website

SERVICES: Educational programs, summer camp, farmer training, live music, CSA

186. Farm Craft VT

Rebecca Lindenmeyr | 6608 Route 116 | Shelburne
802-363-3044 | team@farmcraftvt.com | farmcraftvt.com

A Seed to Soap Herb Farm in Vermont - growing herbs and sunflowers, pressing and distilling plant oils, raising bees, and making botanical products. Stop by the self-serve farm shop to buy natural soaps, lotions, herb teas, honey and more!

PRODUCTS: Herbs, soap and body products, honey

AVAILABLE: Farm stand, website

SERVICES: Educational programs, farm events, farm stays/B&Bs

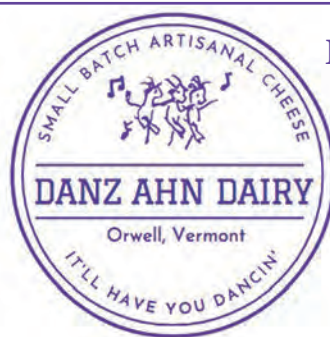
★ DEPOT FARM SUPPLY ★



A LOCALLY OWNED COMPANY

Check with us for all of your
bag or bulk feed needs.

Leicester Junction • 802-247-6700



DANZ AHN DAIRY
ORWELL, VT

Small batch artisanal
Goat and Cow Cheese

danzahndairy@gmail.com

802-989-5624

www.danzahndairy.com



187. Killeen Crossroads Farm

Kieran Killeen | 1283 Cheeseactory Road | Shelburne
802-233-5131 | hello@killeencrossroadsfarm.com
killeencrossroadsfarm.com

A diversified farm that produces eggs, poultry, beef, specialty vegetables, herbs, and flowers. Expanding farm dinners paired with local and out of state chefs.

PRODUCTS: Beef, poultry, herbs, flowers, assorted vegetables, pickles and ferments, jams and jellies

AVAILABLE: Farm stand, Farm Direct, website

SERVICES: CSA, community events, educational programs

188. New Village Farm

Michaela Ryan | 700 Harbor Road | Shelburne
802-265-0555 | newvillagefarmprograms@gmail.com
newvillagefarm.com

New Village Farm is a diversified educational farm located in Shelburne, Vermont. The small raw milk cow and goat dairies, poultry operation, gardens, and wilderness areas form an extensive outdoor learning space where people of all ages are invited to actively participate.

PRODUCTS: Raw cow & goat's milk, chicken, eggs, beef, lamb & goats, seasonal vegetables, herbs and flowers

AVAILABLE: Farm stand, from 8 am - dusk, daily

SERVICES: Year-round educational programs including: Summer Camps, Farm School, After School, Family Farming Time, Goat Snuggles, volunteer days, and community garden plots

189. O Bread Bakery



Chuck/Carla Conway/Kevorkian | 352 Farm Barn Lane
Shelburne | 802-985-8771 | info@obread.com | obread.com

A family owned business located in the Farm Barn at Shelburne Farms since 1977. Handmade breads, pastries and cookies available at the bakery when walking at Shelburne Farms, at local stores, Shelburne Farmers Market and website.

PRODUCTS: Bread, pastries, cookies

AVAILABLE: Middlebury Natural Foods Co-op, City Market, Shelburne Farmers Market

190. Shelburne Farms

1611 Harbor Road | Shelburne | 802-985-8686
info@shelburnefarms.org | shelburnefarms.org

PRODUCTS: Cheese, eggs, vegetables, beef, lamb (retail cuts), maple syrup


AVAILABLE: Farm stand, website, cheese sold through catalog and at local grocery stores

SERVICES: Farm-based education programs for all ages; Institute for Sustainable Schools, walking trails, inn & dining

191. Shelburne Sugarworks

Steve Palmer | 746 Shelburne-Hinesburg Road | Shelburne
802-233-7531 | shelburnesugarworks@gmail.com
shelburnesugarworks.com

PRODUCTS: Maple products: syrup, cream, sugar, candy. Line of maple



HEALTHY & AFFORDABLE MEATS FOR YOUR FAMILY

Antibiotic & Artificial Hormone Free

- Grass-Fed Beef
- Pork, Bacon, Ham
- Meat Birds in Season

USDA-inspected frozen meats by the cut or bulk packages

Farm Store
Open Mon-Sat, 9-5

Harvey, Donna & AnnaJo Smith
2516 Lime Kiln Rd., New Haven, VT
802-349-0284
SmithFamilyMeats.com








Farm Shop | wigglygoatfarm.com | **Barn Visit**

Panton, Vermont



*We grow crops...
That feed the cows...
That make the milk...
That we bottle fresh for
you everyday!*

**Local Milk at
its very Best!**

Monument Farms Dairy • 2107 James Road
Weybridge, VT • 545-2119





PICK YOUR OWN. LOCAL GOODS. ORGANIC VEGGIES & BERRIES

SWEET ROOTS FARM & MARKET

4702 ETHAN ALLEN HWY,
CHARLOTTE, VT

@SWEETROOTSVT
@SWEETROOTSVT

SWEETROOTSVT.COM
802.425.3652

O Bread

Find us in local stores or stop at the bakery
to pick up fresh baked goods
when you walk at Shelburne Farms.

Family owned since 1977. | www.obread.com

Native Vermont Lumber

Hemlock Framing Stock
Custom Cut Timbers
White Pine Flooring and Siding
Shiplap, V-Groove, Tongue & Groove
Bark Mulch, Wood Chips, Sawdust

Gagnon Lumber

Ken and Joe Gagnon
89 Stevens Road, Pittsford, VT 05763
(802) 483-6550
gagnonlumber.com



**Planning a building project or
timber harvest? CONTACT US!**

ice creams. March - Sugar on Snow

AVAILABLE: Sugarhouse, website, Healthy Living, farm stand

SERVICES: Tours, tastings

192. Shelburne Vineyard

Ken Albert, Sam Coppola & Ethan Joseph | 6803 Shelburne Rd
Shelburne | 802-985-8222 | info@shelburnevineyard.com
shelburnevineyard.com

It takes determination and dedication to be a winegrower in Vermont. This land is not for the faint of heart. At Shelburne Vineyard, we have been pioneers and champions of the Vermont wine region for over two decades.

PRODUCTS: Red, white, rose and sparkling wines made from our cold-hardy Vermont-grown grapes, cider, ice cider

AVAILABLE: Tasting room, retail store, website, as well as stores, specialty shops and restaurants throughout VT and NH

SERVICES: Tastings, tours, musical events, event facilities

193. Sisters of Anarchy Ice Cream

Becky Castle | 4947 Spear Street | Shelburne
802-495-5165 | info@sistersofanarchyicecream.com
sistersofanarchyicecream.com

Unlike most ice cream companies, we don't throw around 'farm-to-cone' just because it's a catchy phrase. Our ice cream is, truly, farm-to-cone, made on-site at our farm, almost entirely with flavor elements grown by the ice cream makers. We pride ourselves on sustainable practices.

PRODUCTS: Blackberries, blueberries, grapes, raspberries, farm-to-cone ice cream, wellness syrups

AVAILABLE: ACORN Food Hub, website, Middlebury Natural Foods Co-op, City Market, Healthy Living, farm stand

SERVICES: Community events. At the farm we have a great playground, tetherball, yard games, and frisbee golf.

194. Vermont Tortilla Company



April Moulart | 22 Sage Court, Suite 1 | Shelburne
802-999-4823 | april@vtortillaco.com | vtortillaco.com

Our certified organic tortillas are made with 100% freshly stone ground corn grown 8 miles from our factory. They are gluten, allergen, and additive free.

PRODUCTS: Tortillas

AVAILABLE: ACORN Food Hub, Middlebury Natural Foods Co-op, City Market, Healthy Living, wholesale, factory store, website

SERVICES: Factory tours, educational programs

Shoreham

195. Champlain Orchards

Bill Suhr | 3597 VT Route 74W | Shoreham | 802-897-2777
office@champlainorchards.com | champlainorchards.com

As one of the oldest continually operating orchards in Vermont, we take pride in growing over 175 varieties of Eco-Certified apples, peaches, pears, plums, cherries, nectarines, and berries while carefully stewarding the land.

PRODUCTS: Ecologically-grown apples, cherries, peaches, nectarines,



plums, pears, raspberries, blackberries, elderberries and currants; baked goods including apple pies, turnovers, and cider donuts; provisions including apple butter, cider syrup, maple cider syrup and VOF certified organic maple syrup; sweet cider and specialty hard ciders

AVAILABLE: Coops, grocery stores and farmstands throughout Vermont, restaurants, wholesale, website

SERVICES: Pick your own

196. Cousineau Cattle Co.

Glen Cousineau | 114 Hemenway Hill Road | Shoreham
802-349-4222

PRODUCTS: USDA inspected beef, sides, quarters, retail cuts

AVAILABLE: Farm direct

197. Daona Farm American Wagyu Beef

Elaine Brisson | 1079 School Street | Shoreham
802-771-7391 | daona@shoreham.net | daonawagyu.com

We sell farm raised American Wagyu Beef (50% Wagyu genetics) as well as DNA verified Fullblood Wagyu Beef (100% Wagyu Genetics) from our farm store. Frozen individual cuts and larger amounts available.

PRODUCTS: Please call ahead to check availability or pre-order.

AVAILABLE: Beef Retail cuts at our farm store

198. Elysian Fields



Kathleen Hescock | 3658 VT Route 74W | Shoreham
802 989 3849 | kathleenhescock@hotmail.com

PRODUCTS: Beef, fed on homegrown feed, by the half or whole, wheat berries

AVAILABLE: Farm direct

199. Golden Russet Farm



Pauline Stevens | 1329 Lapham Bay Road | Shoreham
802-897-7031 | orders@goldenrussetfarm.com
goldenrussetfarm.com

Golden Russet Farm is a certified organic wholesale vegetable, herb and cut flower farm. Our greenhouses are open in the Spring for retail plant sales. We've been certified organic by VOF since 1987 and are focused on selling most of our high quality produce, flowers and plants within Addison County.

PRODUCTS: Assorted vegetables, herbs and cut flowers, vegetable and herb starts, flowering annuals, perennials, hanging baskets, organic fertilizer, compost and potting soil, seeds, onion sets, seed potatoes, decorative pottery and supplies

AVAILABLE: Middlebury Natural Foods Co-op, American Flatbread Middlebury, Haymaker Bun Company, The Tillerman, Vergennes Laundry, Jessica's at Swift House Inn, City Market, Healthy Living

200. Lakeview Leicesters

Glen Cousineau | 144 Hemenway Hill Road | Shoreham
802-948-2779 | gcct@shoreham.net

PRODUCTS: USDA inspected lamb, whole or retail cuts, sheepskins, breeding stock, raw fleeces

AVAILABLE: Farm direct

Addison County Solid Waste Management District

The District provides innovative solutions for waste reduction and diversion. Get help with:

- Solid waste planning and management
- Public outreach
- Hazardous waste, recycling, composting
- Educational programs and technical support
- Advocacy on waste-related issues
- Enforcement against illegal burning and dumping

Purchase containers for recycling and organics management.

District Transfer Station Hours:
M-F: 7 AM to 3 PM
SAT: 8 AM to 1 PM

HazWaste Center Hours:
M-F: 8 AM to 2 PM
SAT: 8 AM to 1 PM

New Haven Residential Drop-Off Hours:
FRI: 7 AM to 2 PM
SAT: 7 AM to NOON

(802) 388-2333 · AddisonCountyRecycles.org · acswmd@acswmd.org
1223 Rte 7 South Middlebury, VT | Residential Drop-Off: 100 Kings Way (off Campground Rd.), New Haven

JOIN THE MOVEMENT

Soil grown. Pasture raised. Farmer led.

REAL ORGANIC PROJECT
certified farms guarantee the highest level of integrity and transparency, and adherence to the original spirit of organic farming.

ELMER FARM
Middlebury

LARSON FARM & CREAMERY
Wells

OLD ROAD FARM
Granville

FOOTPRINT FARM
Starksboro

LOOK FOR THE LABEL



201. Rolling Bale Farm and Animal Farm Creamery



Ben and Hilary Haigh | 1695 Shacksboro Road | Shoreham
802-897-5630 | rollingbalefarm@gmail.com
rollingbalefarm.com

Founded in 2014, Hilary and Ben Haigh raise beef, certified organic lamb, blueberries, and make farmstead cultured butter and buttermilk.

PRODUCTS: Beef, lamb, blueberries, butter, buttermilk, pelts

AVAILABLE: Farm direct, Trillium Hill Farm Stand. Buttermilk: most VT co-ops and health food stores, contact the farm for more info

SERVICES: Bulk discounts, custom cut, shipping of frozen meat

202. Vermont Trade Winds Farm

Tim & Loraine Hescocock | 884 Route 74E | Shoreham
802-897-2448 | info@vermonttradewinds.com
vermonttradewinds.com

Trade Winds Farm has been a family-owned maple syrup farm since 2003. Tim & Loraine Hescocock run the farm and maple store year-round. The farm produces different grades of maple syrup, as well as barrel aged & infused. Containers can be filled with syrup-on-tap. Seasonal produce: peaches, Christmas trees, wreaths & garlands.

PRODUCTS: Maple syrup, maple rub, Frog Run Granola, maple candies, maple cream, maple walnuts, maple popcorn, maple cotton candy, sweet corn, pumpkins, peaches, apples, strawberries, ciders, Christmas trees, wreaths, garlands

AVAILABLE: Middlebury Natural Foods Co-op, farm stand, website

SERVICES: Full tasting bar, over 6 varieties of maple syrup on tap

203. WhistlePig Farm

2139 Quiet Valley Road | Shoreham | 802-897-7700
info@whistlepigrye.com | whistlepigwhiskey.com
PRODUCTS: Rye whiskey

AVAILABLE: See Vermont DLC for local liquor store listings; Waitsfield, Burlington, and Rutland Farmers Markets; local restaurants; website

204. Work and Days Farm

Caroline Usher | 619 Tottingham Road | Shoreham
802-897-2822 | sheep@shoreham.net
PRODUCTS: Lamb, seasonal and dried flowers

AVAILABLE: Farm direct

Shrewsbury

205. Stone's Throw Farmstead



Jessica/Connor Purks/Self | 120 Wilmouth Hill Road
Shrewsbury | 240-818-4521 | stonesthrowfarmstead@gmail.com
stonesthrowfarmstead.com

We are young farmers growing certified organic flowers and veggies on a half-acre low-till market garden. We also raise pasture-raised sheep and alpacas for meat, fiber, and fertility. We believe farming can be one of the best ways to care for our planet and mitigate climate disruption.

PRODUCTS: Cut flowers, assorted vegetables, lamb, mutton

AVAILABLE: ACORN Food Hub, Rutland Farmers Market, VFFC Online

Market, farm stand

SERVICES: Flower arrangements

South Burlington

206. The Simmering Bone

Rachel Collier | 57 Commerce Ave., Unit 3 | South Burlington
802-578-7579 | simmervt@gmail.com | thesimmeringbone.com

Mission-drive crafters of small-batch bone broths carefully designed to help you sip your way to better health. We support sustainable agriculture, regenerative farming practices, humane animal husbandry, and environmentally friendly packaging.

PRODUCTS: Beef, poultry, lamb, bone broth

AVAILABLE: ACORN Food Hub, Healthy Living, website

207. FUNJ Shrooming Company



Kevin Melman | 1580 Dorset St | South Burlington
848-219-2401 | kevin@funjshrooming.com
funjshrooming.com

FUNJ Shrooming Company is an organic certified mushroom farm with the goal of cultivating with earth-friendly practices, providing superior quality at the best price, and working closely with our customers to share our love of mushrooms!

PRODUCTS: Mushrooms

AVAILABLE: ACORN Food Hub, Always Full Asian Market

Starksboro

208. Bee Happy Vermont

Pedro Salas | 258 Big Hollow Road | Starksboro
802-453-7996 | beehappybeekeeper@gmail.com
beehappyvermont.com

Our land where we have our hives is all natural. Our Honey, from Starksboro and St. Albans, is a mix of clover and wildflowers.

PRODUCTS: Honey, creamy honey, honey mead, honey lemonade, honey baklava, lip balm, beeswax candles

AVAILABLE: Burlington Farmers Market, Richmond Farmers Market, Winooski Farmers Market, website, farm stand

SERVICES: Picking up wayward swarms

209. Bending Birch Homestead

Dwyer Haney | 685 Dan Sargent Road | Starksboro
801-550-5874 | dwyer.haney@gmail.com
[instagram.com/bendingbirchhomestead](https://www.instagram.com/bendingbirchhomestead)

Bending Birch Homestead is a young, incredibly diverse food forest seeking to change people's perceptions of what agriculture can look like. We focus on chestnuts, hickories, mulberries, and silvopastured meat.

PRODUCTS: Nuts, fruits, silvopastured meat, tree seedlings

SERVICES: Permaculture / agroforestry design and consulting

210. Champlain Valley Hops

Max Licker | 5459 Route 116 | Starksboro | 802-448-0525
max@champlainvalleyhops.com | champlainvalleyhops.com
Champlain Valley Hops is the largest hop farm in New England. 30



minutes south of Burlington, we grow and process premium hops for the region's craft breweries and home brewers. CVH is passionate about local agriculture and enjoy providing regional brewers access to local ingredients with unique flavors that represent Vermont.

PRODUCTS: Hop pellets and wet hops during harvest (varieties: Cascade, Centennial, Chinook, Comet, Crystal, Magnum, Triumph, Nugget, and Willamette)

AVAILABLE: Website

SERVICES: Spot hops, hop contracts, public and private farm tours

211. Dunham Family Maple



Jeff Dunham | 3702 Ireland Road | Starksboro
802-453-4219 | dfmaple@gmavt.net

PRODUCTS: Maple syrup

AVAILABLE: Farm direct

212. Flatlander Farm

Keith and Lisa Drinkwine | 2148 VT Route 17 | Starksboro
802-453-4631 | info@flatlanderfarm.com | flatlanderfarm.com
Founded in 2013 by Keith Drinkwine and Lisa Burritt Drinkwine, Flatlander Farm is known for quality pasture-raised chicken, duck and goose. Our grazing practices are rooted in our commitment to healthy animals, diverse pasture systems and clean watersheds. Our chicken and duck, and other local products, are available at our farm stand.

PRODUCTS: Pasture raised chicken, duck, goose, goat, flowers, duck eggs, chicken eggs, baked goods, jams, herbal products

AVAILABLE: Farm stand

SERVICES: Chicken CSA and goose pre-order. Sign-up begins in January

213. Footprint Farm



Taylor Mendell | 760 Tatso Road | Starksboro | 802-318-2090
csa@footprintfarmvt.com | footprintfarmvt.com

We grow organic vegetables for a CSA program and local restaurants, caterers, and retail establishments. We specialize in year-round greens, and partner with over a dozen local producers to bring a wide range of products to our CSA members.

PRODUCTS: Assorted vegetables

AVAILABLE: Middlebury Natural Foods Co-op, Minifactory, Old Brick Store, Tillerman, Bobcat Cafe, Hogback Brewery, Haymaker Buns, Tourterelle, Starry Night Cafe, Cucina Antica, Honey Road, Grey Jay, Beaudry's, Pizzeria Ida

SERVICES: Year round CSA

214. Hillsboro Sugarworks



Julie and Bill Heffernan | 409 Gore Road | Starksboro
802-453-4699 | info@hillsborosugarworks.com
hillsborosugarworks.com

We are a family owned and operated certified organic maple sugaring operation located on Hillsboro Mountain in Starksboro Vt. Visit our website to learn more.

PRODUCTS: Maple

AVAILABLE: ACORN Food Hub, Healthy Living, City Market, Middlebury



**We have everything
you need for your yard,
gardens and farm!
Oh and we sell
hardware, too 😊**



- Live Plants
- Soils & Mulch
- Moo Doo
- FoxFarm
- Coast of Maine
- Scotts
- Miracle Gro
- Poultry Care & Supplies
- Horse Care & Supplies
- Livestock Care & Supplies
- And much more!

AUBUCHON 859 Route 7 S
ACE HARDWARE Middlebury

Discover the legacy of Layn Farms — Five Generations Strong

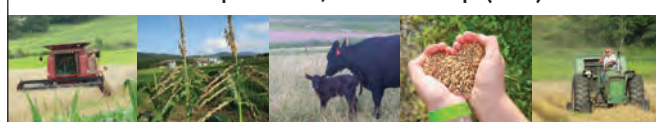


Nestled in the countryside, Layn Farms is more than a farm — it's a legacy of family, tradition, and excellence.

As a fifth-generation farm, we cultivate top-quality grains like oats, wheat, rye, corn, and soybeans. We treat our livestock with care and commitment, offering fresh, responsibly-raised beef, pork, lamb, chicken, turkey, and eggs. For natural fibers, our farm produces premium wool, ideal for crafting and sustainable living.

Experience the heart of farming at Layn Farms, where we bring wholesome, farm-fresh goodness from our fields to your table.

3984 Bristol Rd. | Bristol, VT 05443 | (802) 355-3570





Natural Foods Co-op, farm stand, website

215. Lewis Creek Farm

Hank Bissell | 3071 VT Route 116 | Starksboro
802-453-4591 | lewiscreekfarm@gmavt.net
lewiscreekfarm.com

Lewis Creek Farm has been growing vegetables on the rich bottom lands of Lewis Creek since 1981. We have a reputation for top quality, competitive pricing and environmental responsibility. All winter we offer potatoes and root vegetables, dry beans, eggs and pickles. Summer begins with strawberries...and ends with watermelon.

PRODUCTS: Assorted vegetables, herbs, strawberries, melons, eggs, pickles and ferments, plants and starts, flowers, hanging baskets

AVAILABLE: City Market, Healthy Living, wholesale, farm stand, website

SERVICES: Year round CSA, pick your own

216. Maggie Brook Sugarworks

Matthew Elder | 500 Ruby Brace Road | Starksboro
melder@gmavt.net

PRODUCTS: Maple syrup and sap

217. Norris Sugarworks

Kelly Norris | 2951 Vermont Route 17 | Starksboro
802-453-4753 | norrissw@gmavt.net | norrissugarworks.com

PRODUCTS: Maple syrup, maple candy, maple cream

AVAILABLE: Farm direct, mail order

218. Red Rock Valley Maple Farm

Henry & Linda Emmons | 160 Sugarhouse Lane | Starksboro
802-434-2858

PRODUCTS: Maple syrup

AVAILABLE: Sugar house

219. Russell Farm

David Russell | 1248 VT Route 116 | Starksboro
802-453-2208 | amymansfield@gmavt.net

PRODUCTS: Sweet corn, summer & winter squash, maple syrup, maple products

AVAILABLE: Farm direct

SERVICES: Christmas Trees with horse drawn rides

220. Sentinel Farms

Kerry Harris | Starksboro | 802-377-1066
unboundgrace.org

Beef raised with love, harvested without stress or fear, leaving no harmful fight or flight toxins behind.

PRODUCTS: Grass-fed, grass-finished beef

AVAILABLE: Farm direct

SERVICES: Sentinel Saturdays: Noon-3pm. Enjoy family activities with horses and healthy food. Horse and farm educational health experiences, riding lessons, individual and group equine programs

221. Shaker Maple Farm

Leah and Steve Willsey | 2047 Shaker Hill Road | Starksboro
802-434-5353 | shakermplefarm@gmavt.net

We make maple syrup.

PRODUCTS: Maple syrup

AVAILABLE: Farm direct, Middlebury Natural Foods Co-op, Shelburne Supermarket, Walmart

222. Shaker Mountain Farm



Ann Bove | 1400 Shaker Hill Road | Starksboro
802-324-3861 | shakermt@gmavt.net
shakermountainfarmvt.com

Certified organic and bird friendly local maple syrup

PRODUCTS: Maple syrup

AVAILABLE: Farm direct, website

223. Shangrila Farm

Kit & Karen | 35567 Route 17 | Starksboro
kitharris72@gmail.com | shangrilafarmvermont.com

PRODUCTS: Eggs, garlic

AVAILABLE: Farm direct, Middlebury Natural Foods Co-op, Jerusalem Store

224. Upstream Sugarworks

Michael Shepard | Starksboro | 802-349-5785
upstreamsugarworks@gmail.com

7th generation family farm producing wood fired pure maple syrup.

PRODUCTS: Sweet cider, maple syrup, maple cream, maple sugar

AVAILABLE: Island Girl Jewelry, Flatlander Farm Farmstand, farm direct





225. vTerra Farms



Kevin Kennedy | 205 Cemetery Road | Starksboro
802-434-7484 | kevin@vterrafarms.com | vterrafarms.com

vTerra is a diversified hemp farm specializing in fast-acting CBD products formulated with premium, vitamin-rich, low glycemic whole foods. We are vertically integrated, managing every step of the process ourselves, and use regenerative growing techniques that ensure crop health and potency. Full spectrum CBD is nano-encapsulated using 100% natural, plant-based emulsifiers.

PRODUCTS: Pasture-raised chicken and duck eggs, garlic, peppers, ginger, tomatoes, cucumbers, corn, sunflowers, squashes, pumpkins, CBD hemp, berries, apples, melons, eggs, CBD products

AVAILABLE: Shelburne Farmers Market, Hudak Farm Store, Champlain Valley Community Fitness, Hatchet Restaurant, Spruce Restaurant, website

SERVICES: Event hosting

Sudbury

226. Green & Gold CSA



Paige Wener | Sudbury | greenandgoldcsa@gmail.com
greenandgoldcsa.com

Green & Gold is a no-till, woman-run farm that began in New Haven, VT in 2019. We now cultivate one acre in Sudbury within sight of Lake Horton. We market our high-quality produce through our beloved CSA and the Middlebury Farmers Market.

PRODUCTS: Assorted vegetables, heirloom and cherry tomatoes, watermelon and cantaloupe, herbs

AVAILABLE: Middlebury Farmers Market

SERVICES: Summer and fall CSA

227. Miller Hill Farm Nursery and Gardens

Carl Phelps | 2127 Route 73 E. | Sudbury | 802-623-7373
mhfarm@shoreham.net | millerhillfarmvt.com

We are a family owned farm & nursery supplying select trees, shrubs, and related items. At times we also have some fiber available.

PRODUCTS: Herbs, wool, tree, plants and starts

AVAILABLE: Farm stand

SERVICES: Farm events, educational programs

228. Rup's Custom Cutting and Smoking

Rupert Larock | 2015 Willowbrook Road | Sudbury
802-247-4570

Retail Sales on Friday. Call ahead to order.

PRODUCTS: Meat processing & smoking

SERVICES: On sight slaughtering of farm raised animals

229. The Stevens Farmstead

Jane Costello | 5 Williams Lane | Sudbury | 802-349-6854
thestevensfarmstead@gmail.com | thestevensfarmstead.com

Founded in 2014, The Steven's Farmstead is owned by a 9th generation Vermont. We offer produce, bakery, prepared meals, soups, salad and quiche as well as catering and holiday wreaths

PRODUCTS: Assorted vegetables, meals, soup, salad, wreaths and

baskets, baked goods

AVAILABLE: ACORN Food Hub, Brandon Farmers Market, farm stand, Farm Direct, website

SERVICES: CSA, catering

Vergennes

230. Boundbrook Farm

Erik Andrus | 276 Burroughs Farm Road | Vergennes
802-877-1396 | erik@vermontrice.net | vermontrice.net

PRODUCTS: Ducks, white rice, brown rice

AVAILABLE: Farm direct, website

231. Diddle & Zen

Abby Matson | 221 Main Street | Vergennes | 802-877-6663
hello@diddleandzen.com | diddleandzen.com

Founded in 2019, Diddle & Zen is a cut flower farm located 8 miles outside of Vergennes. Our seasonal farm stand features ready made bouquets, flower bar and gifts. We are also a full service flower and gift shop in Vergennes, VT.

PRODUCTS: Flowers, wreaths and baskets

AVAILABLE: Farm stand, Diddle & Zen shop

SERVICES: CSA, farm events

232. Lost Lantern Whiskey

Nora Ganley-Roper | 11 Main Street | Vergennes
nora@lostlanternwhiskey.com | lostlanternwhiskey.com

Lost Lantern is an award-winning independent bottler. We find unique and exciting whiskeys from every corner of the United States. And we tell the stories of these distilleries and why whiskey lovers should know about what they're doing.

PRODUCTS: Whiskey

AVAILABLE: 802 Spirit Stores

233. lu.lu Artisan Ice Cream

Laura Mack | 185 Main Street | Vergennes
info@luluvt.com | luluvt.com

We are obsessed with making small-batch ice cream packed with big flavor. Every flavor is made from scratch using the best local ingredients; no preservatives, mixes, or shortcuts. We even pasteurize in-house being true to our farm-to-spoon mission.

PRODUCTS: Ice cream

AVAILABLE: City Market, in-store

SERVICES: Dairy processing, CSA, community events

234. Shacksbury Cider



David Dolginow | 75 Meigs Road | Vergennes
802-458-0530 | cidershop@shacksbury.com | shacksbury.com

We make complex ciders that are always pushing forward, while never straying far from the natural beauty our home state is known for.

PRODUCTS: Cider

AVAILABLE: Middlebury Natural Foods Co-op, & Middlebury Discount Beverage, Hare and the Dog, ShireTown Marketplace

SERVICES: Co-packing



235. Treleven

Cheryl Mitchell | 164 Mitchell Drive | Vergennes
802-545-2278 | cheryl.w.mitchell@gmail.com
trelevenfarm.org

Treleven is a farm and forest setting with hay fields and large vegetable gardens that are mostly used as learning centers. A variety of educational activities take place on the farm.

PRODUCTS: Hay

AVAILABLE: Farm direct

SERVICES: Community events, educational programs, farm events, farm stays/B&Bs

236. Vermont Pure CBD



Jonathan Namanworth | 237 Main Street | Vergennes
802-897-5663 | info@vermontcbd.com | vermontpurecbd.com
CBD retail store

PRODUCTS: CBD tinctures, capsules, salve, roll on, dog treats, CBD honey, lotion, pet tincture, bath bombs, milk chocolate and dark chocolate, certified organic smokable flowers

AVAILABLE: Vermont Pure Essentials Store, Middlebury Natural Foods Co-op, website

237. Woodman Hill Orchard

Stephanie Lowe | 175 Plank Road | Vergennes

802-877-6686 | apples@woodmanhillorchard.com
woodmanhillorchard.com

U-pick apple orchard, unpasteurized cider, cider donuts. Use latest IPM (Integrated Pest Management) practices to manage our orchard. Our Farm Stand also sells pumpkins, gourds, maple syrup and honey produced by other local growers.

PRODUCTS: Apples, pears, peaches, baked goods, apple cider, jams and jellies, cider donuts

AVAILABLE: Farm stand, ACORN Food Hub (apple only)

SERVICES: Pre order available for (apples, donuts, baked goods, and cider), pick your own, field trips

Weybridge

238. Duclos and Thompson Farm

Lisa Thompson | 1026 Sheep Farm Road | Weybridge
802-545-2230

PRODUCTS: Pork, lamb, beef and turkeys, retail cuts

AVAILABLE: Farm stand

239. Ledge Hill Farm

Violet LaFountain | 58 LaFountain Lane | Weybridge
802-377-0452 | violet.lafountain802@gmail.com

PRODUCTS: Vegetable plants, fruits, jams, USDA inspected goat meat,

TWO BROTHERS TAVERN
RESTAURANT BAR

Celebrating Vermont's vibrant local food culture!

86 Main Street, Middlebury :: 802.388.0002 :: www.twobrotherstavern.com

HORSFORD
Gardens & Nursery

TREES, SHRUBS, PERENNIALS, ANNUALS • BOTANICAL GARDENS
ANTIQUE GREENHOUSES • LIVE ONLINE INVENTORY horsfordnursery.com

lu·lu
farm-to-spoon ice cream
+ goat milk gelato

made from scratch,
just for you!

@lululicecream.vt | luluvt.com
185 Main Street Vergennes, VT

voted best ice cream in Vermont



retail cuts, duck and chicken eggs, baked goods

AVAILABLE: Farm direct, Middlebury Farmers Market

240. Monument Farms

Robert James | 2107 James Road | Weybridge

802-545-2119 | monumentfarms.com

PRODUCTS: Milk, retail milk, bottled cream, half & half, chocolate milk

AVAILABLE: Retail store, stores in Addison, Franklin, Rutland and Chittenden Counties

241. Weybridge Farm

Phyllis Bowdish | 21 Denisville Lane | Weybridge

802-545-2446

PRODUCTS: Eggs, beef

AVAILABLE: Farm direct, Middlebury Natural Foods Co-op (eggs), Duclos and Thompson Farm Stand

Wells

242. Larson Farm and Creamery

Rich & Cynthia Larson | 661 South Street | Wells

802-645-1957 | larsonfarmvt@gmail.com | larsonfarmvt.com

Certified organic, certified grass fed, Raw A2, pasteurized cream-top



cow milk, all 'cow to cup', made from our own A2 cow's milk, plus our organic beef by the cut.

PRODUCTS: Milk, plain and maple yogurt, Italian gelato, beef

AVAILABLE: ACORN Food Hub, Middlebury Natural Foods Co-op, City Market, Healthy Living, other area stores, and farm stand

SERVICES: Farm tours by appointment, on-farm AirBnB, farm stays

Whiting

243. Corner OAKK Farm

Kevin Riley | 4467 Richville Rd | Whiting | 720-470-8843

kkriley19@gmail.com

A small family-operated market garden rooted in sustainable practices. Forging connections between farm, food, and the local community in a modern setting. Our fresh flowers and produce are grown with care within a closed-loop model.

PRODUCTS: Greens, herbs, beans, cucumber, tomatoes, onions, garlic, carrots, beets, peppers, squashes, broccoli, cabbage, radicchio, endive, and more! Cut flowers include sunflowers, zinnia, dahlias, sweet pea, asters, and snapdragons

AVAILABLE: Online market, farm direct

Bristol Farmers Market

farmers
artisans
food trucks
musicians
community

EVERY MONDAY

JUNE - SEPT

3:00 - 7:00 PM

BRISTOL TOWN GREEN

VERGENNES FARMERS MARKET

JUNE 12- OCT 9

THURSDAYS

Local Farmers
Fine Artisans
Delicious Foods
Excellent Music

3PM-7PM

VERGENNES CITY PARK

SHELburne FARMERS MARKET

2025 SEASON

MAY 17-OCT 12

SATURDAYS

Local Farmers
Fine Artisans
Delicious Foods
Excellent Music

9AM-1PM

SHELburne PARADE GROUND

SBPA

SHELburne BUSINESS & PROFESSIONAL ASSOCIATION



★ ★ ★ ★ 13TH ANNUAL ★ ★ ★ ★

VERMONT CHEESEMAKERS FESTIVAL

SUNDAY
AUG 10TH
2025

SHELBURNE FARMS
SHELBURNE VERMONT

TICKETS AT [VTCHEESE.COM/FESTIVAL](https://vtcheese.com/festival)

LEADING THE WAY

The journey to a healthier, stronger Addison County cannot be traveled alone. Together, we can lead the way for a brighter future for everyone.

UnitedWayAddisonCounty.org

VERMONT CHEESE WEEK

SEP 6-SEP 13

dinners • classes • tastings & pairings • farm tours • retail & lodging

LEARN MORE AT [VTCHEESE.COM/CHEESEWEEK](https://vtcheese.com/cheeseweek)

Pick your own apples, handmade cider donuts, fresh pressed cider and more!

www.woodmanhillorchard.com • (802) 877-6686
175 Plank Rd., Vergennes, VT



University
of Vermont

Extension
College of Agriculture and Life Sciences

MIDDLEBURY

Serving Farm, Home & Community in Addison County for over 100 years

4-H Youth Beyond Ready

Reaching youth through life and job-skill development programs

Migrant Health and Education

Providing services and support

Vegetable and Berry

Providing technical assistance and conducting applied research with farmers

Champlain Valley Crops, Soil & Pasture

- On-farm research
- Improve soil health, forage and grain crops
- Improve grazing strategies
- Nutrient management plans for farms
- Water quality training
- Soil and manure testing and recommendations

23 Pond Ln., Ste. 300, Middlebury, VT 05753

802-656-7540

<https://www.uvm.edu/extension>

Issued in furtherance of Cooperative Extension work, Acts of May 8 and June 30, 1914, in cooperation with the United States Department of Agriculture, University of Vermont Extension, Burlington, Vermont. University of Vermont Extension, and U.S. Department of Agriculture, cooperating, offer education and employment to everyone without regard to race, color, national origin, gender, religion, age, disability, political beliefs, sexual orientation, and marital or familial status. Any reference to commercial products, trade names, or brand names is for information only, and no endorsement or approval is intended.



ACORN Food Hub offers variety and ease for buyers

BY MARIN HOWELL, CHRISTY LYNN
AND JOHN MCCRIGHT, ADDISON INDEPENDENT

The ACORN Food Hub connects local farmers and growers with the people and institutions who buy and eat their products. It's a warehouse on Exchange Street in Middlebury — where food is collected, stored and delivered — and an online market, where food purchasers can find and buy local food.

It helps small, local producers find new markets, and it gets fresh products to buyers fast so they have maximum shelf life and optimal quality. This puts promotes farm viability contributing to a vibrant local economy, and it puts the best foods into local mouths.

**"It's a no brainer...
It allows us to access
a much wider range
of products and from
producers, farmers
who are still local but
just logistically we
can't get to them and
they can't get to us."**

— Keith Drinkwine

"We really connect to the local farms," said Jessica Purks, the Food Hub's operations & logistics manager. "We tell the farm's story, we provide context and photos of each farm."

The Online Market is for anyone who wants to buy in bulk — restaurants, retailers, groceries, caterers, schools, farmstands, and community members. In 2024, half of the buyers at the Food Hub were retailers, including general stores and farmstands.

"It's been working great with seasonal farmstands," Purks

said. "They're famers, they get it."

At Starksboro's Flatlander Farm, Lisa Burritt Drinkwine and Keith Drinkwine buy produce and other goods from the ACORN Food Hub to stock their farmstand.

"It's a no brainer; just having the one spot to source from allows us to see and source more products than we'd be able to on our own," Keith said. "It allows us to access a much wider range of products and from producers, farmers who are still local but just logistically we can't get to them and they can't get to us."

The pair also purchases items for their family. Keith said the hub offers a convenient way to access things like bulk produce and dried herb mixes that pair well with the chicken and geese Flatlander Farm raises.

Perks said ACORN is excited that schools are showing up at the Food Hub.

And it's nice to see that community members have grown to a steady 25% of Food Hub sales, she added. Because the Hub



Lisa and Keith Drinkwine buy in bulk from ACORN Food Hub for their Flatlander Farm farmstand in Starksboro. They say it enables them to stock a wider array of foods.

sells in bulk, it is not geared for a single family. But groups of families can come together and self-organize a bulk buying club (that's already happening), or a family can buy in bulk for a special event.

But for some, like Barbara Saylor Rodgers, it offers an opportunity to split out a portion and offer it to those in need.

Rodgers buys food from the Food Hub not just for her family, but to help stock the food pantry at the Congregational Church in New Haven as part of the monthly "meat and more" events. "I choose to buy as much food as possible from local farmers and opt for organic whenever I can," Rodgers said. "If I choose to do that for myself, then I'm going to make the same choices about the food I buy for the food shelf — why should I change my standard for anyone else?"

Rodgers typically places orders monthly. She says ACORN posts what's available on Friday mornings. She'll log in and place her order for pickup in Middlebury on Wednesday.

Rodgers has a root cellar that functions to store produce and helps extend the shelf life enough to make it possible to work through her family's portion of the orders each month. She drops deliveries at the church for the Food Hub and often ends up packing their refrigerator with fresh, local vegetables.

"Usually it's too much for our family to eat on our own, but that's part of what makes this program perfect for charity," she says.



ACORN

Addison County Relocalization Network



2025 UPDATE

We opened the ACORN Food Hub on Exchange Street in the fall of 2022. With our refrigerated delivery van, branded t-shirts, and Vermont Public ads, our fledgling hub has taken flight as we enter our third year of operations.

A natural extension of ACORN's mission, the Food Hub offers a wholesale market, storage, trucking and even parties for farmers. Our work provides essential services and connections for our local food producers (and your neighbors!) to thrive.

Local food flows from farmers' fields into our centralized facility and out to customers near and far. Since opening, we've supported the flow of food from Addison, Chittenden, Orange and Rutland Counties into New York, New Hampshire, Massachusetts and throughout Vermont. We serve buyers who are looking to source local food more easily; restaurants, retailers, schools, and community members are all encouraged to get in touch with us.

"TO THOSE WHO HAVE SUPPORTED US, PARTNERED WITH US, OR SPREAD THE WORD OF THE FOOD HUB, THANK YOU!" - ACORN FOOD HUB TEAM

THE ACORN ONLINE MARKET

89%

OF SALES RETURN
TO OUR FARMERS!

620+

DIVERSE FOOD
PRODUCTS

DAIRY AND
VEGGIES ARE THE
MOST POPULAR
PRODUCTS ON
THE MARKET!

**WE'RE BUILDING A MORE
VIBRANT & NOURISHED
COMMUNITY THROUGH
LOCAL FOOD!**

OUR BULK & WHOLESALE LOCAL FOODS MARKET

50+ VENDORS SELLING ON THE MARKET!
ACROSS 14 PRODUCT CATEGORIES!

THESE FARMS FEED KIDS!

4 SCHOOL
DISTRICTS

PURCHASING LOCAL

ORGANIC VEGGIES

DAIRY & MEAT

BAKED GOODS

FRUIT & FERMENTS

SPECIALTY FOODS

GRAINS & MORE!

LOCAL FOOD FOR ALL!

**RESTAURANTS
SCHOOLS
RETAILERS
FAMILIES
FARMS
& YOU!**



SCAN ME

MARKET@ACORNVT.ORG
ACORNVT.ORG/FOODHUB

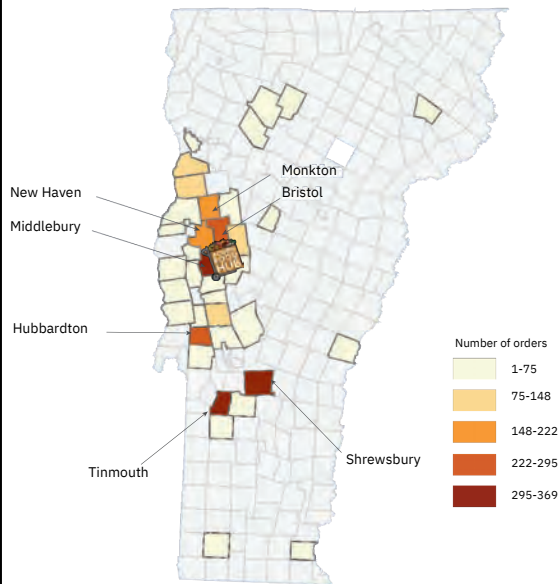


NOURISHING VERMONT: VISUALIZING THE IMPACT OF THE ACORN FOOD HUB



These maps are based on the ACORN Food Hub's order data from January to December 2024, showing the reach of the Food Hub across Vermont over the course of a year.

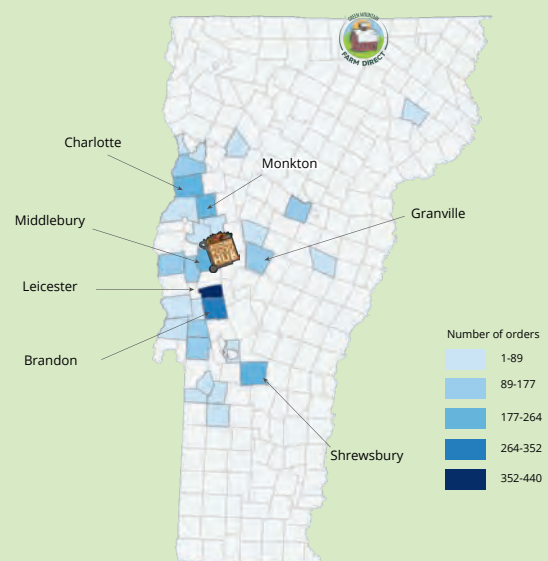
Geographic Distribution of ACORN Food Hub **Customers** Across Vermont



While customers are spread throughout the state, the highest concentrations are in towns located closest to the Food Hub. These customers are restaurants, schools, retailers and community members. Additionally, farms from Addison, Chittenden and Rutland Counties are supplementing their farm stands by offering products from other farms. Residents in towns with limited access to large grocery stores are benefited by this service. By operating as a distribution hub, ACORN helps bridge a gap, bringing fresh, locally sourced food to rural communities across Vermont.

Geographic Distribution of ACORN Food Hub **Producers** Across Vermont

Most producers selling through the Food Hub are based in the Champlain Valley, but others are connected via other food hubs which are part of the Vermont Food Hub Collaborative. This network of hubs allows food producers to connect with a broader customer base while also increasing the variety of products available regionally. This distribution system provides farms in more remote areas with increased market access, allowing them to sell their products beyond their own communities. This food hub network not only supports the local economy, ensuring more food dollars circulate locally, it also reduces the carbon footprint of "food miles" produced by food transportation.





Sea Buckthorn, Sunchoke and Willow are examples of perennials that can be used for land management and agroforestry.

Perennials for a Changing Climate

BY ALICIA HUGHART, ACORN ECO AMERICORPS SERVICE MEMBER, 2024-2025

In the wake of wet summers, and a rapidly evolving agricultural landscape, our community is looking ahead for solutions to safeguard our farming future. Between 2011 and 2024, Vermont

reported 25 Major Disaster Declarations, placing the state among the top five states in the country for such occurrences. In the last five years alone, we have faced an unpredictable late May freeze, damaging winter storms, and two major summer flood events, leaving Vermont's growers faced with the threat of losing their homes and livelihoods.

As these challenges become more prevalent, many within our community are reevaluating their planting strategies, turning to perennials to assist in preserving both their crops and our

(See Perennials, page 64)

Lincoln Peak Vineyard is home to eight acres of vines, a small winery, and a charming tasting room. Located just north of Middlebury and right off Route 7, the vineyard is the best place to experience our sustainably farmed, terroir-driven wines.

We offer flights and glasses paired with local charcuterie and snacks to enjoy on our serene porch overlooking the vineyard. Scan the QR code to learn more about us and see this year's calendar of live music, wine release parties, and art openings.

Check us out!

lincolnpeakvineyard.com



Local food and farms make all of our communities *stronger & healthier.*

As a local, independent bank, we are proud to support our local food producers.



 **National Bank of Middlebury**
Serving Vermont Communities Since 1831

EOE FDIC 
NMLS# 403372
nbmvt.com • 877-508-8455



LAKEVIEW ORGANIC GRAIN

1343 Nutt Road, Penn Yan, NY 14527
315-531-1038 | mh@lakevieworganicgrain.com

for Northeast Organic Farmers... from Northeast Organic Farmers
Organic Seed and Grain



Shelburne Farms FARM STORE

Your purchase supports our mission to inspire and cultivate learning for a sustainable future.

Farmstead cheddar, maple syrup, pasture-raised meats and eggs, organic produce, fresh O Bread & more!


farmstore.shelburnefarms.org
1611 Harbor Road, Shelburne, VT



It all starts with healthy soil.

Vermont Organic farms strengthen the health of our ecosystems, from field to plate.



LOOK FOR THE SEAL! 



Digger's Mirth Collective Farm in Burlington



Perennials continued from page 62

environment.

Vermont farms and nurseries are adapting their practices to growing and cultivating plants that are better suited to the state's unpredictable weather patterns. Last Minute Farm, a willow and cannabis farm in Weybridge, has adopted a strategic approach to their land management. Last Minute places native willow plants strategically where water frequently settles, due to willow's ability to absorb large amounts of water. Once the plants are rooted, the soil structure becomes less disturbed, reducing soil compaction and allowing for quicker absorption. By protecting sensitive parcels from the risk of runoff, the farm can further diversify with rows of beautiful willow varieties which they then sell to farms, retailers and florists.

One of Last Minute's customers, Misty Hollow Farm in Cornwall, has embraced the use of willow to implement their own land management system. The flower farm, specializing in dahlias and other fresh cut annuals, will be using the willow to assist in flood prevention and establish windbreaks around their flower field on the top of a hill, preventing wind damage to their fields of flowers. Including woody plants (trees, shrubs and vines that develop hard, woody stems and live more than two years) in field planning not only protects the flowers, but it also allows for an extended sale season for the farm, and provides the perfect wreath bases for dried floral projects come winter.

James Landenberger at Taproot Nursery, in Weybridge, has placed sustainability at the core of their mission, aiming to reduce soil disturbance and tillage, ensuring that the land remains healthy and rich for future generations. Utilizing agroforestry-based practices such as integrating trees and perennials throughout the landscape to encourage biodiversity and sustainability, Landenberger is looking to mimic natural forest ecosystems, allowing both plants and wildlife to thrive. By growing perennials including chestnuts, hackberry, hybrid hazelnuts, and seaberry, Taproot is increasing the health of their land by nurturing an environment that reduces erosion, damaged soil structure, and loss of organic matter.

Taproot starts their trees from seed, both from their own open-pollinated trees as well as sourcing from other nurseries. They have found this practice brings them much more gratification



James Landenberger, and his son Henry, tend plants at their home-farm, Taproot Nursery, in Weybridge.

than the cloning process which is traditionally used to increase stock. These methods provide an opportunity for their trees to share traits with a popular parent tree while also encouraging genetic diversification, resulting in trees that are more capable of adapting to Vermont's climate and are more resilient to potential threats, such as fungal diseases.

The importance of supporting local growers and promoting native perennial plants cannot be overstated. As Landenberger aptly put it, "Wouldn't it be great if we all dedicated one raised bed, garden row, or patch of lawn to trees and perennials that will outlive us and provide countless benefits for us, the soil, local wildlife, and our environment?"

Now is our time to protect the land that sustains us by adapting our planting decisions for a healthier, more sustainable, long-term agricultural system.

ADDISON COUNTY
Chamber of Commerce

VISIT US www.AddisonCounty.com 49 Park Lane Ferrisburgh, VT

WE OFFER

- Marketing Support
- Education
- Networking
- Growth
- Advocacy

HARE AND THE DOG

WINE · BEER · SPIRITS

211 Main Street
Vergennes, VT
(802) 877-6312

260 Court Street, Suite 3
Middlebury, VT
(802) 458-8060

TWO GREAT LOCATIONS!

www.Hare.dog



Addison County Farmacy: Food is Medicine

In 2024, Farmacy served **100 families** with **20,000 pounds** of locally grown organic produce and produced products

- For 15 weeks in the summer, participants are provided a share of 9 unique fruits and vegetables.
- During the 7 months of winter and spring, participants receive monthly shares with 4 vegetables and 2 sources of protein.
- Alongside each share, members receive a newsletter, recipe samples, and during the summer additional gleaned local produce.
- Farmacy families are enrolled via referral from Porter Medical Center, HOPE, WIC, YouFirst, Village Health, or word of mouth.

IN THE WORDS OF OUR PARTICIPANTS...



“This gift of a program, is **magic!** There is a sense of **community, inclusion** and almost a **festive** environment where it’s not a handout, it’s a sharing of the **wonderous food** that the land and the farmers supply to us.”

PRE AND POST PROGRAM SURVEYS REVEAL...

- ✓ **87%** of participants reported an **increase in fruit and vegetable consumption** through the program.
- ✓ **85%** of participants reported that the program **benefited their health**.
- ✓ **82%** of participants felt **very confident** preparing a meal using fresh fruits and vegetables after the program.

Contact: Lindsey Berk, Executive Director, lindsey@acornvt.org, 802-382-0401
www.acornvt.org

Thanks to your support,
MIDDLEBURY NATURAL FOODS CO-OP
generated over
\$7.8 million
in sales from local growers
and producers in FY 2024

MIDDLEBURY NATURAL FOODS CO-OP
9 Washington St | middlebury.coop | 8:00-7:00 Daily

MIDDLEBURY NATURAL FOODS CO-OP
Natural Foods Café



Healthy, local food for all

Access to fresh, local produce should be a right, and many organizations in the Champlain Valley work hard to put fresh food on every table. Whether we're food shelf customers or donors, we can all help our community feed itself.

HOPE continues the county's gleaning program, or the practice of collecting leftover crops from farmers' fields after they have harvested what they will sell elsewhere. Those who want to sign up to glean should contact HOPE at 388-3608.

Community Meals

Serving all of Addison County unless otherwise noted

Age Well - Age 60+ Meals

Various locations and dates across the county.

Call Michelle Eastman to enquire

802-377-1419, michelle@agewellvt.org

The Giving Fridge

A non-profit organization dedicated to making nutritious, locally sourced and prepared meals accessible to all. Vermont's Giving Fridge serves families and individuals in Addison County experiencing health and financial hardship.

51 Main St., Middlebury

For more information visit givingfridge.org, 800 642 5119

Middlebury Community Lunches

Charter House, 27 North Pleasant Street

Year round | 6 Days/wk 11:45 a.m.-12:15 p.m.

Pick up on side porch

Middlebury Community Suppers

Congregational Church | 2 Main Street | 388-7634

We welcome you to sit down and enjoy dinner. We also offer pick up on the Main St. and Seymour St. sides of the church.

Year Round Fridays 5:00-6:00 p.m.



Food Shelves

Serving all of Addison County unless otherwise noted

Have a Heart Food Shelf

20 West St., Bristol

3rd or 4th Friday of the month: 5-6 p.m.

Watch for signs 20 West St, Shaws, Bristol Redemption

Serves Bristol, Lincoln, Monkton, New Haven & Starksboro.

If someone has an immediate need, call 802-233-3561 Allison Pouliot.

Addison County Food Shelf HOPE

282 Boardman Street, Middlebury | 802-388-3608

Food Shelf: M-F: 9 a.m.-3 p.m.

Addison County Community Action Food Shelf

616 Exchange St. Middlebury | 802-377-3741

M-F: 10 a.m.-3:30 p.m., with no midday closure.

Income eligibility requirements; Distributes USDA commodities.

New Haven Congregational Church Closet

91 Town Hill Rd. New Haven | Deb Taylor: 802-989-5224

"Closet" Open 24/7 Outside, behind the church

Meat and More Giveaway

2nd Saturday each month, 11 a.m.-1 p.m.

John W. Graham Shelter Food Shelf

69 Main Street, Vergennes | 802-877-2677

Monday-Friday 9 a.m.-4 p.m.

Starksboro Food Shelf

3056 Route 116, Starksboro

Barbara Herrington: 802-453-6775 | bherrington766@gmail.com

2nd Wednesday of the month. All residents of Starksboro are welcome.

New Community Project Food Share Program

2806 Rt. 116, Starksboro First Baptist Church

Every Sunday, 2:30-3 p.m. Try to arrive by 2:20 p.m.

Questions: contact Peter, 802-434-2333

Vergennes Community Food Shelf

30 South Water Street, Vergennes | 802-877-2435

T & Th: 2-4 p.m.

Serves towns of Vergennes, Panton, Ferrisburgh, North Ferrisburgh, New Haven, Waltham & Addison. Access twice per month.

Victory Baptist Church Food Shelf

862 US Route 7, Vergennes | 802-877-3393

M-W and Friday: 8:30 a.m.-5 p.m.

Serves towns of Vergennes, Panton, Ferrisburgh, North Ferrisburgh, New Haven, Waltham and Addison.

Whiting Community Cupboard

Whiting Community Church | North Main Street (Rte 30), Whiting

Melissa O'Neill: 802-289-1575

Mondays: 8:30-9 a.m. All are welcome.



LITTLE VILLAGE ACRES

Middlebury, VT



Food for Hope™

**Growing and
processing food
for area
food shelves.**

LittleVillageAcres.com



**SUNDIAL
SOLAR**

CONVERTING TO
SOLAR POWER IS

**CLEAN.
SIMPLE.
SMART.**



We Offer:

- Solar
- Batteries
- Geothermal
- Heat pumps

www.SundialSolarNH.com

802-GO-SOLAR
(467-6527)



FARMERS MARKET GUIDE

MONDAYS

Bristol Farmers Market
June 7 - Sep. 29, 3:00 - 7:00 p.m.
Town Green
director@bristolcore.org

WEDNESDAYS

Farmers Market of Addison County
June- Oct., 1:30 - 6:00 p.m.
Middlebury Green, By the Fountain
802-349-4279

THURSDAYS

Vergennes Farmers Market
June 12 - Oct. 9, 3:00 - 6:30 p.m.
Vergennes Green/Park
Sarah Stillman
vergennesfm@gmail.com

FRIDAYS

Brandon Farmers Market
June - early Oct., 9:30 a.m.- 2:30 p.m.
Central Park
Wendy Cijka | 802-273-2655
cijka4@gmail.com
brandonfarmersmarketvt.com

Richmond Farmers Market
May 30 - Oct. 17, 3:00 p.m. - 6:30 p.m.
Volunteers Green, 200 Bridge St.
rffmmanager@gmail.com
richmond-farmers-market.square.site/
Accepts EBT and Debit Cards

SATURDAYS

Shelburne Farmers Market
May 17 - Oct. 18
9:00 a.m.- 1:00 p.m.
Shelburne Village Green, Fairgrounds
shelburnefarmersmarketvt@gmail.com
sbpavt.org/the-market

Vermont Farmers Market, Rutland
May 17 - Oct. 18
9:00 a.m. - 1:00 p.m.
Depot Park (**outdoor**)
Nov. 4 - May 10
10:00 a.m. - 2:00 p.m.
251 West St., VFFC (**indoor**)
Ann Finley | 802-747-8264
vfmrutland@gmail.com |
vtfarmersmarket.org

Middlebury Farmers Market
May - Oct. 2
9:00 a.m. - 12:30 p.m.
VFW Parking Lot (**outdoor**)
530 Exchange St.
Nov. - April
9 a.m. - 12:30 p.m.
VFW (**indoor**) | 530 Exchange St.
middleburyfarmersmarket.org
middleburyfarmersmkt@yahoo.com
Accepts EBT and Debit Cards

Burlington Farmers Market
May 10 - Oct. 2
9:00 a.m. - 2:00 p.m.
345 Pine St.
burlingtonfarmersmarket.org
(802) 560-5904
Accepts EBT and Debit Cards






**Pleasant Mount Farm
Huntington Center**
34th season


Plan your garden & fill it with our healthy, beautiful plants.

Helpful, knowledgeable service!
Convenient & customer-friendly.

**Specializing in fun,
interesting vegetable plants**
Unusual, heirlooms, favorites

In the spring, at the end of the day, you should smell like dirt.
— Margaret Atwood

www.pleasantmountfarm.com



THE HOLT Restaurant

11 Main St, Suite A100, Vergennes, VT 05491
(802) 877-2400
Open: Fri - Tues | www.theholtut.com



Vermont Economic Development Authority
Financing for Businesses, Farms and Renewable Energy



www.VEDA.org | Montpelier-Burlington-Middlebury | 802-828-5627

Did you know you can host your special event at the fair?



Addison County Fair & Field Days
offers space rentals for
weddings, family reunions
and other special events.

We promise an affordable, memorable setting with widely customizable options.



addisoncountyfielddays.com/weddings/

If interested please call Katie
at 802-545-2557 or
email fielddays@gmavt.net!



COME CHECK OUT OUR CIDERY!

Located just off scenic Route 7 in Middlebury, Vermont, the Cider House and Tap Room welcomes visitors with self-guided tours, tastings, gear, and 20 ciders on tap. We think there's nothing better than swapping stories with family and friends over a pint at the Cidery.

The Cidery: 1321 Exchange Street, Middlebury, VT 05753




Monday & Tuesday: Closed
Wednesday & Thursday: 12 - 6 PM
Friday & Saturday: 12 - 7 PM
Sunday: 12 - 5 PM

Check out Woodchuck.com/Ciderhouse for seasonal hours & special events

©2025 Woodchuck Cidery 1321 Exchange St, Middlebury, VT 05753. Revel Responsibly®   



Index of Products

MEAT

ALPACA20, 205
BEEF1, 4, 6, 9, 10, 13, 17, 20, 33, 42, 46, 48, 63, 66, 80, 91, 106, 108, 109, 127, 145, 146, 147, 150, 154, 155, 161, 162, 163, 165, 175, 176, 181, 185, 187, 188, 190, 196, 197, 198, 201, 206, 220, 238, 241, 242, 245
GOAT6, 98, 119, 143, 154, 188, 212, 239
LAMB9, 23, 33, 46, 47, 49, 50, 57, 73, 80, 86, 91, 98, 109, 129, 147, 150, 154, 161, 167, 188, 190, 200, 201, 204, 205, 206, 208, 238
MUTTON ...49, 50, 205
PORK9, 12, 33, 42, 46, 47, 80, 85, 91, 108, 135, 146, 147, 150, 154, 162, 169, 175, 176, 181, 185, 238, 245
POULTRY ...9, 12, 33, 42, 46, 47, 48, 76, 85, 86, 91, 98, 135, 145, 149, 150, 162, 164, 169, 176, 181, 187, 188, 206, 212, 232, 238
RABBIT6, 145
VEAL246
VENISON ...122, 135

FRUIT

APPLES5, 33, 47, 67, 70, 79, 90, 91, 121, 132, 136, 162, 195, 202, 225, 237, 245
BLACKBERRIES38, 47, 60, 126, 134, 193, 195, 245
BLUEBERRIES18, 36, 43, 45, 55, 60, 70, 133, 134, 137, 182, 183, 193, 201
CHERRIES ..56, 195
CURRENTS15, 126, 134, 153, 183, 195
GRAPES15, 20, 193
MELONS18, 43, 47, 78, 79, 81, 87, 126, 129, 217, 226, 227
PEACHES ...5, 18, 33, 47, 56, 60, 90, 121, 124, 136, 137, 140, 143, 195, 198, 202, 237
PEARS43, 47, 70, 126, 129, 135, 140, 143, 165, 198, 237
PLUMS47, 56, 60, 70, 90, 126, 132, 137, 153, 195
RASPBERRIES18, 31, 38, 43, 47, 76, 78, 124, 126, 133, 134, 137, 182, 183, 193, 195, 202, 245
RHUBARB14, 76, 91, 146
STRAWBERRIES18, 31, 43, 47, 60, 76, 77, 86, 124, 126, 133, 134, 137, 202, 215

VEGETABLES, HERBS, FLOWERS

VEGETABLES2, 7, 12, 18, 27, 28, 31, 47, 51, 59, 60, 61, 64, 76, 77, 83, 84, 85, 86, 87, 89, 91, 92, 96, 98, 105, 118, 121, 124, 133, 134, 137, 139, 142, 146, 153, 162, 163, 169, 179, 183, 185, 187, 188, 199, 205, 213, 215, 219, 225, 226, 229, 235, 239, 243, 244, 245
SWEET CORN2, 11, 18, 47, 78, 79, 118, 133, 134, 135, 147, 151, 155, 202, 219, 245
HERBS2, 7, 12, 18, 27, 31, 47, 51, 60, 61, 64, 76, 77, 85, 87, 89, 91, 96, 110, 112, 118, 119, 124, 134, 137, 142, 146, 153, 162, 165, 179, 183, 186, 187, 188, 193, 199, 212, 215, 226, 227, 243
FLOWERS2, 16, 18, 25, 26, 27, 32, 36, 43, 47, 51, 59, 61, 64, 75, 76, 85, 87, 88, 91, 95, 102, 118, 133, 134, 136, 137, 142, 144, 146, 151, 155, 162, 175, 178, 179, 180, 183, 186, 187, 188, 199, 204, 205, 208, 212, 215, 225, 231, 243, 245
CBD & HEMP2, 75, 85, 95, 174, 180, 225, 236

GRAINS

GRAIN54, 114, 130
RICE230

PLANTS AND TREES

CHRISTMAS TREES97, 124, 129, 135, 202, 219
COMPOST2, 128, 199, 245
HAY1, 2, 17, 52, 66, 81, 106, 111, 132, 137, 138, 168, 235, 244, 245
FIREWOOD153
PLANTS AND STARTS ...2, 7, 12, 18, 25, 27, 51, 53, 77, 87, 91, 96, 119, 133, 142, 144, 153, 162, 179, 186, 215, 227, 239, 245
TREES53, 131, 144, 153, 227, 228
WREATHS AND BASKETS18, 51, 53, 102, 124, 129, 175, 202, 229, 231

EGGS & DAIRY

BUTTERMILK201
CHEESE5, 14, 19, 68, 70, 71, 81, 100, 116, 136, 158, 162, 190
EGGS9, 12, 14, 20, 22, 24, 42, 43, 47, 48, 74, 75, 76, 85, 86, 91, 95, 98, 104, 105, 119, 135, 145, 146, 147, 158, 161, 162, 168, 170, 175, 176, 183, 184, 187, 188, 190, 212, 215, 223, 225, 239, 241
GOAT DAIRY14, 68, 81, 100, 158, 166, 188
MILK1, 57, 159, 162, 240
RAW MILK3, 14, 81, 188, 242, 246
YOGURT14, 81, 242

HONEY & MAPLE

HONEY2, 11, 46, 47, 51, 62, 65, 71, 74, 82, 90, 108, 115, 117, 123, 129, 134, 135, 136, 141, 162, 182, 186, 208, 236, 237, 245
MAPLE2, 5, 21, 33, 35, 37, 44, 46, 62, 69, 71, 82, 89, 90, 93, 94, 97, 99, 102, 103, 107, 108, 111, 113, 123, 129, 134, 135, 140, 147, 155, 160, 162, 175, 181, 184, 190, 191, 195, 202, 211, 214, 216, 217, 218, 219, 221, 222, 224

SPECIALTY PRODUCTS

BAKED GOODS2, 5, 12, 70, 76, 91, 121, 130, 136, 169, 170, 195, 212, 229, 237, 239, 245
BEER, WINE, & SODA15, 34, 39, 45, 120, 132, 134, 148, 177, 192, 195
CIDER (HARD)5, 70, 132, 148, 192, 195, 234
CIDER (SWEET)5, 47, 67, 70, 90, 121, 132, 136, 195, 202, 224, 237
FLOUR54, 130
ICE CREAM, GELATO & SORBET43, 191, 193, 233, 242
JAMS & JELLIES2, 40, 43, 47, 55, 72, 76, 77, 86, 90, 91, 134, 136, 146, 153, 182, 183, 187, 212, 237, 239
MUSHROOMS12, 153, 157, 207
OILS & VINEGARS87, 91, 138
PICKLES & FERMENTS2, 72, 76, 77, 91, 134, 142, 169, 175, 187, 215
SOAP & BODY PRODUCTS14, 22, 48, 61, 76, 158, 171, 175, 186
TORTILLAS .194

ANIMAL PRODUCTS

FIBER20, 50, 74, 75, 98, 156, 167, 171, 205, 227
WOOL49, 50, 74, 75, 76, 91, 98, 109, 129, 167, 171, 227
PELTS20, 49, 50, 153, 157, 171, 204
FLEECE20, 49, 50, 145, 154, 167, 201
ROVING50, 74, 76, 129, 167

SERVICES

BREEDING17, 20, 23, 74, 98, 109, 143, 146, 166, 167, 200
CATERING70, 229
CSA16, 18, 31, 32, 51, 59, 60, 77, 83, 85, 88, 89, 102, 118, 175, 183, 185, 187, 212, 213, 215, 226, 229, 231, 233
EDUCATIONAL PROGRAMS...1, 11, 20, 27, 31, 41, 43, 53, 74, 100, 110, 117, 119, 127, 139, 153, 155, 167, 175, 185, 186, 187, 188, 190, 194, 220, 227, 235
COMMUNITY/FARM EVENTS18, 20, 27, 28, 34, 47, 62, 64, 74, 76, 81, 90, 91, 100, 137, 155, 158, 175, 186, 187, 192, 193, 227, 231, 233, 235, 245
FARM STAYS/B&BS6, 7, 15, 20, 68, 98, 100, 102, 104, 137, 159, 186, 235, 242
FLORAL SERVICES16, 18, 26, 51, 75, 76, 88, 137, 175
MEAT PROCESSING8, 80, 228
PICK-YOUR-OWN5, 18, 20, 33, 36, 43, 55, 60, 61, 67, 70, 78, 90, 118, 121, 124, 126, 132, 133, 134, 136, 137, 175, 182, 195, 215, 237, 245
EBT/SNAP/3SQUARESVT2, 18, 91, 134, 152
FARM STAND2, 5, 7, 18, 19, 24, 25, 27, 32, 33, 43, 47, 51, 57, 60, 61, 67, 70, 72, 75, 76, 78, 79, 81, 85, 86, 88, 89, 93, 95, 100, 102, 103, 107, 121, 124, 127, 133, 134, 135, 136, 138, 142, 146, 147, 151, 155, 162, 168, 170, 171, 172, 175, 178, 186, 187, 188, 190, 191, 193, 201, 202, 205, 208, 212, 214, 215, 227, 229, 231, 237, 238, 241, 242, 245, 246



OTTER CREEK YOGA


Classes for
Every Body

In person and on Zoom

...and home to the
Yoga Equity Project

Classes 7 Days a Week
in the Historic
Marble Works

Downtown Middlebury, VT
www.ottercreekyoga.com



Stone Leaf Teahouse

loose leaf tea importer, wholesaler
& full service Teahouse
in Middlebury, Vermont

Get your
fresh
greens

stoneleaftea.com




A2 YOGURT

Certified Organic
100% Grass-Fed

Unpasteurized 'Raw' milk
available at the farm in Wells.

Email about delivery.
LarsonsRaw@gmail.com

LarsonFarmVT.com Wells, VT



VT VINEYARDS

HELPING YOU GROW GRAPES IN VERMONT
802-734-6108 | VTVINEYARDS@GMAIL.COM



GILFEATHER'S

FINE PROVISIONS

Gilfeather's is a locally owned specialty food market featuring the savory and sweet creations of Chefs Rick and Nan Benson. Fine wines and craft beers fill the shop along with unique cheeses, charcuterie, mustards, jams, chocolates, conservas and many more distinctive items created by talented artisans from Vermont and beyond!

GREAT FOOD TO GO

WE'RE MOVING!
500 feet North on Route 7
Autumn 2025



3177 Route 7, Ferrisburgh, Vermont
(802) 870-7315

gilfeathersfineprovisions.com
facebook.com/gilfeathersfineprovisions

Church photograph courtesy of Rik Carlson

JAMCO